

ALDRIDGE ROAD VILLAS, W11
£625 PER WEEK (£2,708.33 PCM) FURNISHED

**A BRIGHT AND BEAUTIFULLY PRESENTED TWO BEDROOM
FLAT ON THE FIRST FLOOR OF THIS PERIOD BUILDING ON
THIS PRETTY TREE LINED STREET.**

Notting Hill Lettings | 0207 727 3227 | nottinghill@winkworth.co.uk

Winkworth

for every step...

winkworth.co.uk



DESCRIPTION:

The property comprises a separate fully fitted kitchen and reception room. A spacious master bedroom with bay window and plenty of storage. The property further comprises the second double bedroom which has built in storage and space for a desk along with a family bathroom. The property is available part furnished and viewings are highly recommended.

Utilities:

Electricity – Mains

Water – Mains

Sewerage – Mains

Heating – Gas

Broadband <https://checker.ofcom.org.uk/en-gb/broadband-coverage>

Mobile Coverage <https://checker.ofcom.org.uk/en-gb/mobile-coverage>

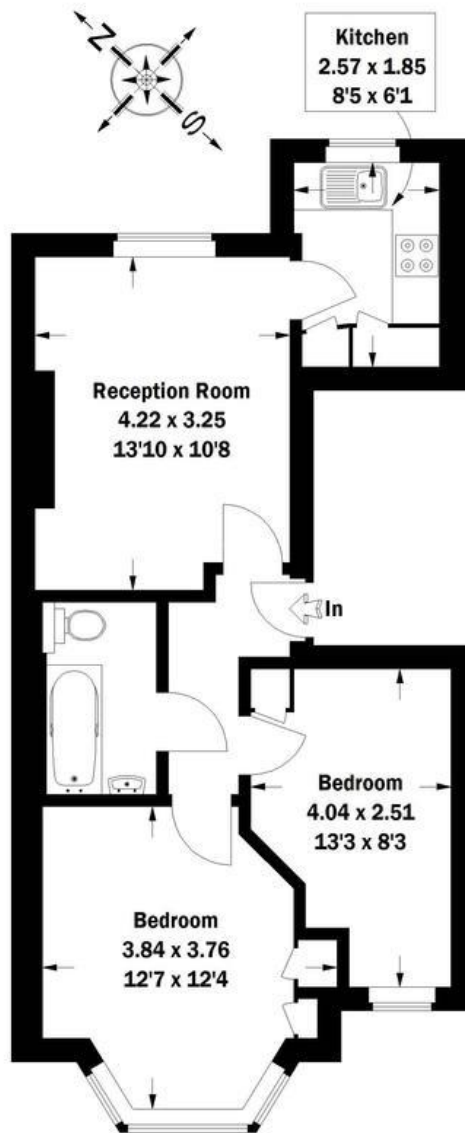
LOCATION:

Aldridge Road Villas is a peaceful, tree lined, residential street running north from Westbourne Park Road, a short walk from the shops and restaurants of Ledbury Road. Westbourne Park underground is just around the corner and Notting Hill Gate within easy walking distance.



Aldridge Road Villas, W11

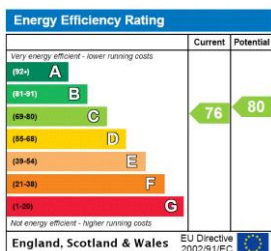
Approximate Gross Internal Area
47.4 sq m / 510 sq ft



First Floor

Whilst every effort has been made to ensure the accuracy of the floor plan, measurements are approximate and not to scale. No guarantee is given as to the total square footage of the property shown on the plan. Figures shown are for guidance. Plan is for illustration purposes only, not to be used for valuations.

This floorplan is for illustration purposes only and is not to scale. The position and size of doors, windows, appliances and other features are approximate.



Deposit: £3,125

Holding Deposit: £625

Council Tax Band: E (Westminster)

Where no figures are shown, we have been unable to ascertain the information. All figures that are shown were correct at the time of printing.

Winkworth

for every step...

Notting Hill Lettings | 0207 727 3227 | nottinghill@winkworth.co.uk

winkworth.co.uk

Winkworth wishes to inform prospective buyers and tenants that these particulars are a guide and act as information only. All our details are given in good faith and believed to be correct at the time of printing but they don't form part of an offer or contract. No Winkworth employee has authority to make or give any representation or warranty in relation to this property. All fixtures and fittings, whether fitted or not are deemed removable by the vendor unless stated otherwise and room sizes are measured between internal wall surfaces, including furnishings.