



**Alderney Street, SW1V**

**£2,750 PER MONTH**

**FURNISHED**

**AT A GLANCE**

- Two Double Bedrooms
- Study Room
- One Bathroom + Separate WC
- Large Reception
- Kitchen with breakfast bar
- Balcony
- Furnished

**Winkworth**

for every step...



Score	Energy rating	Current	Potential
92+	A		
81-91	B		
69-80	C		
55-68	D	65 D	72 C
39-54	E		
21-38	F		
1-20	G		

## ALDERNEY STREET, SW1V

£2,750 PER MONTH

FURNISHED

A charming two double bedroom plus study split level flat located in this purpose built block in the Pimlico Grid. This spacious property extends to almost 900 sq. ft. and is available to let on a furnished basis immediately. The property comprises of a large reception room with plenty of space to dine and entertain and access onto a private balcony, separate kitchen with breakfast bar, two double bedrooms with built in storage, a study room and family bathroom with separate WC.

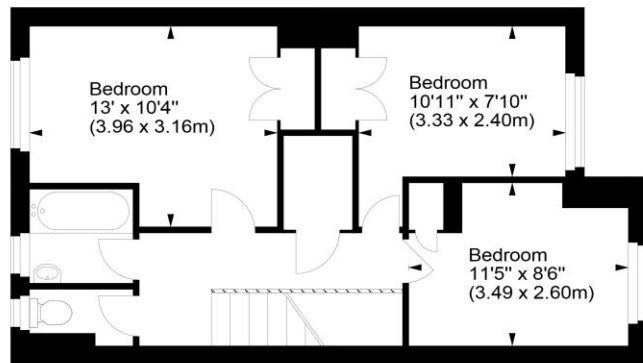
Dryburgh House is conveniently located within a short walk of Victoria and Sloane Square.



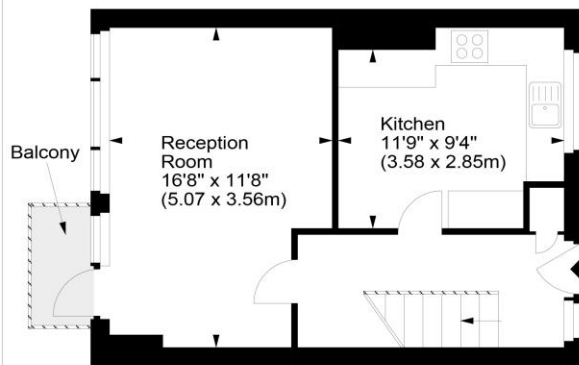
winkworth wishes to inform prospective buyers and tenants that these particulars are a guide and act as information only. All our details are given in good faith and believed to be correct at the time of printing but they don't form part of an offer or contract. No winkworth employee has authority to make or give any representation or warranty in relation to this property. All fixtures and fittings, whether fitted or not are deemed removable by the vendor unless stated otherwise and room sizes are measured between internal wall surfaces - including fire-chimneys.

## Dryburgh House, SW1

Approx. Gross Internal Area  
892 Sq Ft - 82.87 Sq M



Third Floor



Second Floor

For illustration purposes only. Not to scale.  
All measurements are taken and shown at floor level.  
www.r3photography.co.uk © Photography / Floor Plans / Lease Plans / EPCs

Winkworth

Pimlico & Westminster | 020 7828 1786 |  
pimlico@winkworth.co.uk

winkworth.co.uk/pimlico

Winkworth

for every step...