

SPRINGFIELD MOUNT, KINGSBURY, NW9
£740,000 FREEHOLD

4 BEDROOM SEMI DETACHED FAMILY HOME BEAUTIFUL BLANK CANVAS

Kingsbury | 020 8204 0000 | kingsbury@winkworth.co.uk

Winkworth

for every step...

winkworth.co.uk



DESCRIPTION: Nestled in the serene Springfield Mount, a sought-after residential area that strikes the perfect balance between POPULARITY and TRANQUILITY. Ideally located midway between the bustling KINGSBURY and EDGWARE ROAD (COLINDALE), this property offers a convenient lifestyle with an overabundance of transport links, shops, schools, and amenities just a stone's throw away. Spread over TWO LEVELS and tastefully decorated throughout, this meticulously maintained residence greets you with a SPACIOUS DOUBLE RECEPTION, a generously sized DOUBLE BEDROOM with fitted wardrobes, as well as a dining room, bathed in natural light. French doors connect this inviting space to a simplistic yet functional kitchen, allowing for easy indoor-outdoor living as it overlooks a well-sized and well-kept garden area. Moving upstairs, you'll find THREE generously sized bedrooms, A modern family bathroom offering both comfort and convenience for the family. Additional benefits to the property are the driveway providing off-street PARKING for TWO cars. The rear garden offers ample space for outdoor activities, gardening, or simply relaxing in your own green oasis. An internal viewing is strongly recommended to fully appreciate all that this wonderful home has to offer. Families will appreciate the proximity of reputable schools such as Oliver Goldsmith Primary School, The Village School, and Kingsbury Green Primary School, making the daily school run a breeze and ensuring that quality education is right on your doorstep.



for every step...



Winkworth
for every step...



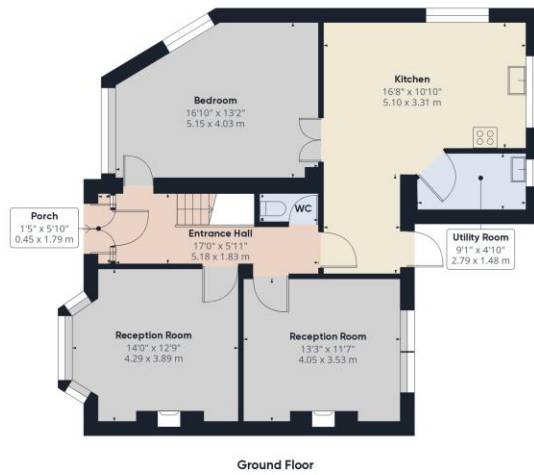
Winkworth
for every step...



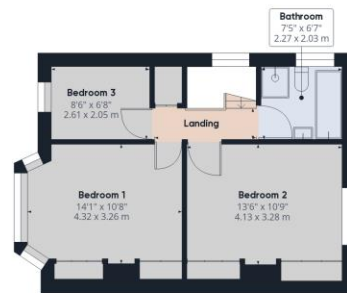
Winkworth
for every step...

Winkworth

for every step...



Ground Floor



Floor 1

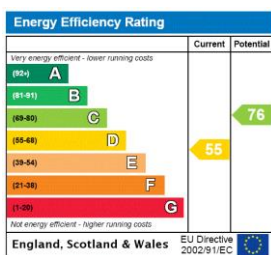
Approximate total area¹⁾
1395.76 ft²
129.67 m²

Excluding balconies and terraces

While every attempt has been made to ensure accuracy, all measurements are approximate, not to scale. This floor plan is for illustrative purposes only.

GIRAFFE360

This floorplan is for illustration purposes only and is not to scale. The position and size of doors, windows, appliances and other features are approximate.



Kingsbury | 020 8204 0000 | kingsbury@winkworth.co.uk

for every step...

winkworth.co.uk

Winkworth wishes to inform prospective buyers and tenants that these particulars are a guide and act as information only. All our details are given in good faith and believed to be correct at the time of printing but they don't form part of an offer or contract. No Winkworth employee has authority to make or give any representation or warranty in relation to this property. All fixtures and fittings, whether fitted or not are deemed removable by the vendor unless stated otherwise and room sizes are measured between internal wall surfaces, including furnishings.