



FLAT 3 SANDFORD
COURT
32 BELLE VUE ROAD
BOURNEMOUTH
BH6 3DR

SHARE OF FREEHOLD
ASKING PRICE
£315,000

“A two bedroom,
ground floor flat with
vacant possession just
130 metres to South-
bourne cliff tops and
750 metres to
Southbourne’s vibrant
high street”

Winkworth

for every step...

ASKING PRICE £315,000

Two Bedrooms

Ground Floor

Visitor Parking

130 Metres To Southbourne Cliff Tops

750 Metres To Southbourne High Street

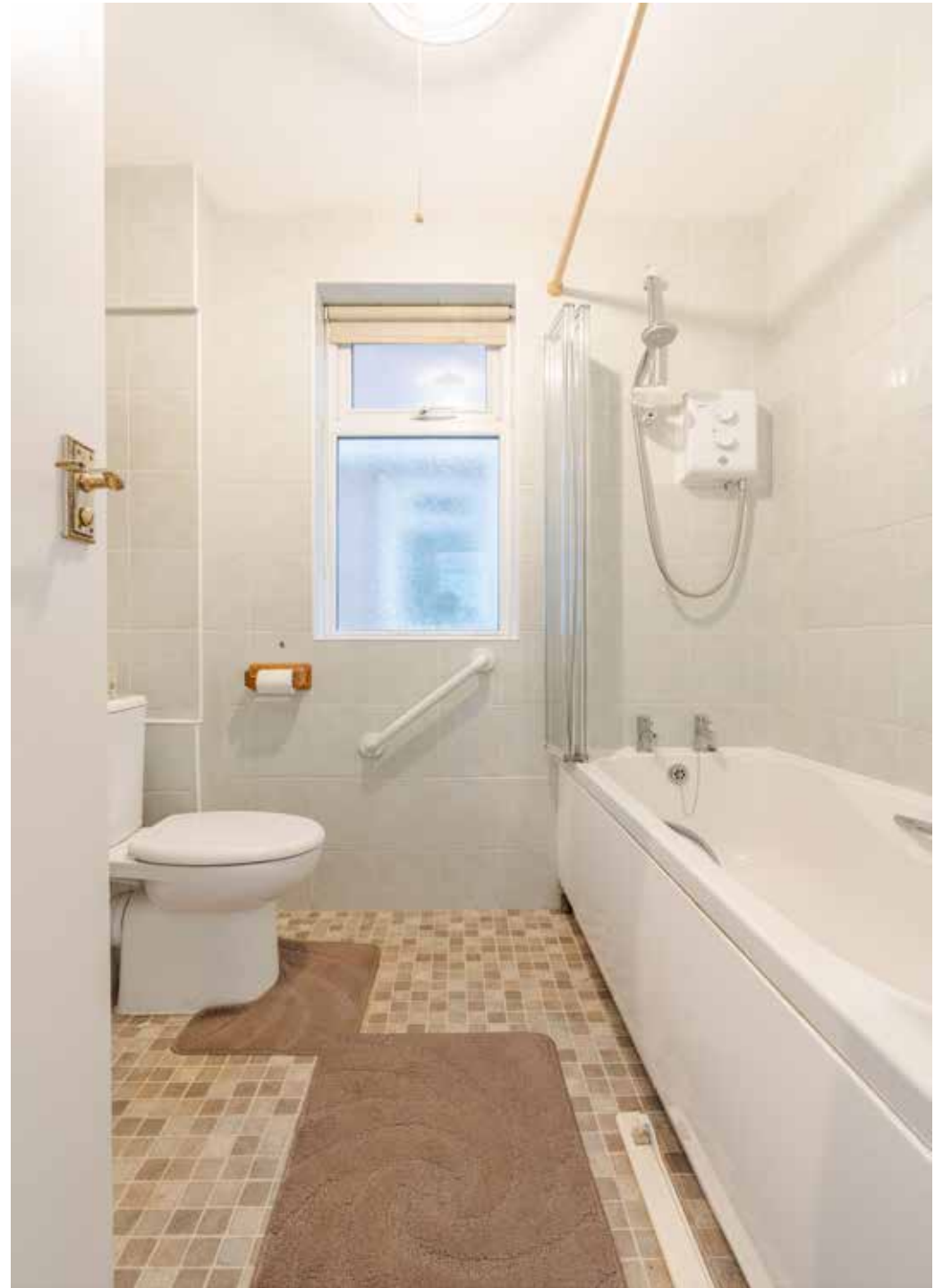
Vacant Possession

EPC: D | COUNCIL TAX: B | LEASEHOLD 101 YEARS REMAINING | MAINTENANCE £840 P/A | GROUND RENT N/A | NO PETS OR HOLIDAY LETS PERMITTED

01202 434365

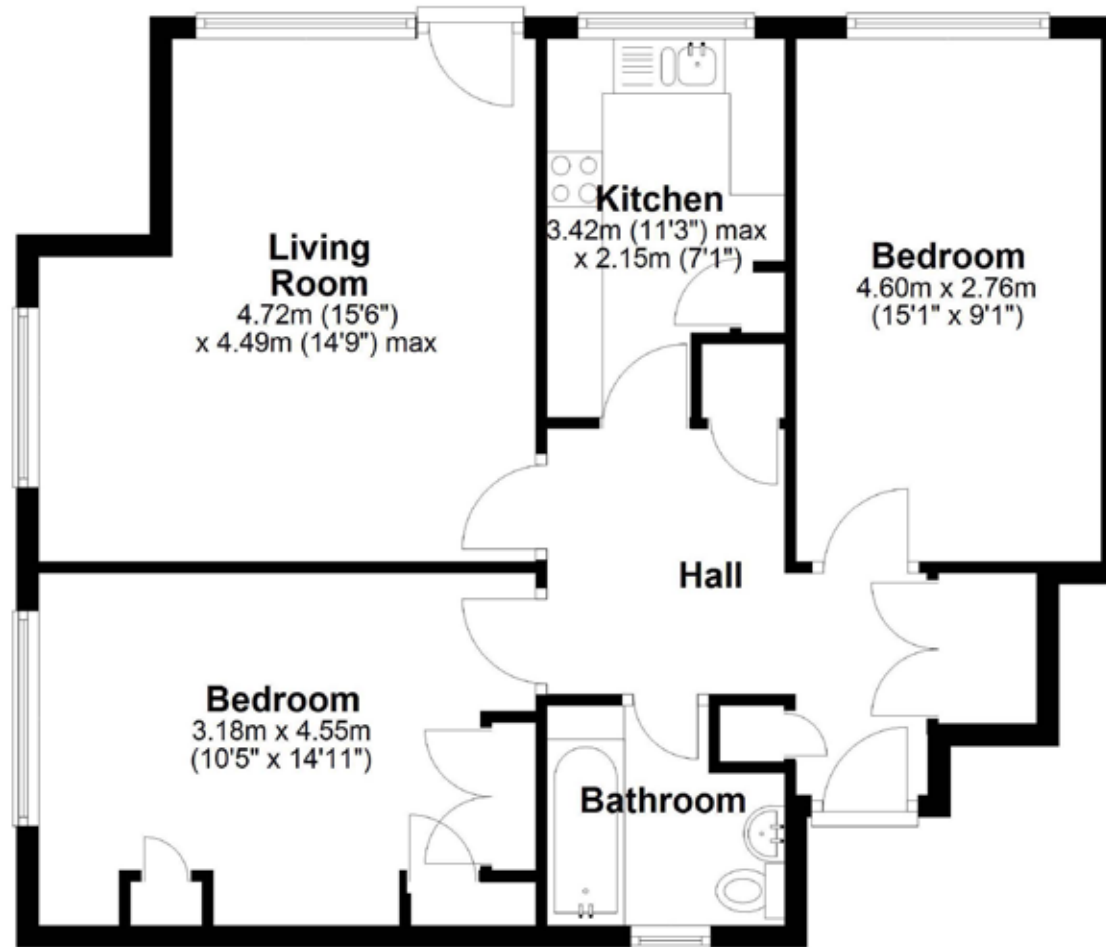
southbourne@winkworth.co.uk





Ground Floor

Approx. 69.2 sq. metres (744.4 sq. feet)



Bournemouth Energy Floor Plans are provided for illustration/identification purposes only. Not drawn to scale, unless stated and accept no responsibility for any error, omission or mis-statement. Dimensions shown are to the nearest 7.5 cm / 3 inches. Total approx area shown on the plan may include any external terraces, balconies and other external areas. To find out more about Bournemouth Energy please visit www.bournemouthenergy.co.uk (Tel: 01202 556006)
Plan produced using PlanUp.

DISCLAIMER:

Winkworth wishes to inform prospective buyers that these particulars are a guide and act as information only. All our details are given in good faith and believed to be correct at the time of issue but they do not form part of an offer or contract. No Winkworth employee has authority to make or give any representation or warranty in relation to this property. All fixtures and fittings, whether fitted or not are deemed removable by the vendor unless stated otherwise and room sizes are measured between internal wall surfaces, including furnishings.



Lori Leon

lleon@winkworth.co.uk
07918 932490
Winkworth Southbourne
29 Southbourne Grove,
Bournemouth, Dorset, BH6
3QT

01202 434365
southbourne@winkworth.co.uk
winkworth.co.uk/southbourne

“Before embarking on her career in agency, Lori was a golf professional for many years following a successful amateur career playing at both county and international level. She started in agency in 2004 and has always worked in Bournemouth and the surrounding areas.

While working at her previous agency, she met James where they forged a firm friendship. Their passion to change the way people perceive estate agents, led them to joining forces and purchasing the Winkworth Southbourne franchise together. Lori has always lived in Southbourne and is very passionate about the area. Her children Zak and Kitty attended the local St James primary school. Both her children are now adults so in her spare time she enjoys travelling and big family get togethers when her youngest is home from university.”

Winkworth

for every step...