



BATSON STREET, LONDON, W12

£950,000 FREEHOLD

A DELIGHTFUL THREE/FOUR BEDROOM VICTORIAN TERRACE IN THIS POPULAR LOCATION. THE PROPERTY COMPRISES A THROUGH RECEPTION WITH FRENCH DOORS WHICH OPEN ONTO A PRIVATE SOUTH FACING GARDEN AND A DISCREET GALLEY KITCHEN. ON THE FIRST FLOOR THERE ARE TWO DOUBLE BEDROOMS A STUDY AND A BATHROOM IN ADDITION TO WHICH THE LOFT SPACE HAS BEEN CONVERTED INTO A SUBSTANTIAL BEDROOM WITH AN ENSUITE SHOWER ROOM. ATTRACTIVE AND IN GENERALLY GOOD CONDITION THE PROPERTY FURTHER BENEFITS FROM NO ONWARD CHAIN

Shepherds Bush | 020 8735 3266 | shepherdsbush@winkworth.co.uk

Winkworth

for every step...

A member of  **OnTheMarket**.com

winkworth.co.uk/shepherds-bush



DESCRIPTION:

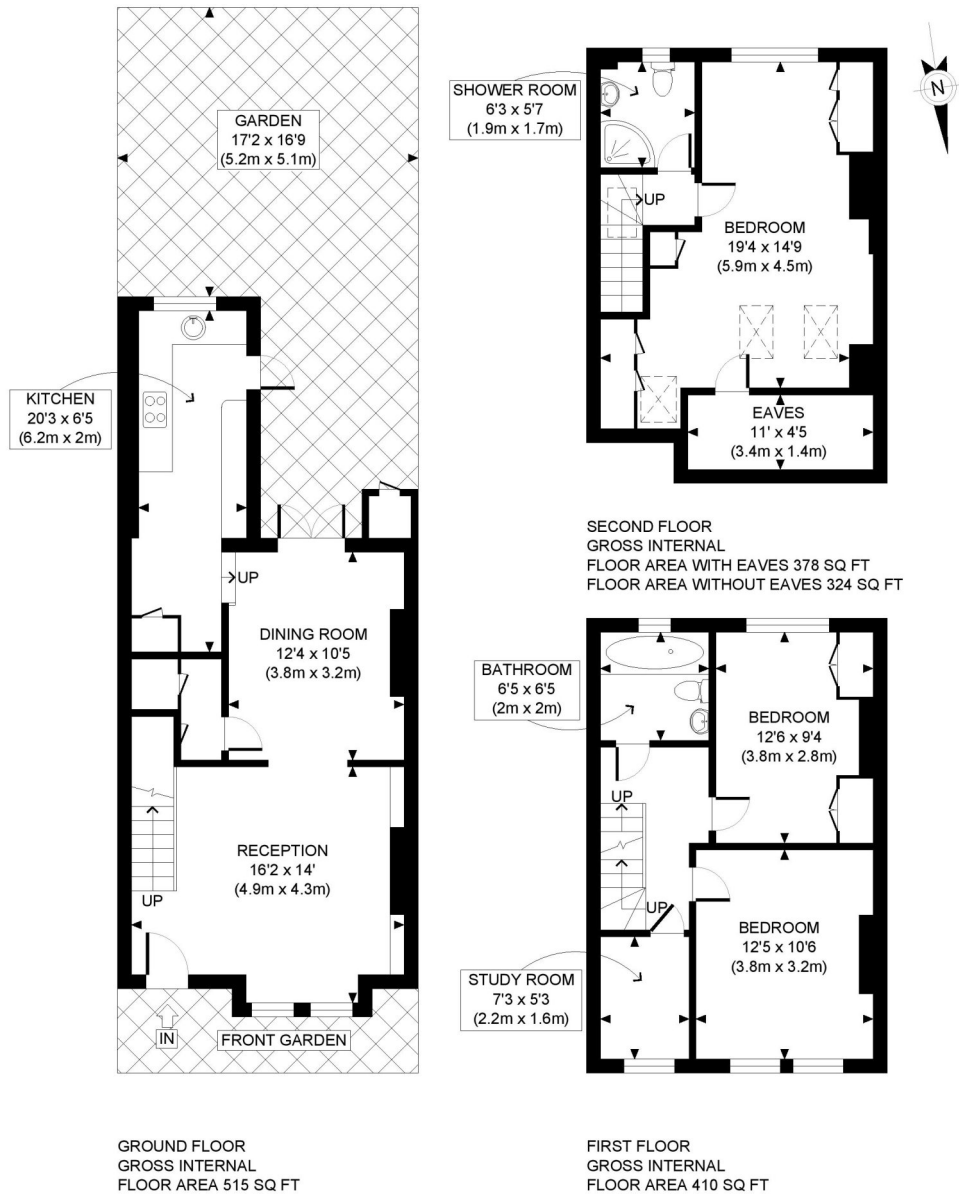
A delightful three/four-bedroom Victorian terrace in this popular location. The property comprises of a through reception with French doors which open onto a private south facing garden and a discreet galley kitchen. On the first floor there are two double bedrooms, a study and a bathroom in addition to which the loft space has been converted into a substantial bedroom with an en-suite shower room. Attractive and in generally good condition the property further benefits from no onward chain.

LOCATION:

Batson Street is a small residential road which runs between Percy Road and Westville Road. It is close to the charming Ravenscourt Park and the highly regarded Greenside School.





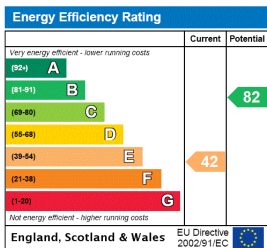


APPROX. GROSS INTERNAL FLOOR AREA WITH EAVES: 1303 SQ FT/ 121 SQM
APPROX. GROSS INTERNAL FLOOR AREA WITHOUT EAVES: 1249 SQ FT/ 116 SQM

PROPERTY PHOTO PLANS.co.uk

ONE STOP SHOP FOR PROPERTY MARKETING

Whilst every attempt has been made to ensure the accuracy of the floor plan contained here, measurements of the doors, windows, rooms and any other items are approximate and no responsibility is taken for any errors, omissions, or miss-statement. This plan is for illustrative purposes only and should be used as such by any prospective client. The services, systems and appliances shown have not been tested and no guarantee as to the operability or efficiency can be given.



Shepherds Bush | 020 8735 3266 | shepherdsbush@winkworth.co.uk

Winkworth

for every step...