



THE LIMES, LONDON, SW18
£2,150 PER MONTH PART FURNISHED

Winkworth



THE LIMES, LONDON, SW18

A newly refurbished and exceptionally well-presented two double bedroom apartment, situated on the first floor of the highly regarded Limes development, ideally located in the heart of Southfields.

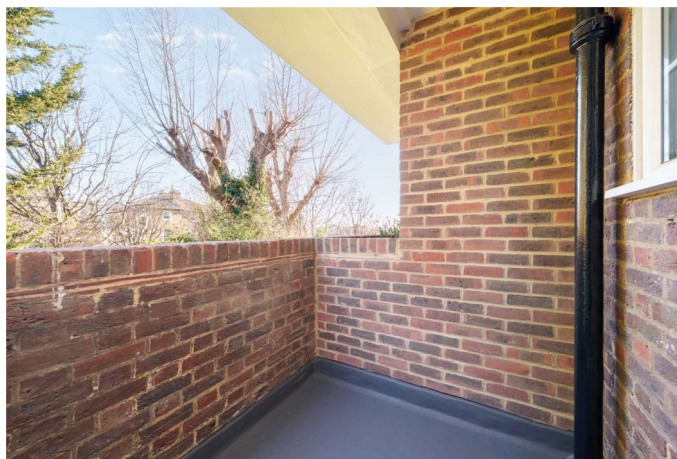
The property has recently undergone an extensive renovation programme including a brand new fitted kitchen, a new contemporary bathroom, and complete redecoration throughout.

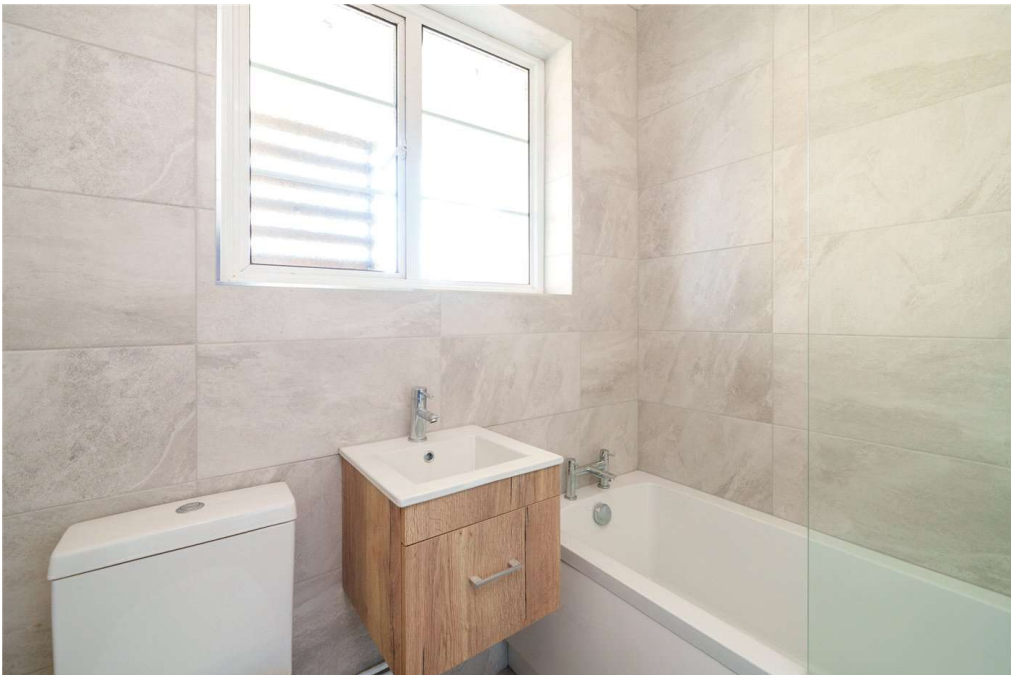
Accommodation extends to approximately 592 sq ft and comprises a spacious reception/dining room with attractive wooden flooring and direct access to a private balcony overlooking the well-maintained communal gardens. The reception space is bright and versatile, well suited to both everyday living and entertaining.

The newly installed kitchen offers modern cabinetry, good storage and worktop space, and a clean, practical layout. There are two bedrooms, with the principal bedroom particularly generous in size and the second bedroom ideal as a guest room and/or study. The newly fitted bathroom is finished in neutral, modern tiling and features a bath with overhead shower.

Further benefits include two private balconies, double glazing throughout, part-furnished accommodation and access to beautifully maintained communal gardens.

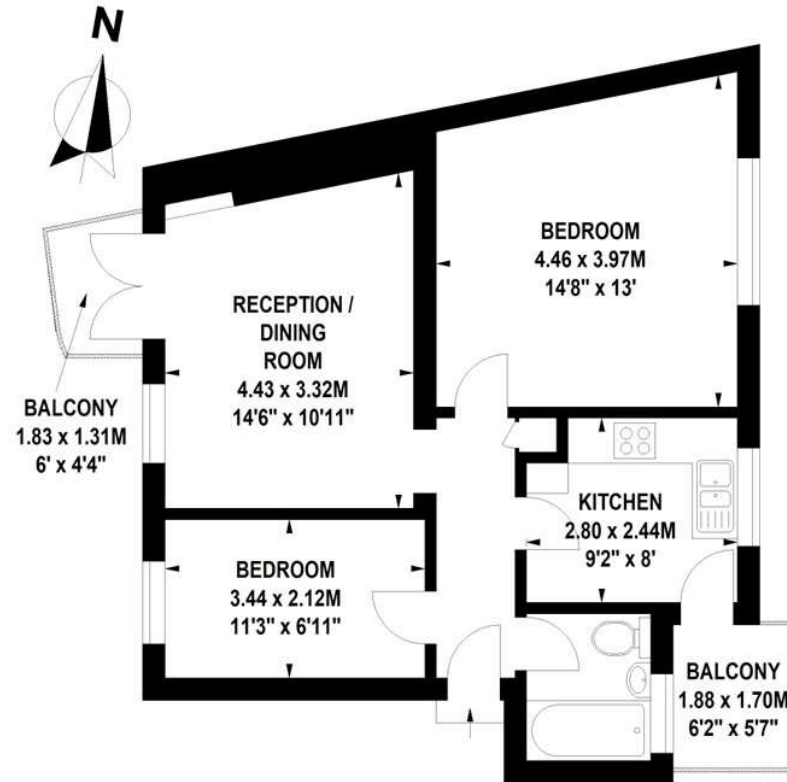
Limes Gardens is a quiet residential setting moments from Southfields Underground Station (District Line), King George's Park, and the array of shops, cafés and amenities of Southfields and Wandsworth.





The Limes, Limes Gardens, SW18

Approximate Gross Internal Area 55 sq.m / 592 sq. ft



First Floor

Floor Plan produced for WINKWORTH by Mays Floorplans © . Tel 020 3397 4594

Illustration for identification purposes only. Not to scale.

Orientation, measurements, and other details are approximate and for guidance only, purchasers should verify details independently.

Where a room has a sloping ceiling the dotted line marks 1.50M height, and all measurements shown are at floor level.

Southfields | 020 8877 1000 | southfields@winkworth.co.uk

winkworth.co.uk

Winkworth wishes to inform prospective buyers and tenants that these particulars are a guide and act as information only. All our details are given in good faith and believed to be correct at the time of printing but they don't form part of an offer or contract. No Winkworth employee has authority to make or give any representation or warranty in relation to this property. All fixtures and fittings, whether fitted or not are deemed removable by the vendor unless stated otherwise and room sizes are measured between internal wall surfaces, including furnishings.

Winkworth