



LADBROKE GROVE, W10
£1,850 PER MONTH PART FURNISHED

Winkworth



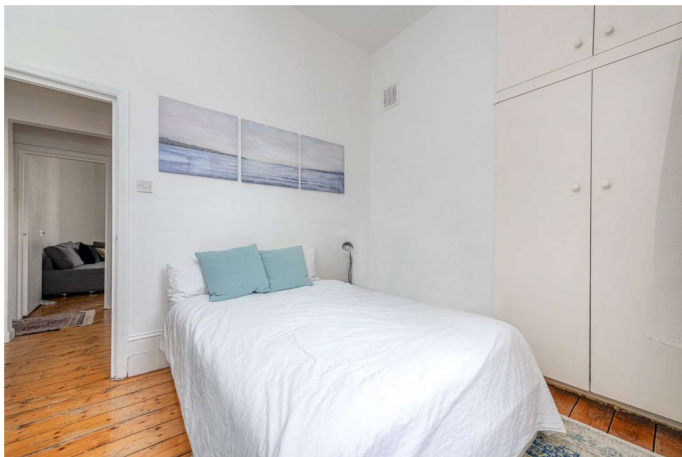
LADBROKE GROVE, W10

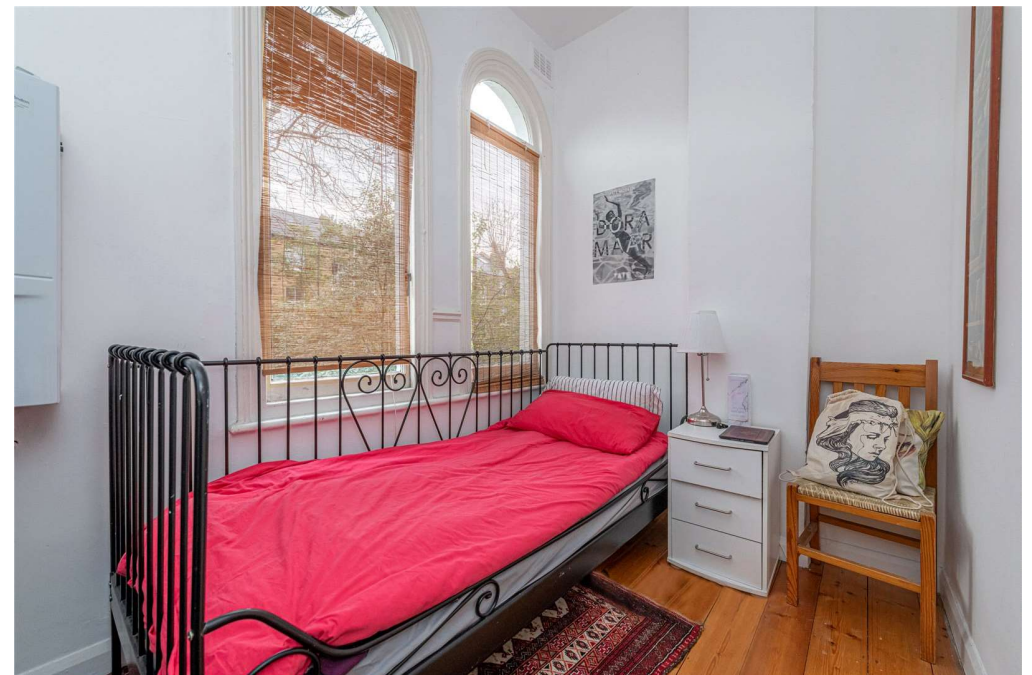
This spacious one-bedroom apartment is located in the heart of Ladbroke Grove Notting Hill (Zone 2) and is ideally located within a short walk of the underground and local amenities of Ladbroke Grove.

North Kensington's multicultural hotspot, Ladbroke Grove is a prime example of a modern urban living offering plenty of unique restaurants, coffee shops and antique furniture stores. Renowned Portobello market and transport links at Ladbroke Grove are a stone throw away.

The property has been tastefully decorated and comprises a bright spacious reception, double bedroom with built in storage , separate kitchen , bathroom and an additional room which is demised to the property (but is located externally on the landing) which can be used as an office space, storage or extra room.

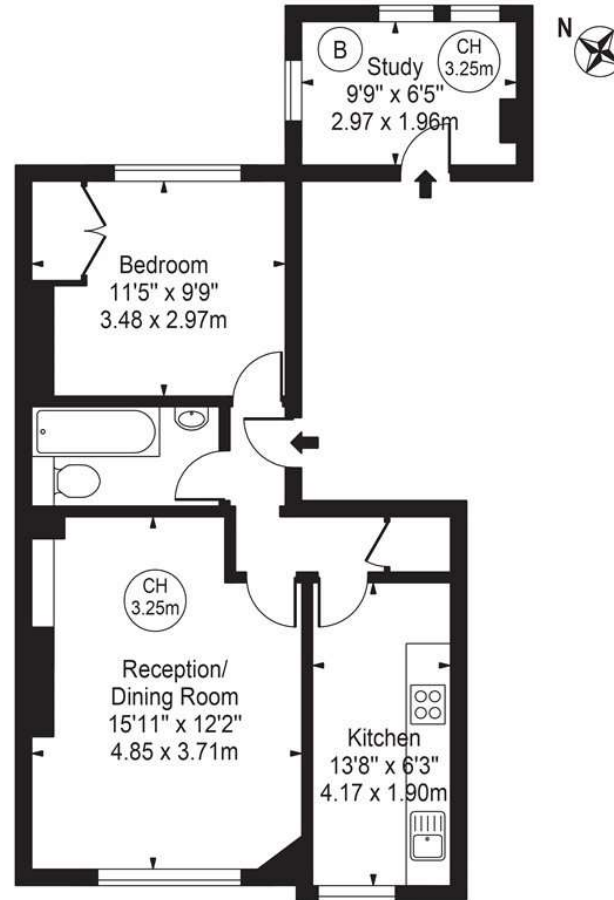
Available mid May 2025





Ladbroke Grove

Approx. Gross Internal Area 484 Sq Ft - 44.97 Sq M
(Excluding Study)
Approx. Gross Internal Area Of Study 63 Sq Ft - 5.82 Sq M



Second Floor
For Illustration Purposes Only - Not To Scale

This floor plan should be used as a general outline for guidance only and does not constitute in whole or in part an offer or contract. Any intending purchaser or lessee should satisfy themselves by inspection, searches, enquiries and full survey as to the correctness of each statement. Any areas, measurements or distances quoted are approximate and should not be used to value a property or be the basis of any sale or let.
Copyright Morriarti Photography & Design LTD

Energy Efficiency Rating		
	Current	Potential
Very energy efficient - lower running costs		
(92-100) A		
(81-91) B		
(69-80) C		
(55-68) D		
(39-54) E		
(21-38) F		
(1-20) G		
Not energy efficient - higher running costs		
England, Scotland & Wales	69	77
EU Directive 2002/91/EC		

North Kensington | 020 7792 5000 | northkensington@winkworth.co.uk

winkworth.co.uk

Winkworth wishes to inform prospective buyers and tenants that these particulars are a guide and act as information only. All our details are given in good faith and believed to be correct at the time of printing but they don't form part of an offer or contract. No Winkworth employee has authority to make or give any representation or warranty in relation to this property. All fixtures and fittings, whether fitted or not are deemed removable by the vendor unless stated otherwise and room sizes are measured between internal wall surfaces, including furnishings.

Winkworth