



GRANGER COURT, BOREHAMWOOD, HERTFORDSHIRE, WD6  
**£250,000 LEASEHOLD**

## A WELL PRESENTED ONE BEDROOM SECOND FLOOR APARTMENT

Borehamwood | 020 8953 8899 | borehamwood@winkworth.co.uk





### DESCRIPTION:

This well presented one bedroom second floor Apartment would make an ideal purchase for a first time buyer, downsizer or buy to let investor.

Located a short walk from Borehamwood Thameslink station and the High Street the property measures approaching 500 square feet and benefits from a long lease, Southerly facing reception and bedroom, gas central heating and allocated parking space.

### AT A GLANCE

- 1 Bedroom
- Allocated Parking Space
- 495 Square Feet
- Gas Central Heating
- Double Glazed
- Chain Free
- 109 Year Lease







Winkworth



Winkworth

Approximate Gross Internal Area = 46.0 sq m / 495 sq ft

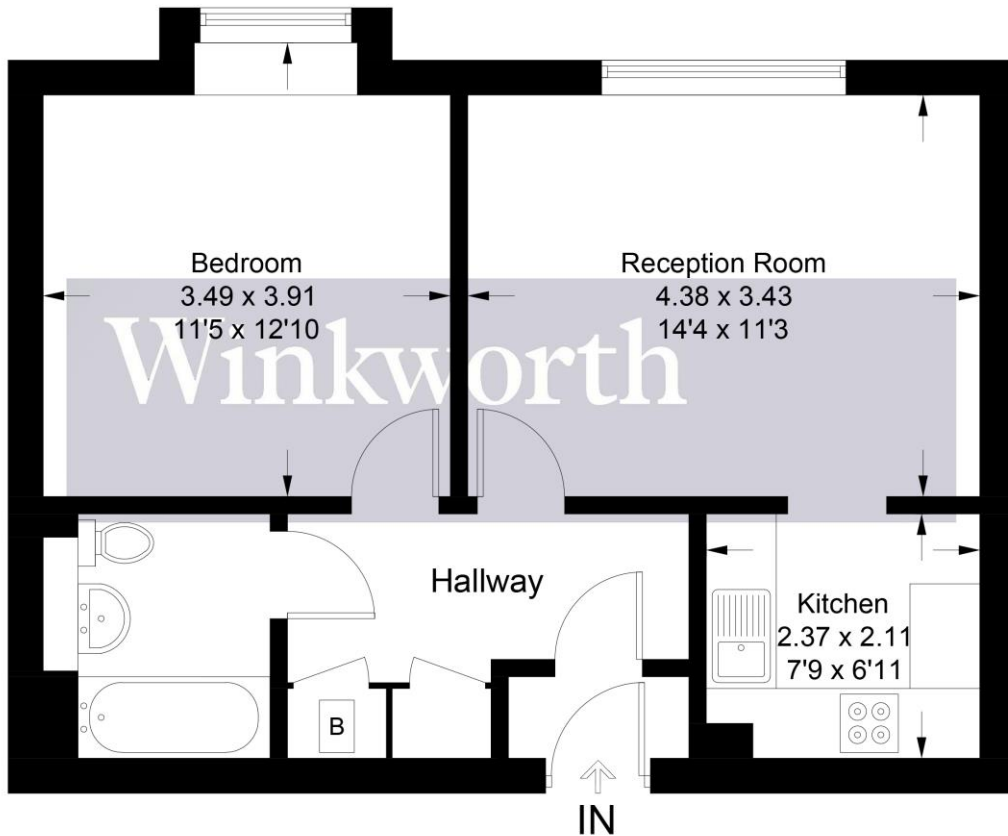
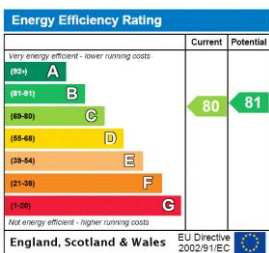


Illustration for identification purposes only, measurements are approximate, not to scale. Winkworth © 2024 (ID1058804)

This floorplan is for illustration purposes only and is not to scale. The position and size of doors, windows, appliances and other features are approximate.



**Tenure:** Leasehold  
**Term:** Expires - 28/03/2133  
**Service Charge:** £ TBA  
**Ground Rent:** £ TBA  
**Council Tax Band:** B

Where no figures are shown, we have been unable to ascertain the information. All figures that are shown were correct at the time of printing.