



**SHOOTERS HILL ROAD, BLACKHEATH, SE3 7HS**  
**£399,000 LEASEHOLD**

**A SUPERB ONE DOUBLE BEDROOM APARTMENT FOUND ON THE FIRST FLOOR OF THIS IMPRESSIVE FOUR STOREY SEMI-DETACHED VICTORIAN HOUSE. BOASTING HIGH CEILINGS THE PROPERTY IS LOCATED VERY CLOSE TO THE HEATH AND CLOSE TO BLACKHEATH VILLAGE AND GREENWICH PARK.**

**Blackheath | 0208 8520999 | [blackheath@winkworth.co.uk](mailto:blackheath@winkworth.co.uk)**

**Winkworth**

*[winkworth.co.uk](http://winkworth.co.uk)*

See things differently

DESCRIPTION:

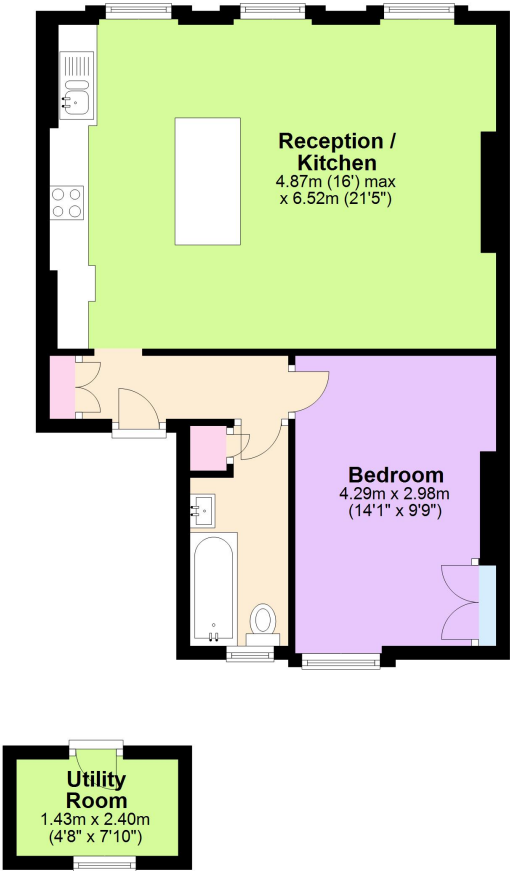
The property is in good decorative order although offers scope to enhance. Feature include large sash windows, shutters, stripped floorboards and gas fired central heating.

The accommodation briefly comprises; a large 21'5 x 16 lounge dinner with open plan kitchen, 14'1 x 9'9 master bedroom with built in cupboard and a bathroom. There is a storage cupboard in the hallway and a separate utility room accessed via the communal highway. To the rear is a large and well-kept communal garden.

This is a fantastic Victorian conversion and perfect for a new buyer to put their own stamp on. There is no chain and your immediate viewing is essential. Virtual tours can be seen at winkworth.co.uk

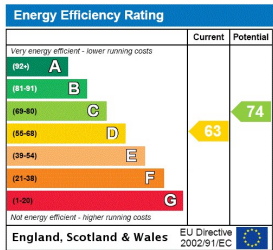
The property is very convenient for transport links with buses stopping for Blackheath Station, 0.5miles, Greenwich and North Greenwich, 1.9 miles. Blackheath Common, (0.2 miles), and Greenwich Park, (0.4miles), are both just a short walk and Blackheath Village with its array or restaurants, bars and boutique shops is only 0.6 miles.

First Floor  
Approx. 57.1 sq. metres (615.1 sq. feet)



Total area: approx. 57.1 sq. metres (615.1 sq. feet)

This floorplan is for illustration purposes only and is not to scale. The position and size of doors, windows, appliances and other features are approximate.



Blackheath | 0208 8520999 | blackheath@winkworth.co.uk

