



Perry Rise, SE23

£500,000 *Leasehold*

2  1  1 

Guide Price £500,000 - £525,000.

This charming ground-floor apartment offers a perfect blend of space, character, and convenience, featuring two double bedrooms, a spacious living room with high ceilings, a separate kitchen with a dining room off it, a private garden and off-street parking. Ideally located close to local amenities, shops, schools, and excellent transport links.

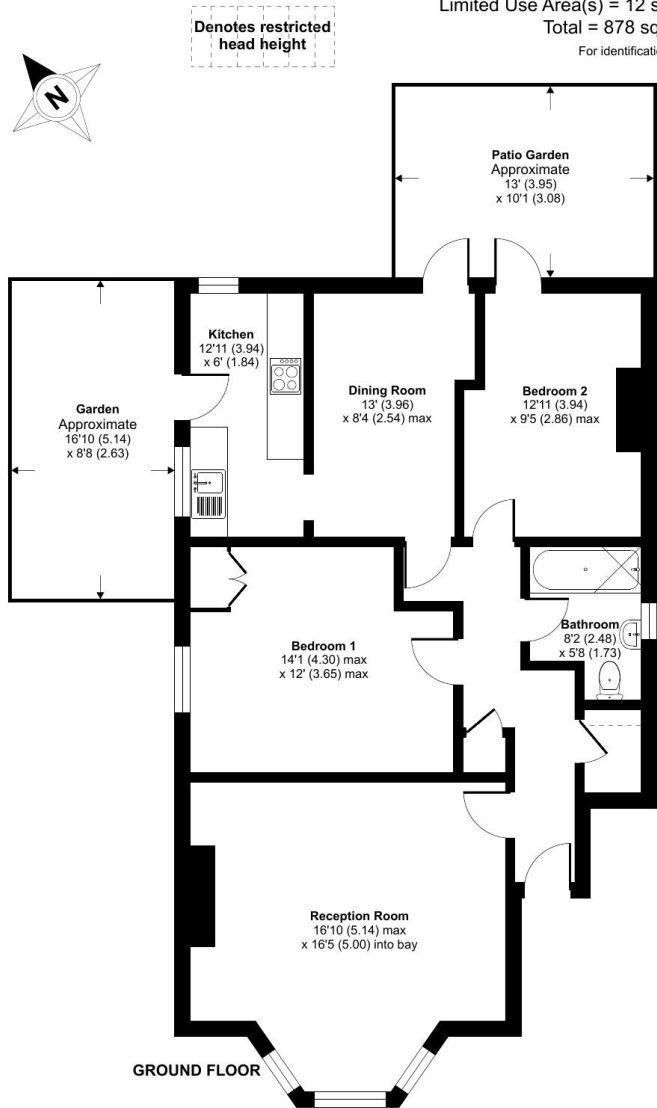


Forest Hill

| foresthill@winkworth.co.uk

Perry Rise, London, SE23

Approximate Area = 866 sq ft / 80.4 sq m
Limited Use Area(s) = 12 sq ft / 1.1 sq m
Total = 878 sq ft / 81.6 sq m
For identification only - Not to scale



Floor plan produced in accordance with RICS Property Measurement Standards incorporating International Property Measurement Standards (IPMS2 Residential). © nichecom 2025. Produced for Winkworth Forest Hill and New Cross. REF: 1372292.

MATERIAL INFO

Tenure: Leasehold

For more information, scan the QR code or visit the link below



<https://www.winkworth.co.uk/sale/property/FHL250294>

Where no figures are shown, we have been unable to ascertain the information. All figures that are shown were correct at the time of printing.

Forest Hill

| foresthill@winkworth.co.uk