



Lime Grove, Shepherds Bush, London, W12

£825,000 Share of Freehold

A bright and spacious three bedroom, two bathroom split level flat. Sold with no onward chain.

Reception Room | Kitchen | 3 Bedrooms | Bathroom | Shower Room | 1,226 Sq F / 114 Sq M | Council Tax Band D | EPC Rating Band D

Winkworth

winkworth.co.uk

for every step...



LOCATION

Lime Grove is close to Hammersmith Park, Shepherds Bush Green, Westfield shopping centre, White City Place and The Television Centre which has an abundance of restaurants, Electric Cinema and transport links which include Shepherds Bush market (Hammersmith & City line), Shepherds Bush (Central line), White City (Central line) and Shepherds Bush Overground. The A40 is also within easy access.

DESCRIPTION

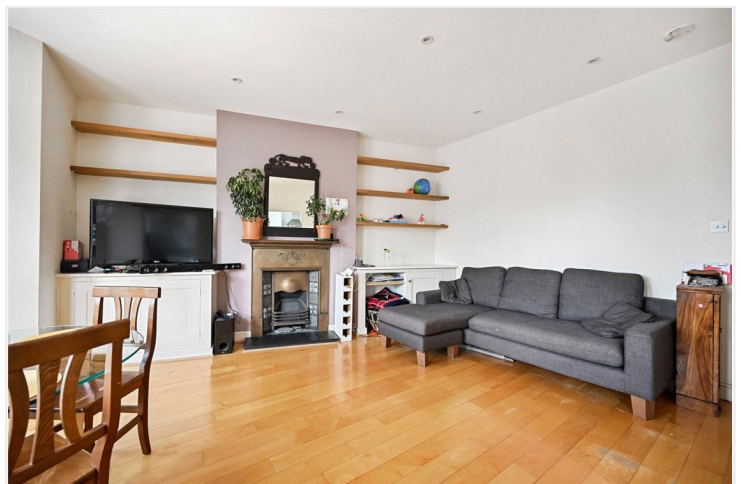
A bright and spacious three bedroom, two bathroom split level flat.

Located on the 1st and 2nd floor of this beautiful period building, the flat comprises a west facing reception room, kitchen, three bedrooms and two bathrooms (one is en-suite). The property benefits from ample storage throughout and is sold with no onward chain.

Share of Freehold with underlying lease of 999 years from 29th September 1994

SC: Ad Hoc

GR: £100 p.a





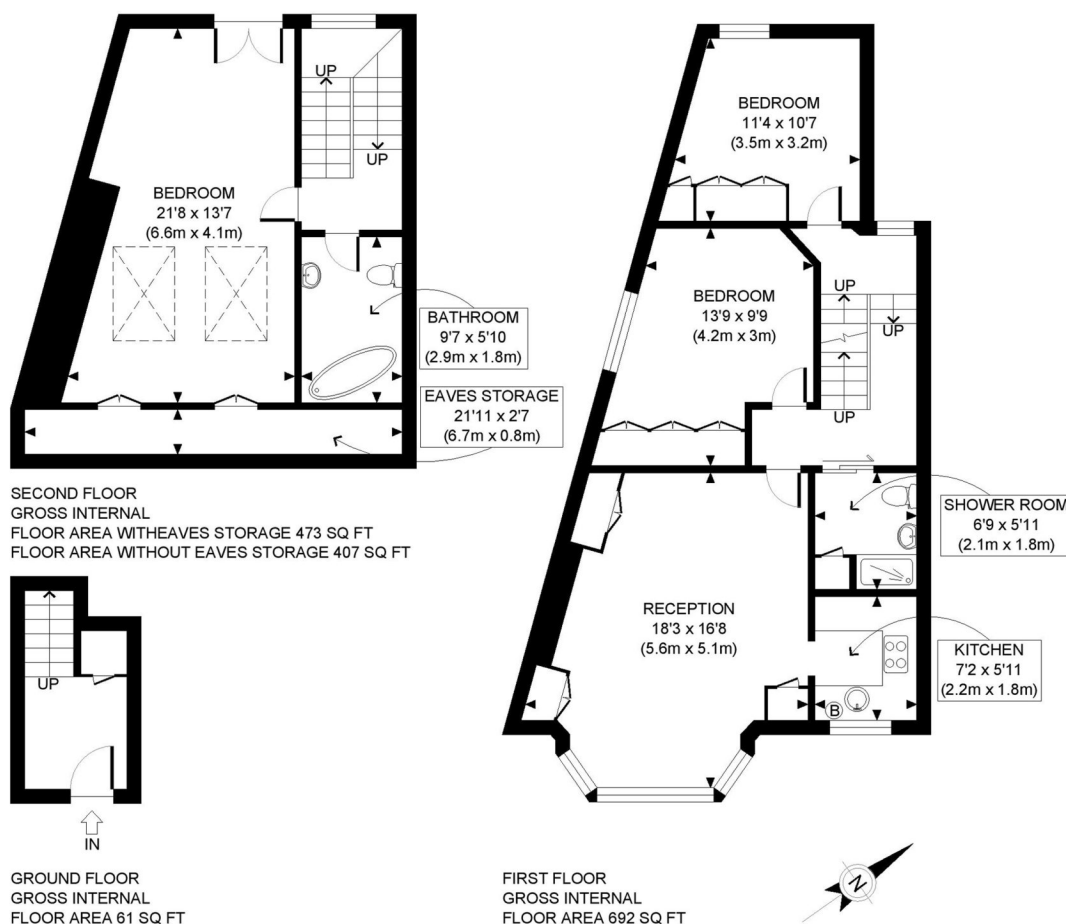
LOCAL AUTHORITY
Hammersmith & Fulham

TENURE
Share of Freehold 968 years 1 months.

PRICE: £825,000 Share of Freehold



Score	Energy rating	Current	Potential
92+	A		
81-91	B		
69-80	C		76 C
55-68	D	57 D	
39-54	E		
21-38	F		
1-20	G		



APPROX. GROSS INTERNAL FLOOR AREA WITH EAVES STORAGE: 1226 SQ FT/ 114 SQM
APPROX. GROSS INTERNAL FLOOR AREA WITHOUT EAVES STORAGE: 1160 SQ FT/ 108 SQM

PROPERTY PHOTO PLANS .CO.UK

ONE STOP SHOP FOR PROPERTY MARKETING

This plan is for illustrative purposes only and should be used as such by any prospective client. Whilst every attempt has been made to ensure the accuracy of the Floor Plan contained here, measurements of the doors, windows, rooms and any other items are approximate and no responsibility is taken for any errors, omissions, or misstatement. The services, systems and appliances shown have not been tested and no guarantee as to the operability or efficiency can be given.

The displayed square footage is taken from the floor plans with measurements created using the Royal Institute of Chartered Surveyors' Code of Practice for Measuring. These measurements are approximate and included for illustrative purposes only. Winkworth does not make any representation as to the accuracy of these measurements and you should seek to verify them for yourself. Winkworth accept no liability for any loss you may suffer if you rely on these measurements.

Shepherds Bush | 020 8735 3266 | shepherdsbush@winkworth.co.uk

Winkworth

for every step...

Under the Property Misdescriptions Act 1991, these Particulars are a guide and act as information only. All details are given in good faith and are believed to be correct at time of printing. Winkworth give no representation as to their accuracy and potential purchasers or tenants must satisfy themselves by inspection or otherwise as to their correctness. No employee of Winkworth has authority to make or give any representation or warranty in relation to this property.