



LABURNUM COURT, LABURNUM STREET, LONDON, E2
'OFFERS IN EXCESS OF' £325,000 LEASEHOLD

A TWO BEDROOM APARTMENT WITH A PRIVATE BALCONY JUST A SHORT WALK TO HAGGERSTON & HOXTON STATIONS

Hackney | 020 8986 4216 | hackney@winkworth.co.uk

Winkworth



DESCRIPTION:

This fourth-floor ex-local authority flat offers a good sized two-bedroom flat. Boasting two generously sized double bedrooms, a separate bathroom and toilet, and a well-fitted kitchen that connects to the living room. The living room extends outdoors, offering direct access to a private balcony

With a total floor space of approximately 669 square feet, this flat provides ample room to create a cozy and inviting living environment. The two bedrooms ensure comfortable accommodation for residents. The open living area provides ample natural light and the private balcony becomes an extension of your living space.

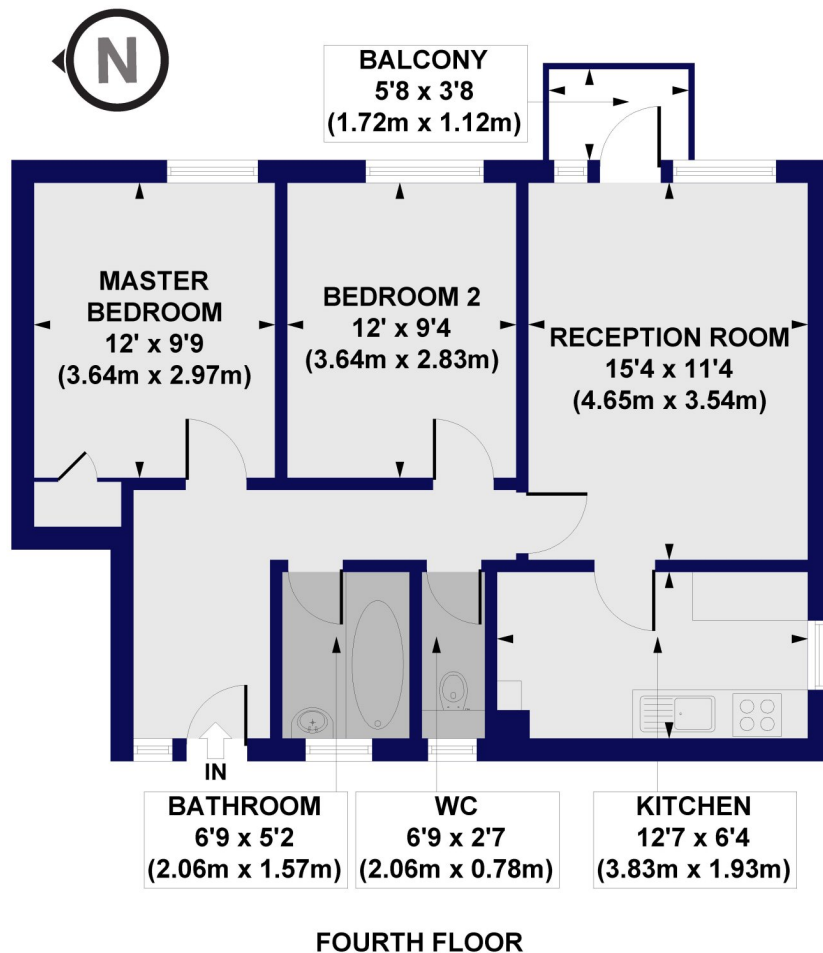
Laburnum Grove is situated in a vibrant and sought-after area that offers a delightful array of amenities and excellent transport links. The neighbourhood exudes a sense of community and convenience, making it an attractive choice for urban living. For daily essentials, you'll find a variety of local shops, supermarkets, and markets nearby. Additionally, Laburnum Grove benefits from a selection of cozy cafes, restaurants, and pubs where you can savor a meal or relax with friends. For green spaces and outdoor activities, Haggerston Park is just a short stroll away. Commuters will appreciate the superb transport links in the area. Laburnum Grove is well-connected to public transportation, with bus stops and train stations like Haggerston and Hoxton stations within easy reach. You'll have quick access to the city centre and surrounding areas, making your daily commute a breeze.

Winkworth



Winkworth

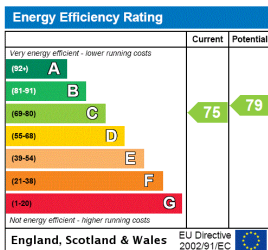
Laburnum Court, Laburnum Street, E2
 Approx. Gross Internal Floor Area 669 sq. ft / 62.19 sq. m



All measurements of walls, doors, windows, fittings and appliances, including their size and location, are shown as standard sizes and do not constitute any warranty or representation by the seller, their agent or CP Creative. Any intending purchaser must satisfy himself by inspection or otherwise as to the correctness of the information contained in these plans. This plan is for illustrative purposes only and should be used as such by any prospective purchasers.

Winkworth

This floorplan is for illustration purposes only and is not to scale. The position and size of doors, windows, appliances and other features are approximate.



Hackney | 020 8986 4216 | hackney@winkworth.co.uk



winkworth.co.uk

See things differently

Winkworth wishes to inform prospective buyers and tenants that these particulars are a guide and act as information only. All our details are given in good faith and believed to be correct at the time of printing but they don't form part of an offer or contract. No Winkworth employee has authority to make or give any representation or warranty in relation to this property. All fixtures and fittings, whether fitted or not are deemed removable by the vendor unless stated otherwise and room sizes are measured between internal wall surfaces, including furnishings.