



## Holberton Gardens, NW10

£3,250 per month



Family Home Offering A Double Aspect Reception Room With Three Double Bedrooms, Large Eat-In Kitchen & A Rear Private Garden

### KEY FEATURES

- Victorian period features
- Bright, open interiors
- Private rear garden
- Potential to extend
- Quiet residential street
- Near top schools



Kensal Rise & Queens Park

0208 960 4947 | [kensalrise@winkworth.co.uk](mailto:kensalrise@winkworth.co.uk)

**Winkworth**

for every step...









#### MATERIAL INFO

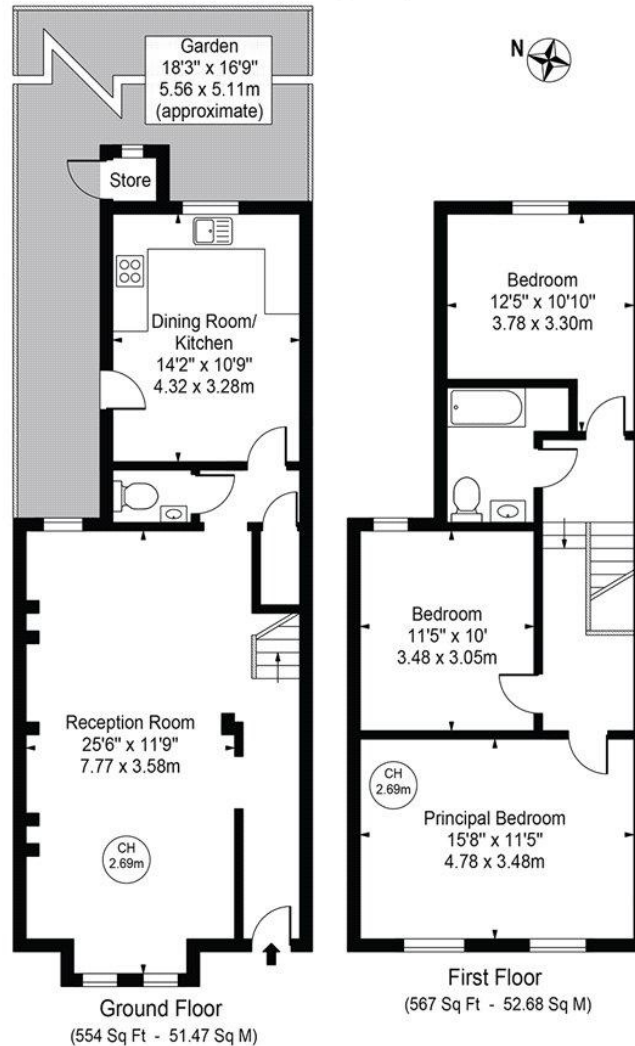
**Deposit:** 5 weeks rent

**Holding Deposit:** 1 weeks rent

**Council Tax Band:** D

# Holberton Gardens

Approx. Gross Internal Area 1121 Sq Ft - 104.14 Sq M  
(Excluding Store)

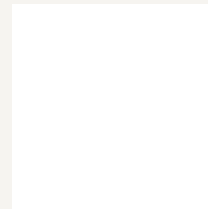


For Illustration Purposes Only - Not To Scale

This floor plan should be used as a general outline for guidance only and does not constitute in whole or in part an offer or contract. Any intending purchaser or lessee should satisfy themselves by inspection, searches, enquiries and full survey as to the correctness of each statement. Any areas, measurements or distances quoted are approximate and should not be used to value a property or be the basis of any sale or let.

Copyright Morriarti Photography & Design LTD

For more information, scan the QR code or visit the link below



<https://www.winkworth.co.uk/rent/property/KQP260041>

Where no figures are shown, we have been unable to ascertain the information. All figures that are shown were correct at the time of printing.

**Kensal Rise & Queens Park**

0208 960 4947 | [kensalrise@winkworth.co.uk](mailto:kensalrise@winkworth.co.uk)

**Winkworth**

for every step...

Winkworth wishes to inform prospective buyers and tenants that these particulars are a guide and act as information only. All our details are given in good faith and believed to be correct at the time of printing but they don't form part of an offer or contract. No Winkworth employee has authority to make or give any representation or warranty in relation to this property. All fixtures and fittings, whether fitted or not are deemed removable by the vendor unless stated otherwise and room sizes are measured between internal wall surfaces, including furnishings.