



Winchester Street, SW1V

£2,500 PER MONTH

FURNISHED

AT A GLANCE

- One Bedroom
- One Bathroom
- Furnished
- Located in the 'Pimlico Grid'
- Roof Terrace
- Close to Pimlico and Victoria stations

Winkworth

for every step...



| Score | Energy rating | Current | Potential |
|-------|---------------|---------|-----------|
| 92+ | A | | |
| 81-91 | B | | |
| 69-80 | C | 74 C | 76 C |
| 55-68 | D | | |
| 39-54 | E | | |
| 21-38 | F | | |
| 1-20 | G | | |

WINCHESTER STREET, SW1V

£2,500 PER MONTH

FURNISHED

A wonderful opportunity to rent this one double bedroom flat on the top floor of this period building. The property comprises of an open plan kitchen reception room, a double bedroom conveniently located at the back of the building with built-in storage, and a bathroom. To the rear of the property there is an attractive private and enclosed roof terrace.

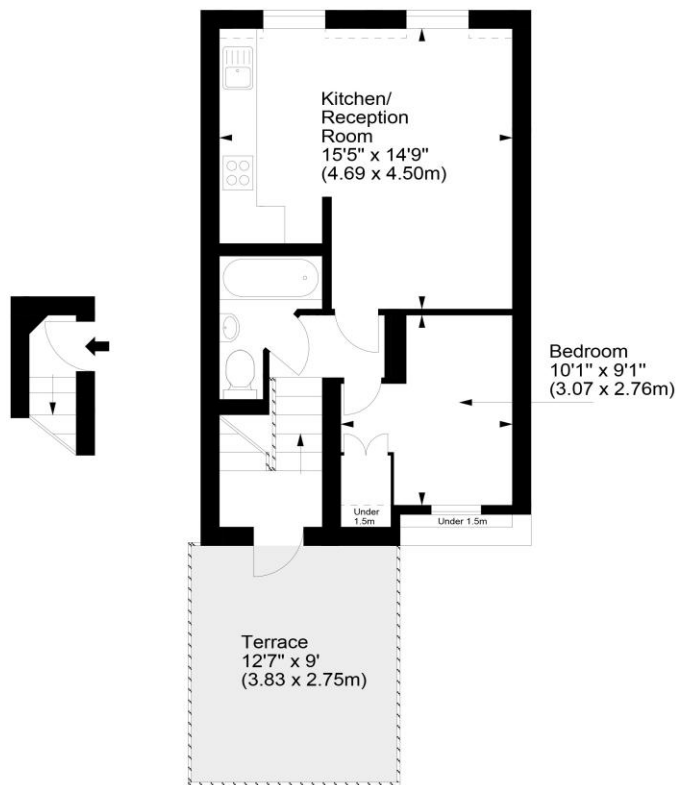
Winchester Street is conveniently located in the 'Pimlico Grid' and within a short walk of Pimlico and Victoria stations.



winkworth wishes to inform prospective buyers and tenants that these particulars are a guide and act as information only. All our details are given in good faith and believed to be correct at the time of printing but they don't form part of an offer or contract. No winkworth employee has authority to make or give any representation or warranty in relation to this property. All fixtures and fittings, whether fitted or not are deemed removable by the vendor unless stated otherwise and room sizes are measured between internal wall surfaces - including fireplaces.

Winchester Street, SW1

Approx. Gross Internal Area
412 Sq Ft - 38.27 Sq M



Second Floor
Entrance

Third Floor

For illustration purposes only. Not to scale.
All measurements are taken and shown at floor level.
www.r3photography.co.uk © Photography / Floor Plans / Lease Plans / EPCs

Winkworth

Pimlico & Westminster | 020 7828 1786 |
pimlico@winkworth.co.uk

winkworth.co.uk/pimlico

Winkworth

for every step...