

HORNSEY STREET, LONDON, N7
£575,000 LEASEHOLD

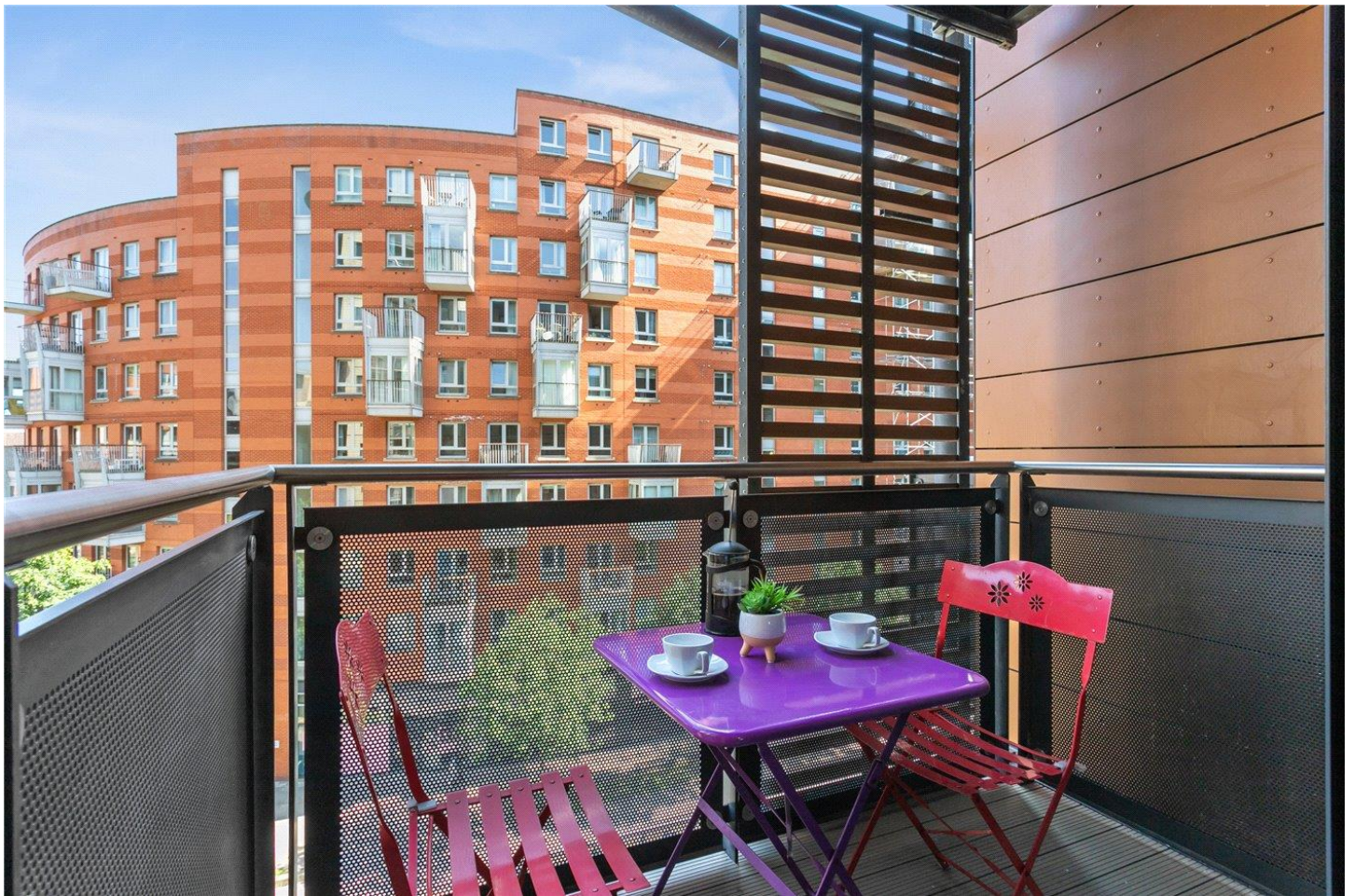
**FANTASTIC, TWO BEDROOM APARTMENT SET
 IN A QUIET DEVELOPMENT IN N7**

Islington | 0207 354 2480 | islington@winkworth.co.uk

Winkworth

winkworth.co.uk

See things differently



DESCRIPTION:

A spacious, two double bedroom apartment positioned on the fourth floor of this popular development moments from the tube in N7. Standing at a sizeable 790sqft, the property has well-proportioned rooms and features ample storage space throughout. Accommodation comprises of a wonderfully bright, open plan living room/kitchen space featuring floor to ceiling windows and a south-east facing private balcony. Both double bedrooms are located to the front of the flat, whilst the property is completed with a modern and tastefully decorated bathroom.

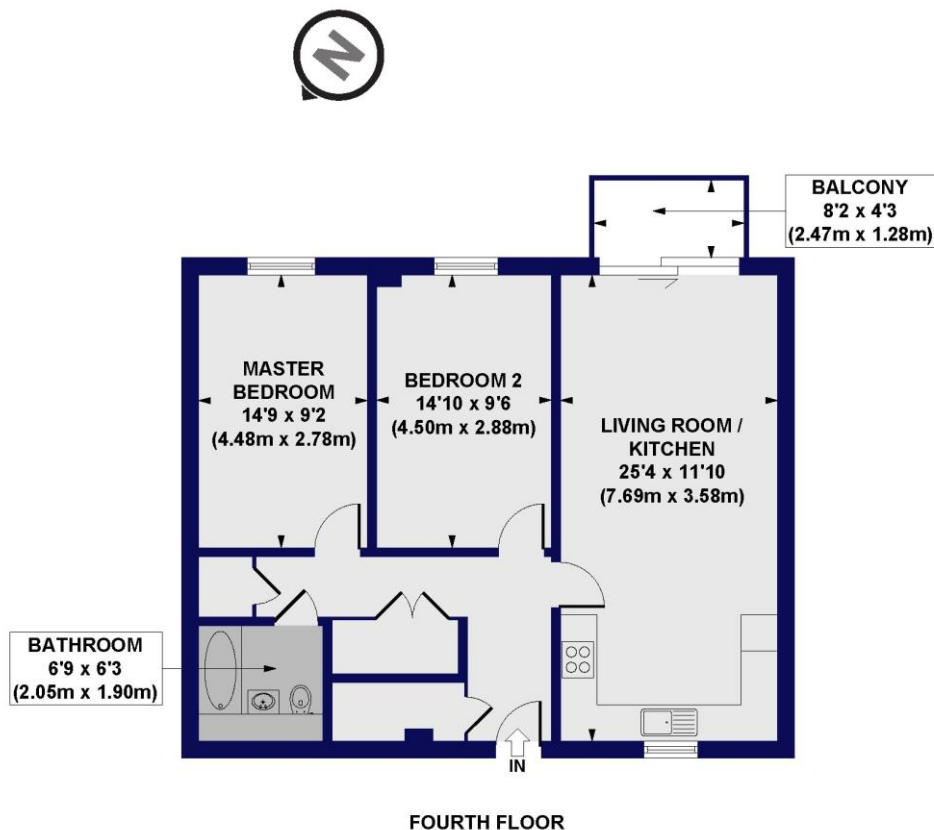
Hornsey Street is only a short distance from the ever-popular Holloway Road with restaurants such as Provisions, Zia Lucia and Berto, and even more locally Westerns Laundry on Drayton Park and La Peche Mignon on Ronald's Road. Highbury Barn boasts an array of award-winning food shops and the recently renovated Highbury Barn pub. The property is superbly connected, with Holloway Road Station (Piccadilly line) and Drayton Park Station (Great Northern only 8 mins to Moorgate) being moments away. Highbury & Islington Station (Victoria Line and Overground) and the popular shops and restaurants on Upper Street are easily reached through the green, open spaces of Highbury Fields.

Winkworth



Winkworth

Hornsey Street, N7
Approx. Gross Internal Floor Area 790 sq. ft / 73.36 sq. m



All measurements of walls, doors, windows, fittings and appliances, including their size and location, are shown as standard sizes and do not constitute any warranty or representation by the seller, their agent or CP Creative. Any intending purchaser must satisfy himself by inspection or otherwise as to the correctness of the information contained in these plans. This plan is for illustrative purposes only and should be used as such by any prospective purchasers.

Winkworth

This floorplan is for illustration purposes only and is not to scale. The position and size of doors, windows, appliances and other features are approximate.

Score	Energy rating	Current	Potential
92+	A		
81-91	B	83 B	83 B
69-80	C		
55-68	D		
39-54	E		
21-38	F		
1-20	G		

Islington | 0207 354 2480 | islington@winkworth.co.uk



winkworth.co.uk

See things differently

Winkworth wishes to inform prospective buyers and tenants that these particulars are a guide and act as information only. All our details are given in good faith and believed to be correct at the time of printing but they don't form part of an offer or contract. No Winkworth employee has authority to make or give any representation or warranty in relation to this property. All fixtures and fittings, whether fitted or not are deemed removable by the vendor unless stated otherwise and room sizes are measured between internal wall surfaces, including furnishings.