



**PARK LANE, HA2**  
**£700,000 FREEHOLD**

Tenure: Freehold  
Council Tax Band: E (London Borough of Harrow)  
EPC Rating: C

Harrow | 020 8861 3933 | harrow@winkworth.co.uk

**Winkworth**

for every step...

*winkworth.co.uk*





### DESCRIPTION:

Proudly positioned in one of Harrow's most sought-after neighbourhoods and just a stone's throw from the picturesque Alexandra Park, this stunning four-bedroom semi-detached home is the perfect blend of modern luxury and timeless elegance.

Step inside to discover bright, airy interiors, beautifully finished to a high standard, offering a welcoming and sophisticated space for growing families or discerning buyers. The generous living areas are ideal for both entertaining and everyday comfort, while the stylish kitchen and bathrooms add a contemporary touch.

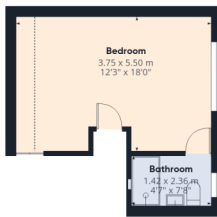
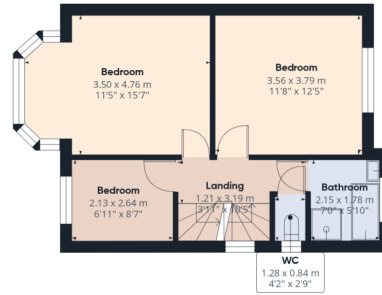
Outside, enjoy your own landscaped private garden – perfect for summer BBQs, family gatherings, or simply unwinding in your own peaceful retreat.

With top-rated schools, excellent transport links, and a vibrant selection of shops and amenities just moments away, this property ticks all the boxes for location, lifestyle, and long-term value.









**Approximate total area<sup>(1)</sup>**  
 133.2 m<sup>2</sup>  
 1434 ft<sup>2</sup>

**Reduced headroom**  
 1.9 m<sup>2</sup>  
 21 ft<sup>2</sup>

(1) Excluding balconies and terraces

Reduced headroom  
 ..... Below 1.5 m/5 ft

Calculations reference the RICS IPMS 3C standard. Measurements are approximate and not to scale. This floor plan is intended for illustration only.

GIRAFFE360

This floorplan is for illustration purposes only and is not to scale. The position and size of doors, windows, appliances and other features are approximate.

Score	Energy rating	Current	Potential
92+	A		
81-91	B		
69-80	C		80 C
55-68	D	69 C	
39-54	E		
21-38	F		
1-20	G		

Harrow | 020 8861 3933 | harrow@winkworth.co.uk

**Winkworth**

for every step...

*winkworth.co.uk*

Winkworth wishes to inform prospective buyers and tenants that these particulars are a guide and act as information only. All our details are given in good faith and believed to be correct at the time of printing but they don't form part of an offer or contract. No Winkworth employee has authority to make or give any representation or warranty in relation to this property. All fixtures and fittings, whether fitted or not are deemed removable by the vendor unless stated otherwise and room sizes are measured between internal wall surfaces, including furnishings.