

## WILFRED STREET, SW1E

£1,795,000

LEASEHOLD

### At a glance...

- Two Double Bedrooms
- Two Bathrooms
- Balcony
- Concierge
- Secure Parking
- Council Tax Band: G

**Winkworth**

for every step...





Score	Energy rating	Current	Potential
92+	A		
81-91	B	86 B	86 B
69-80	C		
55-68	D		
39-54	E		
21-38	F		
1-20	G		

## WILFRED STREET, SW1E

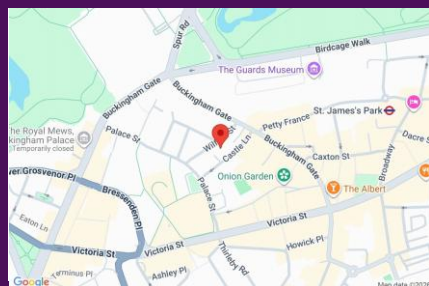
£1,795,000

LEASEHOLD

A lovely 2-bedroom flat on the 4th floor of this small, architect-designed development.

The flat is incredibly bright throughout and all the rooms are generously proportioned. Offering a fantastic reception room with great views down Catherine Place. Both bedrooms are a great size and offer built-in storage and ensuite shower rooms. Additionally there is a guest WC.

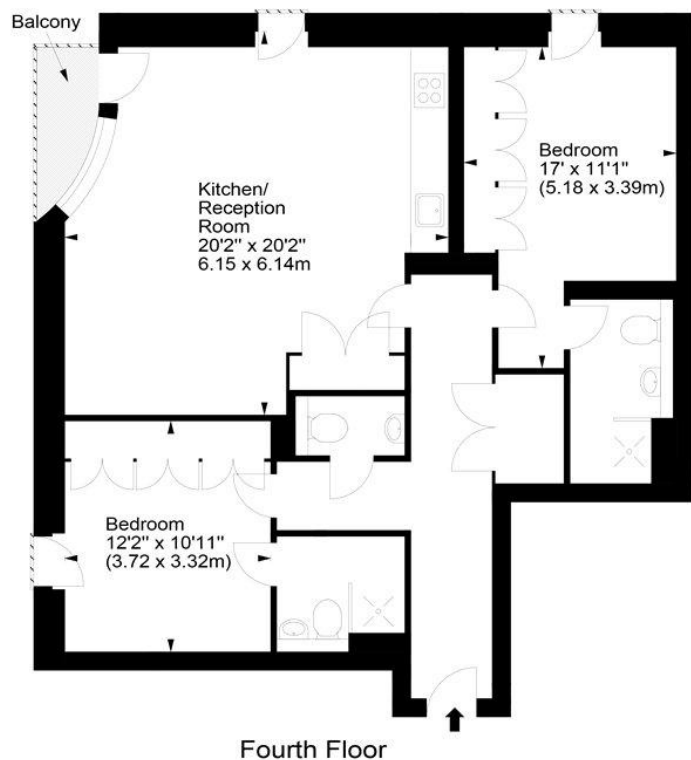
Aviary House is a great modern development in the heart of SW1 offering uniformed concierge and the flat comes with 1 secure underground parking space.



winkworth wishes to inform prospective buyers and tenants that these particulars are a guide and act as information only. All our details are given in good faith and believed to be correct at the time of printing but they don't form part of an offer or contract. No winkworth employee has authority to make or give any representation or warranty in relation to this property. All fixtures and fittings, whether fitted or not are deemed removable by the vendor unless stated otherwise and room sizes are measured between internal wall surfaces - including fireplaces.

## Aviary House, SW1

Approx. Gross Internal Area  
938 Sq Ft - 87.14 Sq M



For illustration purposes only. Not to scale.  
All measurements are taken and shown at floor level.  
www.r3photography.co.uk © Photography / Floor Plans / Lease Plans / EPCs

Winkworth

Pimlico & Westminster

020 7828 1786

pimlico@winkworth.co.uk

winkworth.co.uk/pimlico-westminster

Winkworth

for every step...