



WEST HILL, SW15
OFFERS OVER £375,000 LEASEHOLD





WEST HILL, SW15

Situated on the second floor of an attractive period building, this well-appointed one-bedroom apartment offers approximately 502 sq. ft. of bright and thoughtfully arranged living space.

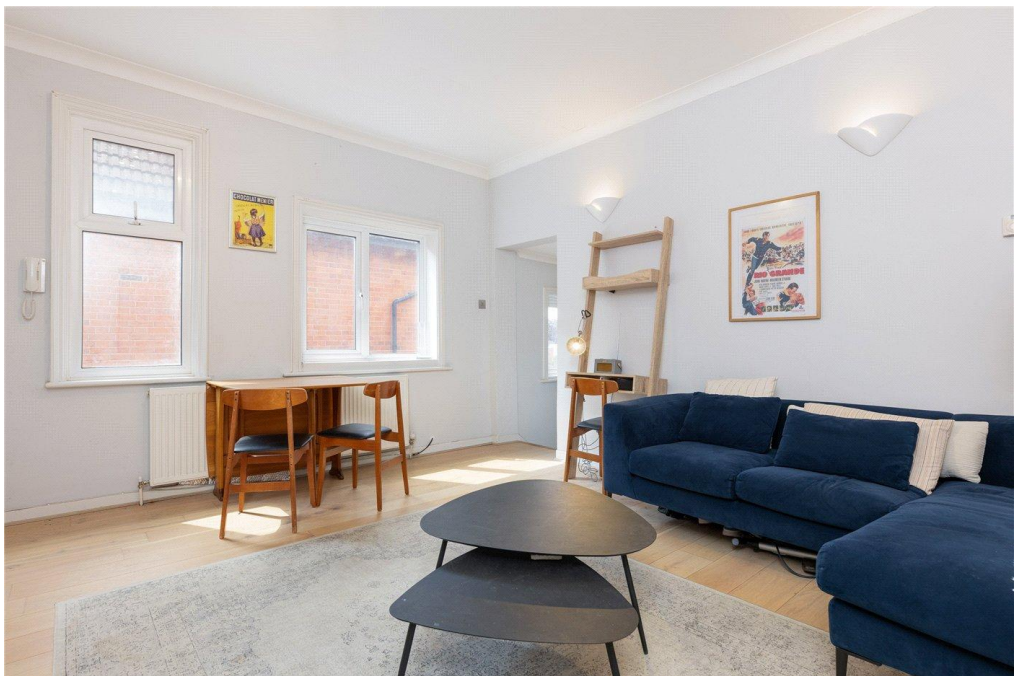
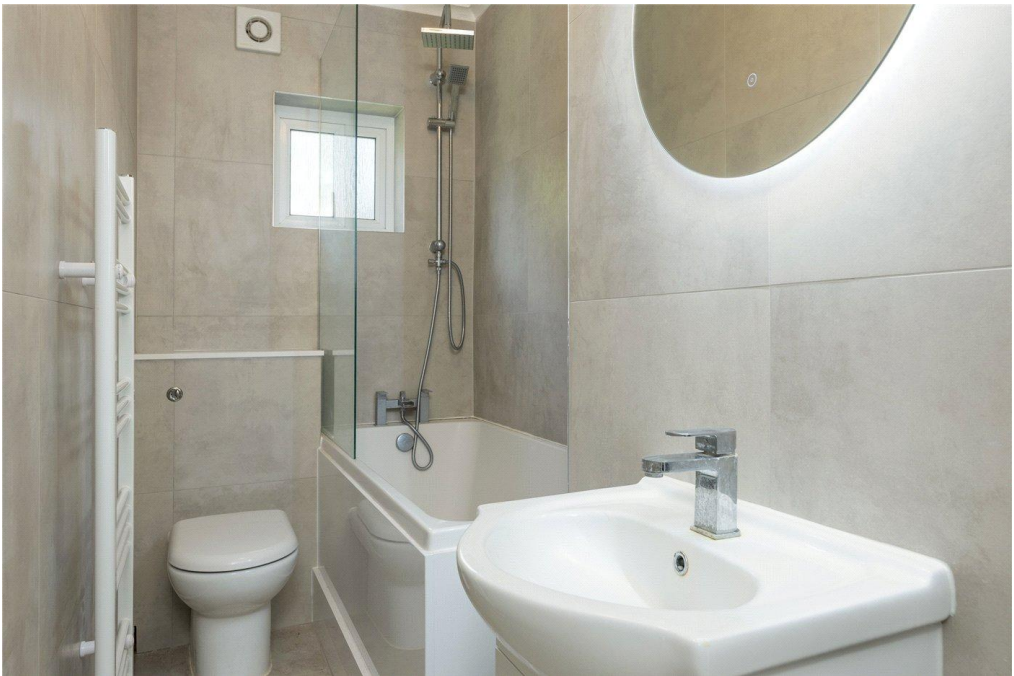
The home boasts a spacious reception room ideal for entertaining, a brand new modern kitchen with generous worktop space, a large double bedroom complete with built-in wardrobes, and a recently renovated contemporary bathroom. Residents also enjoy access to a beautifully maintained communal garden at the rear—perfect for relaxing outdoors.

The property is ideally located in a vibrant and well-connected part of South West London, benefitting from easy access to the amenities of both Putney and Southfields. Nearby, you'll find a variety of independent cafés, shops, restaurants, and supermarkets, while the expansive green spaces of Putney Heath, Wimbledon Common, and Richmond Park offer exceptional opportunities for outdoor leisure.



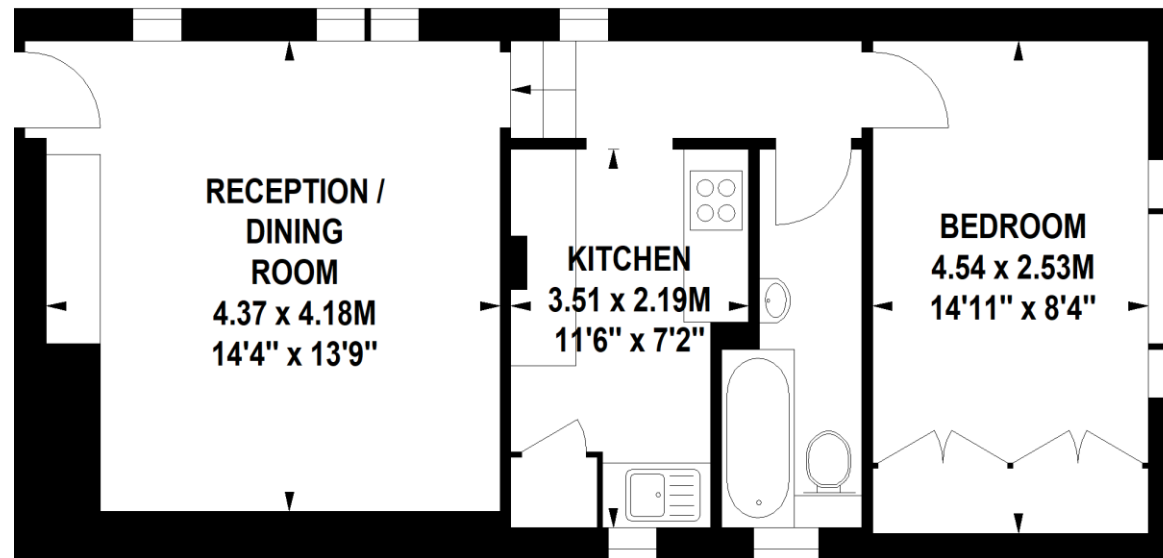
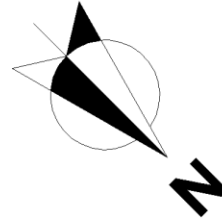
LOCATION

Located on West Hill, within 0.5 miles of East Putney Tube Station and 0.6 miles from Putney mainline which both offer excellent transport links into the City. There are also convenient bus routes to Clapham Junction, Victoria and the City plus many bus routes into Putney, the West End, Kingston and Wimbledon. The A3 also offers easy access by road out of London. The large green open spaces of Putney Heath and Wimbledon Common are close by.



West Hill, SW15

Approximate Gross Internal Area 46.6 sq.m / 502 sq. ft



Second Floor

Winkworth

020 8788 9295

Floor Plan produced by Moxie Floorplans®

Southfields | 020 8877 1000 | southfields@winkworth.co.uk

[winkworth.co.uk](https://www.winkworth.co.uk)

Winkworth wishes to inform prospective buyers and tenants that these particulars are a guide and act as information only. All our details are given in good faith and believed to be correct at the time of printing but they don't form part of an offer or contract. No Winkworth employee has authority to make or give any representation or warranty in relation to this property. All fixtures and fittings, whether fitted or not are deemed removable by the vendor unless stated otherwise and room sizes are measured between internal wall surfaces, including furnishings.

Winkworth