



## TACHBROOK STREET, SW1V

£725,000

LEASEHOLD

### At a glance...

- Three Bedrooms
- Private Patio
- Eat in Kitchen
- Separate Reception Room
- Heating and Hot Water Included in Service Charge
- HMO Licence

**Winkworth**

for every step...





Score	Energy rating	Current	Potential
92+	A		
81-91	B		
69-80	C	76 C	80 C
55-68	D		
39-54	E		
21-38	F		
1-20	G		

## TACHBROOK STREET, SW1V

£725,000

LEASEHOLD

An exceptionally well presented three bedroom, split level apartment located in the heart of Pimlico. Only moments away from Pimlico station as well as the heart of Pimlico itself with it's numerous boutiques, bars and coffee shops; as well as the historic Tachbrook Street Market and the St James the Less Church; a grade one listed building of cultural and architectural significance.

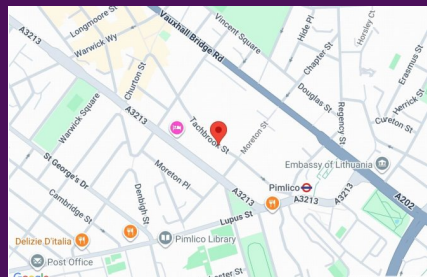
You enter the property through a spacious, private raised ground floor garden; which is perfect for lounging in the sun, enjoying summer barbeques and entertaining guests.

Entering into a very bright and modern kitchen with lots of storage, cupboards and counter space as well as ample room for dining table and chairs. Wide, double glazed windows ensure that the kitchen is filled with natural light which gives it a great atmosphere.

For illustration purposes only. Not to scale.

All measurements are taken and shown at floor level.

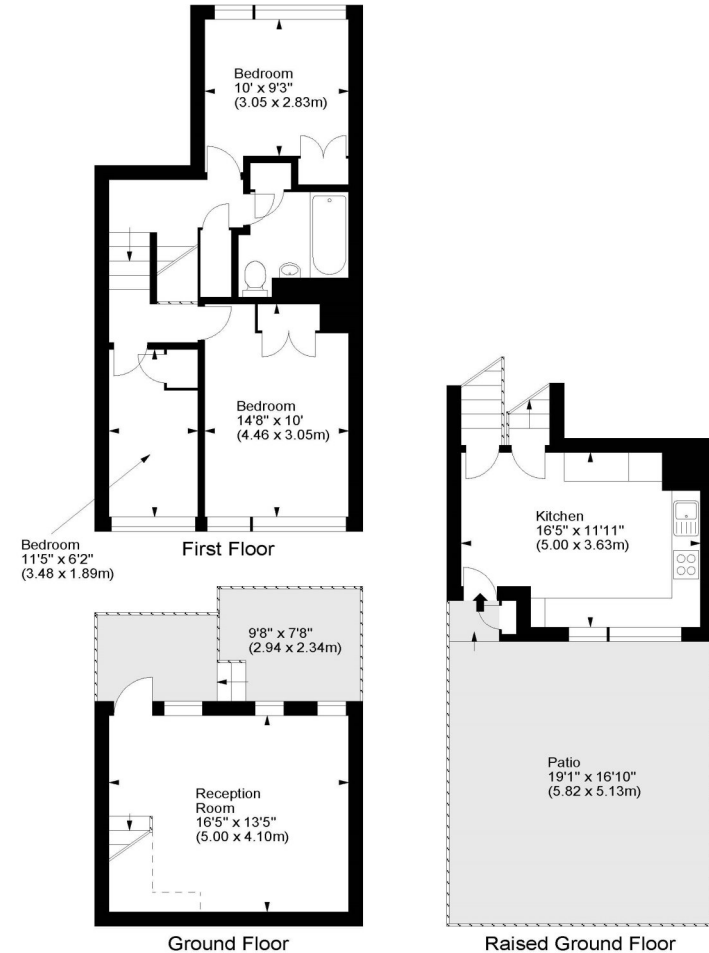
www.r3photography.co.uk © Photography / Floor Plans / Lease Plans / EPCs



winkworth wishes to inform prospective buyers and tenants that these particulars are a guide and act as information only. All our details are given in good faith and believed to be correct at the time of printing but they don't form part of an offer or contract. No winkworth employee has authority to make or give any representation or warranty in relation to this property. All fixtures and fittings, whether fitted or not are deemed removable by the vendor unless stated otherwise and room sizes are measured between internal wall surfaces - including fireplaces.

## Stourhead House, SW1

Approx. Gross Internal Area  
911 Sq Ft - 84.63 Sq M



For illustration purposes only. Not to scale.  
All measurements are taken and shown at floor level.  
www.r3photography.co.uk © Photography / Floor Plans / Lease Plans / EPCs



Pimlico & Westminster

020 7828 1786

pimlico@winkworth.co.uk

winkworth.co.uk/pimlico-westminster

**Winkworth**

for every step...