



FLAT 3, CHESTERTON ROAD, LONDON, W10
£455 PER WEEK UNFURNISHED

A BRIGHT TWO BEDROOM APARTMENT TO RENT IN W10

North Kensington | 020 7792 5000 | northkensington@winkworth.co.uk

Winkworth

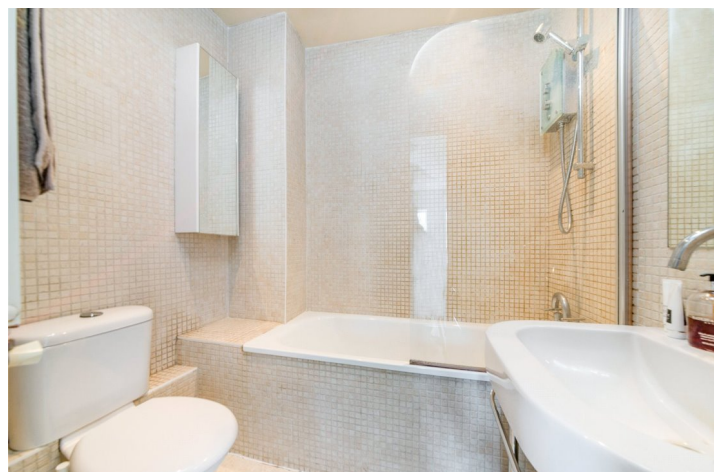
for every step...

winkworth.co.uk



DESCRIPTION:

A top floor two bedroom split level apartment located on one of the most desirable streets in Ladbroke Grove. The flat benefits from abundance of natural light throughout. It comprises of new modern fitted kitchen which is semi open to the reception room, spacious master bedroom with plenty of storage and second smaller double. The flat comes unfurnished and is available early July. Ladbroke Grove tube station (Hammersmith & City Line and Circle Line) is only about 5 minutes walk as are cafes, bars and shops on Portobello Road. EPC Rating E



Winkworth

for every step...

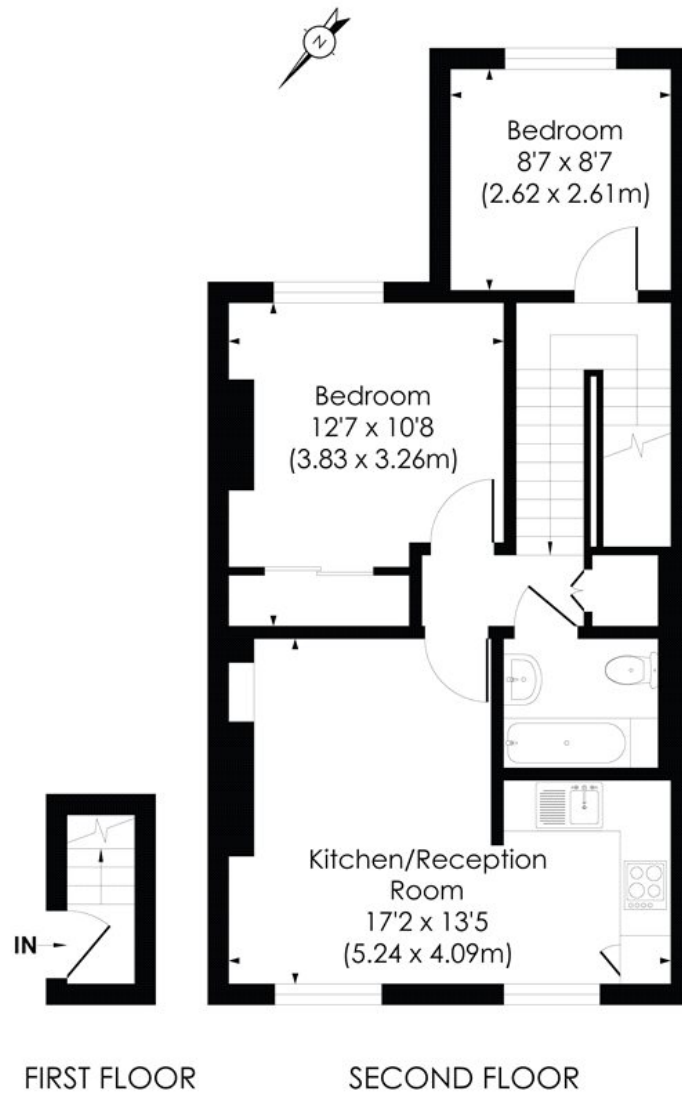
Winkworth

for every step...

winkworth.co.uk

CHESTERTON ROAD, W10

Approx. Gross Internal Floor Area
550 Sq. ft/51.11 Sq. m

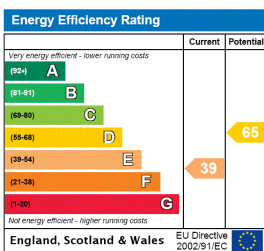


© Pixangle Property Marketing Ltd. info@pixangle.com Tel: 0208 870 2118

pixangle
PROPERTY MARKETING

This floor plan has been prepared for the purpose of illustration only in accordance with the latest RICS code of measuring practice and is not to scale. All measurements and areas are approximate and whilst every effort has been made to ensure the accuracy of the plan contained here, no responsibility is taken for any error, omission or misstatement.

This floorplan is for illustration purposes only and is not to scale. The position and size of doors, windows, appliances and other features are approximate.



North Kensington | 020 7792 5000 | northkensington@winkworth.co.uk

Winkworth

for every step...

winkworth.co.uk

Winkworth wishes to inform prospective buyers and tenants that these particulars are a guide and act as information only. All our details are given in good faith and believed to be correct at the time of printing but they don't form part of an offer or contract. No Winkworth employee has authority to make or give any representation or warranty in relation to this property. All fixtures and fittings, whether fitted or not are deemed removable by the vendor unless stated otherwise and room sizes are measured between internal wall surfaces, including furnishings.