



Hereford Road, W2

£650 per week (£2,816.66 PCM) *Furnished*

1  0  1 

A BEAUTIFULLY PRESETNED, BRIGHT AND AIRY ONE BEDROOM FLAT ON THE SECOND FLOOR OF THIS PERIOD BUILDING (WITH LIFT).



Notting Hill Lettings

0207 727 3227 | nottinghill@winkworth.co.uk

Winkworth

for every step...



A beautifully presented, bright and airy one bedroom flat on the second floor of this period building (with lift). The property comprises: L-shaped living room with wood floors, open plan fully fitted kitchen, spacious bedroom at the back of the property and immaculate shower room. The property is offered furnished and short let by separate negotiation.

Utilities:

Electricity – Mains

Water – Mains

Sewerage – Mains

Heating – Gas

Broadband <https://checker.ofcom.org.uk/en-gb/broadband-coverage>

Mobile Coverage <https://checker.ofcom.org.uk/en-gb/mobile-coverage>





LOCATION:

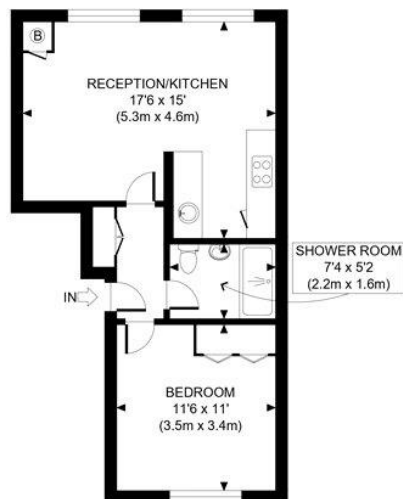
Hereford Road is a popular, imposing residential street running north from Westbourne Grove, with a host of shops and restaurants moments away and within easy walking distance of the many transport links of both Notting Hill Gate and Queensway.

MATERIAL INFO

Deposit: £3,250

Holding Deposit: £650

Council Tax Band: D (Westminster)



SECOND FLOOR
GROSS INTERNAL
FLOOR AREA 446 SQ FT

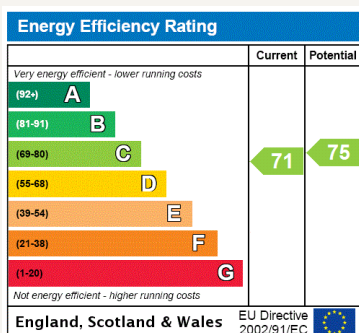


APPROX. GROSS INTERNAL FLOOR AREA: 446 SQ FT/ 41 SQM

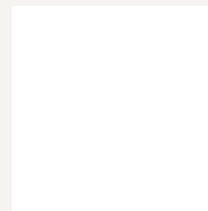
Winkworth

This plan is for illustrative purposes only and should be used as such by any prospective client. Whilst every attempt has been made to ensure the accuracy of the Floor Plan contained here, measurements of the doors, windows, rooms and any other items are approximate and no responsibility is taken for any errors, omissions, or misstatement. The services, systems and appliances shown have not been tested and no guarantee as to the operability or efficiency can be given.

PROPERTY PHOTO PLANS © 2018



For more information, scan the QR code or visit the link below



<https://www.winkworth.co.uk/rent/property/NHL200052>

Where no figures are shown, we have been unable to ascertain the information. All figures that are shown were correct at the time of printing.

Notting Hill Lettings

0207 727 3227 | nottinghill@winkworth.co.uk

Winkworth

for every step...

Winkworth wishes to inform prospective buyers and tenants that these particulars are a guide and act as information only. All our details are given in good faith and believed to be correct at the time of printing but they don't form part of an offer or contract. No Winkworth employee has authority to make or give any representation or warranty in relation to this property. All fixtures and fittings, whether fitted or not are deemed removable by the vendor unless stated otherwise and room sizes are measured between internal wall surfaces, including furnishings.