

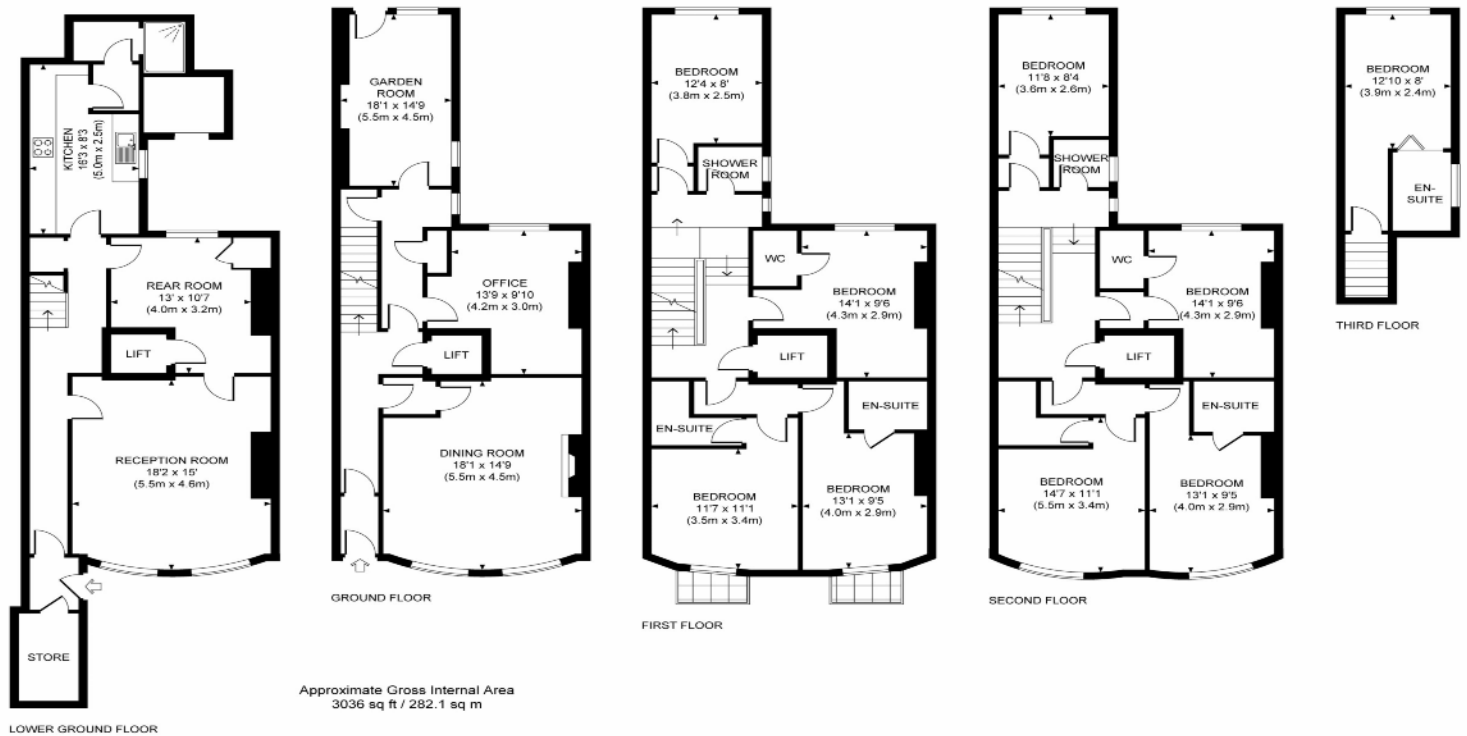
See things differently



This impressive Regency residence is positioned proudly in the prominent location of Lansdowne Place. This rare property is currently being used as a guest house and the owner is happy to sell as a going concern. However there are other possibilities subject to obtaining the relevant planning permission. This period property is arranged over four floors, which consists of 10 bedrooms, several with en suite bathrooms. Two main reception rooms at the front of the property, which are on the ground and basement levels, with the garden room to the rear of the property. The basement level has its own entrance, with kitchen and shower room to the rear. This property also benefits from a west facing garden and first floor balconies .

The real perks from this Lansdowne Place property come in the form of the marvellous location that is undoubtedly sought after, with the sea at the bottom of the road with Hove Lawns to enjoy and central Hove at the top of Lansdowne Place will all its local amenities you are in the heart of Hove. Grasp this truly rare opportunity to acquire a whole house in this truly wonderful location.





At a glance...

- Regency house
- Ten bedrooms
- Period features
- Central Hove location
- West facing garden
- Two reception rooms
- Two entrances
- First floor balconies
- Scope to modernise



Council Tax - F

Tenure - Freehold

Under the property Misdescriptions Act these particulars are intended as a guide and act as information only. They give a fair overall description for the guidance of potential purchasers or tenants but not constitute an offer or part of a contract. All details and approximate measurements are given in good faith and are believed to be correct at the time of printing, but any potential purchasers or tenants should not rely on the statements or representations of fact but must satisfy themselves by inspection or otherwise as to their correctness. No employee of Winkworth has authority to make or give any representation or warranty to this property.