



BARRY ROAD, EAST DULWICH, LONDON, SE22
£550,000 LEASEHOLD

STUNNING 2-BEDROOM FLAT WITH SEPARATE STUDY ON BARRY ROAD, EAST DULWICH

Dulwich | 020 8299 2722 | dulwich@winkworth.co.uk

Tenure Leasehold 146 years Lease | Council Tax Band C – London Borough of Southwark | EPC Rating E

winkworth.co.uk

Winkworth

See things differently



DESCRIPTION:

This spacious and beautifully presented two-bedroom flat is set across the top two floors of a charming, detached, double-fronted house on Barry Road in the heart of East Dulwich. The property offers a blend of modern convenience and period charm. Recently refurbished to a high standard, the flat boasts a contemporary kitchen equipped with modern appliances and a stylish, newly renovated bathroom. The property includes two generous double bedrooms and the added benefit of a separate study—perfect for working from home or additional storage. Flooded with natural light, this split-level home offers ample living space, while its prime location provides easy access to the vibrant shops, cafes, and restaurants of Lordship Lane, as well as excellent transport links to central London. A perfect choice for professionals, two friends or a small family looking to enjoy the vibrant East Dulwich lifestyle.

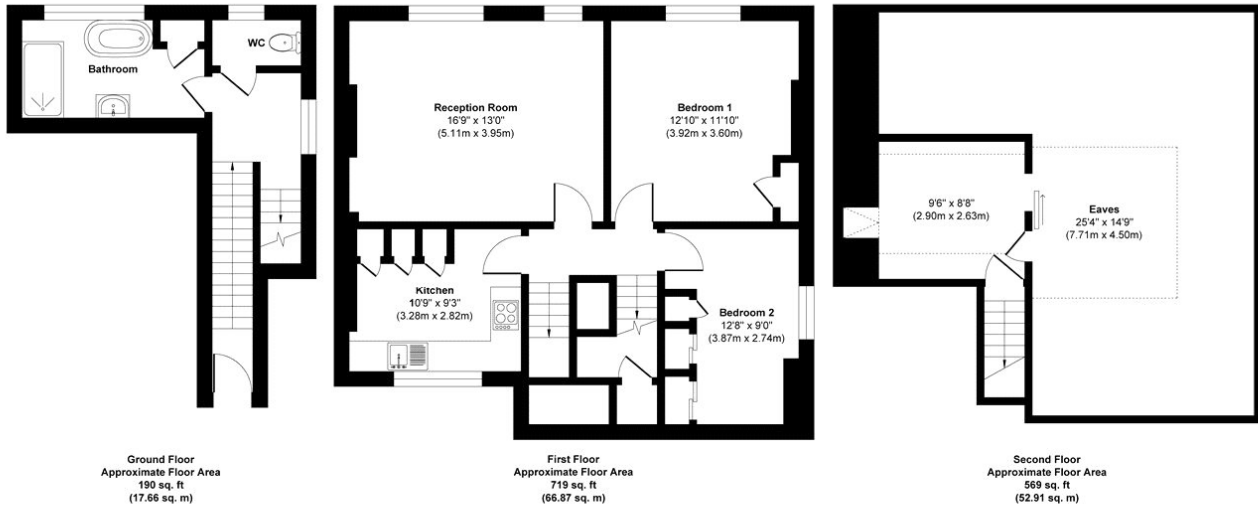
AT A GLANCE

- Split-Level
- Two-Bedroom Flat
- Recently Refurbished
- Study
- Prime East Dulwich location
- Excellent Transport Links





Barry Road

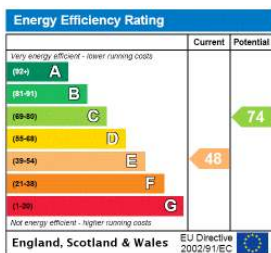


Approx. Gross Internal Floor Area 1478 sq. ft / 137.44 sq. m

Illustration for identification purposes only, measurements are approximate, not to scale.

Produced by Elements Property

This floorplan is for illustration purposes only and is not to scale. The position and size of doors, windows, appliances and other features are approximate.



Dulwich | 020 8299 2722 | dulwich@winkworth.co.uk

Winkworth

winkworth.co.uk

See things differently

Winkworth wishes to inform prospective buyers and tenants that these particulars are a guide and act as information only. All our details are given in good faith and believed to be correct at the time of printing but they don't form part of an offer or contract. No Winkworth employee has authority to make or give any representation or warranty in relation to this property. All fixtures and fittings, whether fitted or not are deemed removable by the vendor unless stated otherwise and room sizes are measured between internal wall surfaces, including furnishings.



BARRY ROAD, EAST DULWICH, LONDON, SE22
£550,000 LEASEHOLD

STUNNING 2-BEDROOM FLAT WITH SEPARATE STUDY ON BARRY ROAD, EAST DULWICH

Dulwich | 020 8299 2722 | dulwich@winkworth.co.uk

Tenure Leasehold 146 years Lease | Council Tax Band C – London Borough of Southwark | EPC Rating E

winkworth.co.uk

Winkworth

See things differently



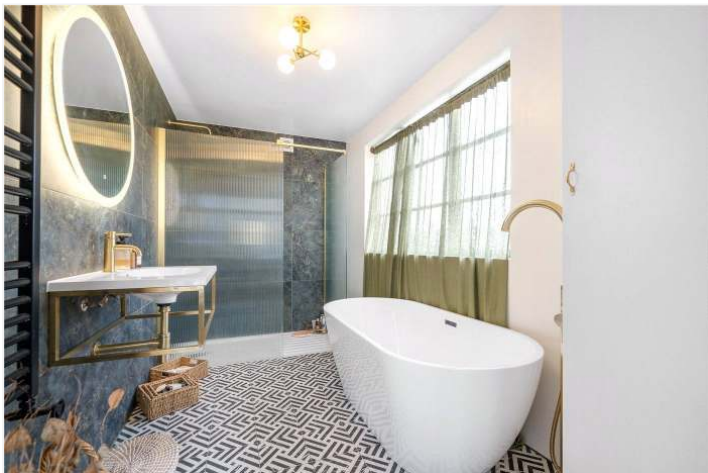
DESCRIPTION:

This spacious and beautifully presented two-bedroom flat is set across the top two floors of a charming, detached, double-fronted house on Barry Road in the heart of East Dulwich. The property offers a blend of modern convenience and period charm. Recently refurbished to a high standard, the flat boasts a contemporary kitchen equipped with modern appliances and a stylish, newly renovated bathroom. The property includes two generous double bedrooms and the added benefit of a separate study—perfect for working from home or additional storage. Flooded with natural light, this split-level home offers ample living space, while its prime location provides easy access to the vibrant shops, cafes, and restaurants of Lordship Lane, as well as excellent transport links to central London. A perfect choice for professionals, two friends or a small family looking to enjoy the vibrant East Dulwich lifestyle.

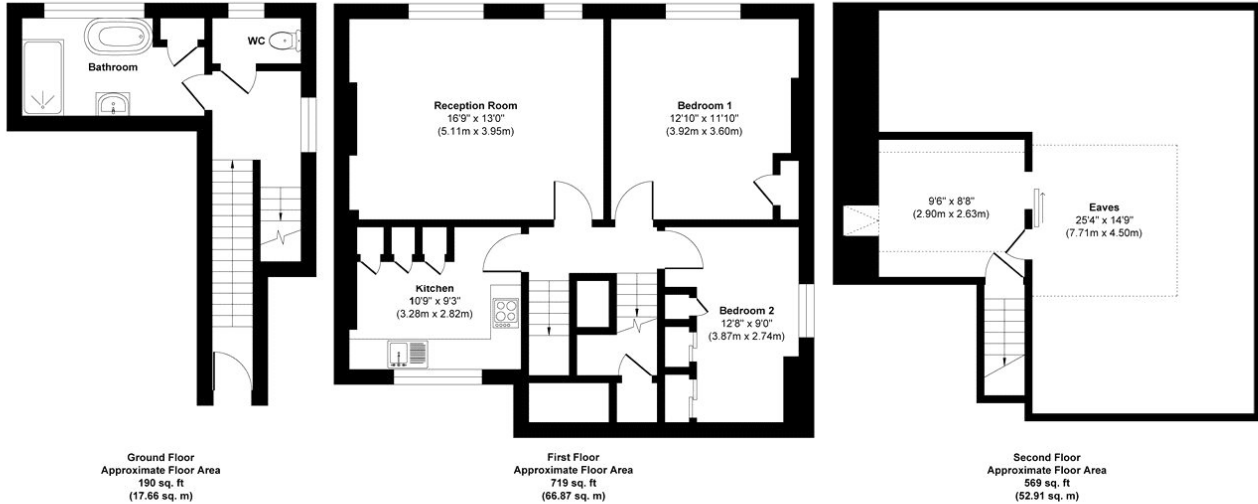
AT A GLANCE

- Split-Level
- Two-Bedroom Flat
- Recently Refurbished
- Study
- Prime East Dulwich location
- Excellent Transport Links





Barry Road

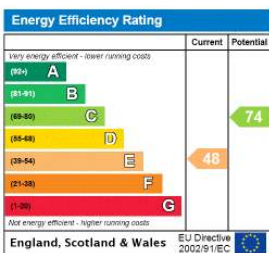


Approx. Gross Internal Floor Area 1478 sq. ft / 137.44 sq. m

Illustration for identification purposes only, measurements are approximate, not to scale.

Produced by Elements Property

This floorplan is for illustration purposes only and is not to scale. The position and size of doors, windows, appliances and other features are approximate.



Dulwich | 020 8299 2722 | dulwich@winkworth.co.uk

Winkworth

winkworth.co.uk

See things differently

Winkworth wishes to inform prospective buyers and tenants that these particulars are a guide and act as information only. All our details are given in good faith and believed to be correct at the time of printing but they don't form part of an offer or contract. No Winkworth employee has authority to make or give any representation or warranty in relation to this property. All fixtures and fittings, whether fitted or not are deemed removable by the vendor unless stated otherwise and room sizes are measured between internal wall surfaces, including furnishings.



BARRY ROAD, EAST DULWICH, LONDON, SE22
£550,000 LEASEHOLD

STUNNING 2-BEDROOM FLAT WITH SEPARATE STUDY ON BARRY ROAD, EAST DULWICH

Dulwich | 020 8299 2722 | dulwich@winkworth.co.uk

Tenure Leasehold 146 years Lease | Council Tax Band C – London Borough of Southwark | EPC Rating E

winkworth.co.uk

Winkworth

See things differently



DESCRIPTION:

This spacious and beautifully presented two-bedroom flat is set across the top two floors of a charming, detached, double-fronted house on Barry Road in the heart of East Dulwich. The property offers a blend of modern convenience and period charm. Recently refurbished to a high standard, the flat boasts a contemporary kitchen equipped with modern appliances and a stylish, newly renovated bathroom. The property includes two generous double bedrooms and the added benefit of a separate study—perfect for working from home or additional storage. Flooded with natural light, this split-level home offers ample living space, while its prime location provides easy access to the vibrant shops, cafes, and restaurants of Lordship Lane, as well as excellent transport links to central London. A perfect choice for professionals, two friends or a small family looking to enjoy the vibrant East Dulwich lifestyle.

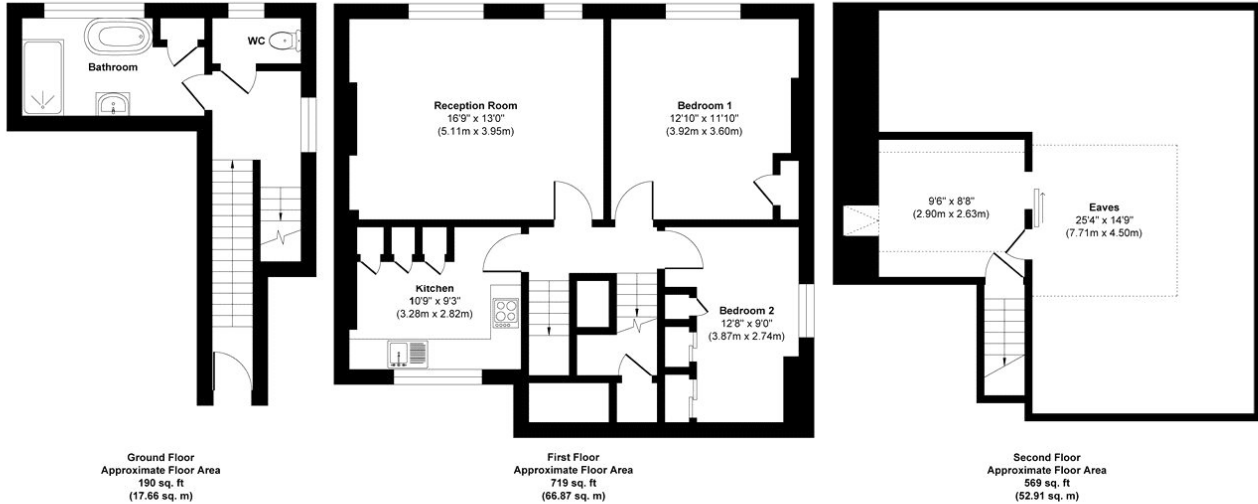
AT A GLANCE

- Split-Level
- Two-Bedroom Flat
- Recently Refurbished
- Study
- Prime East Dulwich location
- Excellent Transport Links





Barry Road

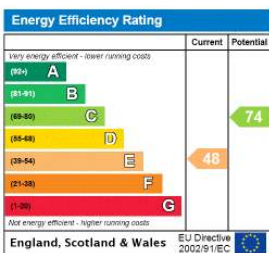


Approx. Gross Internal Floor Area 1478 sq. ft / 137.44 sq. m

Illustration for identification purposes only, measurements are approximate, not to scale.

Produced by Elements Property

This floorplan is for illustration purposes only and is not to scale. The position and size of doors, windows, appliances and other features are approximate.



Dulwich | 020 8299 2722 | dulwich@winkworth.co.uk

Winkworth

winkworth.co.uk

See things differently

Winkworth wishes to inform prospective buyers and tenants that these particulars are a guide and act as information only. All our details are given in good faith and believed to be correct at the time of printing but they don't form part of an offer or contract. No Winkworth employee has authority to make or give any representation or warranty in relation to this property. All fixtures and fittings, whether fitted or not are deemed removable by the vendor unless stated otherwise and room sizes are measured between internal wall surfaces, including furnishings.



BARRY ROAD, EAST DULWICH, LONDON, SE22
£550,000 LEASEHOLD

STUNNING 2-BEDROOM FLAT WITH SEPARATE STUDY ON BARRY ROAD, EAST DULWICH

Dulwich | 020 8299 2722 | dulwich@winkworth.co.uk

Tenure Leasehold 146 years Lease | Council Tax Band C – London Borough of
Southwark | EPC Rating E

winkworth.co.uk

Winkworth

See things differently



DESCRIPTION:

This spacious and beautifully presented two-bedroom flat is set across the top two floors of a charming, detached, double-fronted house on Barry Road in the heart of East Dulwich. The property offers a blend of modern convenience and period charm. Recently refurbished to a high standard, the flat boasts a contemporary kitchen equipped with modern appliances and a stylish, newly renovated bathroom. The property includes two generous double bedrooms and the added benefit of a separate study—perfect for working from home or additional storage. Flooded with natural light, this split-level home offers ample living space, while its prime location provides easy access to the vibrant shops, cafes, and restaurants of Lordship Lane, as well as excellent transport links to central London. A perfect choice for professionals, two friends or a small family looking to enjoy the vibrant East Dulwich lifestyle.

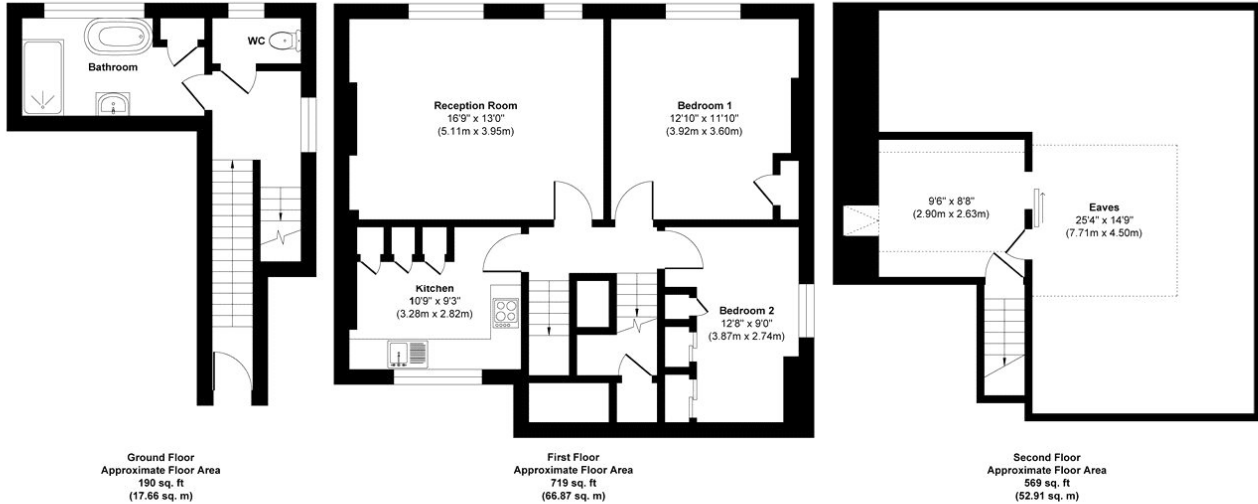
AT A GLANCE

- Split-Level
- Two-Bedroom Flat
- Recently Refurbished
- Study
- Prime East Dulwich location
- Excellent Transport Links





Barry Road

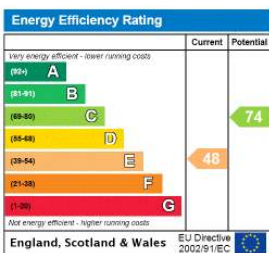


Approx. Gross Internal Floor Area 1478 sq. ft / 137.44 sq. m

Illustration for identification purposes only, measurements are approximate, not to scale.

Produced by Elements Property

This floorplan is for illustration purposes only and is not to scale. The position and size of doors, windows, appliances and other features are approximate.



Dulwich | 020 8299 2722 | dulwich@winkworth.co.uk

Winkworth

winkworth.co.uk

See things differently

Winkworth wishes to inform prospective buyers and tenants that these particulars are a guide and act as information only. All our details are given in good faith and believed to be correct at the time of printing but they don't form part of an offer or contract. No Winkworth employee has authority to make or give any representation or warranty in relation to this property. All fixtures and fittings, whether fitted or not are deemed removable by the vendor unless stated otherwise and room sizes are measured between internal wall surfaces, including furnishings.



BARRY ROAD, EAST DULWICH, LONDON, SE22
£550,000 LEASEHOLD

STUNNING 2-BEDROOM FLAT WITH SEPARATE STUDY ON BARRY ROAD, EAST DULWICH

Dulwich | 020 8299 2722 | dulwich@winkworth.co.uk

Tenure Leasehold 146 years Lease | Council Tax Band C – London Borough of Southwark | EPC Rating E

winkworth.co.uk

Winkworth

See things differently



DESCRIPTION:

This spacious and beautifully presented two-bedroom flat is set across the top two floors of a charming, detached, double-fronted house on Barry Road in the heart of East Dulwich. The property offers a blend of modern convenience and period charm. Recently refurbished to a high standard, the flat boasts a contemporary kitchen equipped with modern appliances and a stylish, newly renovated bathroom. The property includes two generous double bedrooms and the added benefit of a separate study—perfect for working from home or additional storage. Flooded with natural light, this split-level home offers ample living space, while its prime location provides easy access to the vibrant shops, cafes, and restaurants of Lordship Lane, as well as excellent transport links to central London. A perfect choice for professionals, two friends or a small family looking to enjoy the vibrant East Dulwich lifestyle.

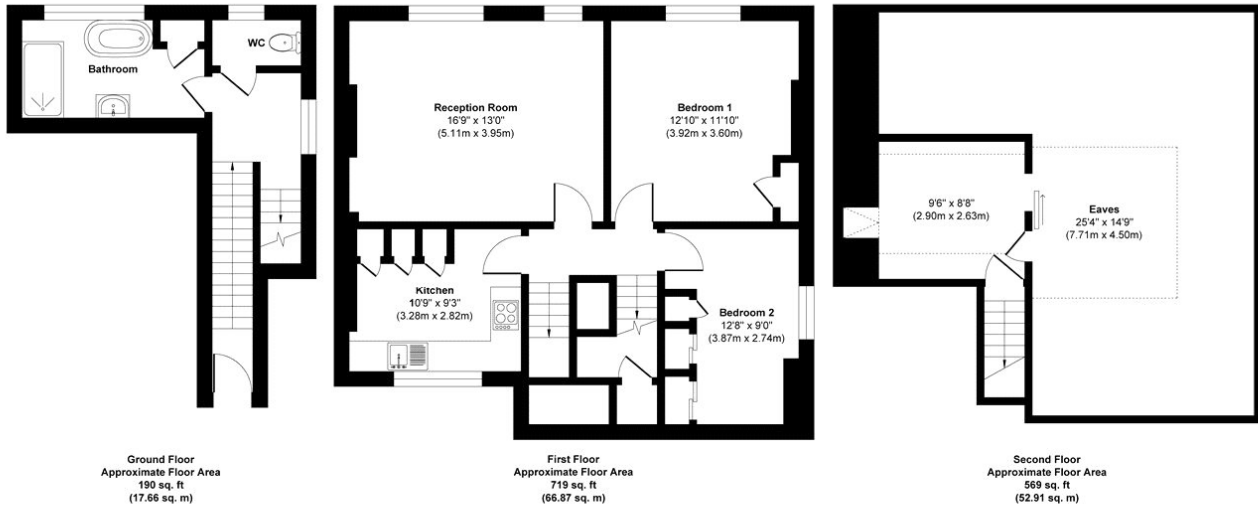
AT A GLANCE

- Split-Level
- Two-Bedroom Flat
- Recently Refurbished
- Study
- Prime East Dulwich location
- Excellent Transport Links





Barry Road

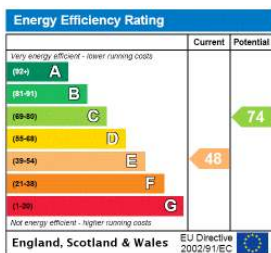


Approx. Gross Internal Floor Area 1478 sq. ft / 137.44 sq. m

Illustration for identification purposes only, measurements are approximate, not to scale.

Produced by Elements Property

This floorplan is for illustration purposes only and is not to scale. The position and size of doors, windows, appliances and other features are approximate.



Dulwich | 020 8299 2722 | dulwich@winkworth.co.uk

Winkworth

winkworth.co.uk

See things differently

Winkworth wishes to inform prospective buyers and tenants that these particulars are a guide and act as information only. All our details are given in good faith and believed to be correct at the time of printing but they don't form part of an offer or contract. No Winkworth employee has authority to make or give any representation or warranty in relation to this property. All fixtures and fittings, whether fitted or not are deemed removable by the vendor unless stated otherwise and room sizes are measured between internal wall surfaces, including furnishings.