



## 56 SUTTON ROAD

NEWBURY BERKSHIRE RG14 1UT

A fantastic three bedroom terraced house with detached garage and driveway parking.

\*SHARED OWNERSHIP 50%\*

A fantastic three bedroom terraced house with detached garage and driveway parking.

The ground floor starts at the entrance hall with stairs to the first floor and under stairs cupboard. There is a front aspect kitchen and generous size living room with french doors opening to the rear garden.

The first floor comes with spacious master bedroom, family bathroom and two further rooms. Perfect for either a family or home workers that need an office space.

There is a private rear garden enclosed by wooden panel fencing with a patio area for entertaining. The property benefits from a driveway for parking and also comes with a garage in separate block.



**Winkworth**



## AT A GLANCE

- 50% Shared ownership
- 778 sq ft/72.2 sq m
- Living Room
- Kitchen
- Entrance Hallway
- Three Bedrooms
- Bathroom
- Garage
- Driveway

## UTILITIES

Gas Fired Central Heating  
Mains water and drainage

## SITUATION

The property is situated in Sutton Road, a popular residential area to the edge of Newbury town centre.

Newbury has ample shopping and leisure facilities and excellent links on the mainline to London Paddington.

## DIRECTIONS

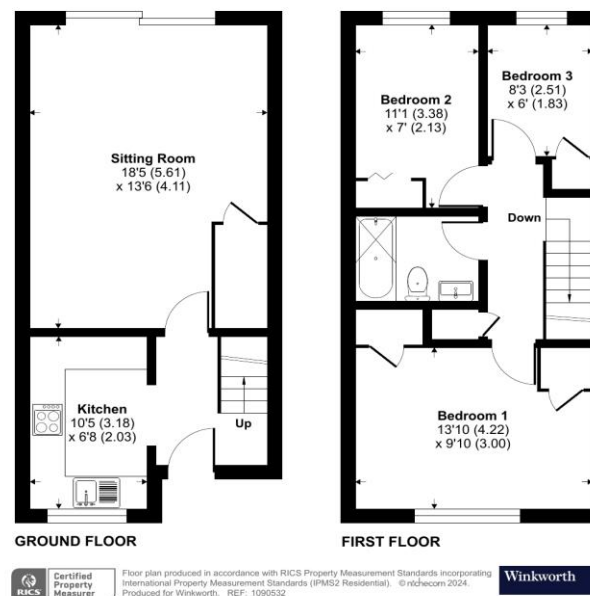
What3words///edges.froth.sober



## Sutton Road, Speen, Newbury, RG14

Approximate Area = 778 sq ft / 72.2 sq m

For identification only - Not to scale



## Newbury Office

43 Northbrook Street, Newbury, Berkshire RG14 1DT

01635 552552 | [newbury@winkworth.co.uk](mailto:newbury@winkworth.co.uk)

[winkworth.co.uk/newbury](http://winkworth.co.uk/newbury)

# Winkworth

See things differently.