



St. Faiths Road, Winchester, Hampshire, SO23 9QD

Winkworth





St. Faiths Road, Winchester, Hampshire, SO23 9QD

## Attractive Edwardian terraced house in exceedingly popular location

This charming Edwardian terraced property benefits from a superb location, close to St Catherine's Hill and less than 1 mile to the City Centre and all its amenities including the mainline train station. There are excellent local schools nearby, including St Faith's primary School and Kings' School.

On the ground floor the extensive entrance hall gives access to the sitting/dining room on the right with log burner, fitted shelving and a lovely bay window offering an abundance of natural light. A distinct area provides ample space for a dining table and chairs. Leading on from the dining area is the galley style kitchen which is fitted with ample base and eye level units together with space for appliances such as washing machine, tumble dryer and fridge freezer. Integrated appliances include gas hob and oven. Located at the rear of the property is a versatile room which could perhaps be used as a study for those who work from home. A door between the kitchen and study provides access out to the rear garden.

Stairs rise to the first floor where two double bedrooms are located. Bedroom one benefits from useful built-in storage and dual windows - one of which is a bay window - filling the room with plenty of natural light. The contemporary family bathroom with bath and shower over is also on this floor. A small flight of stairs leads to the second floor which has been converted to create a super, bright space for a third bedroom.

Outside to the rear is an enclosed garden complete with a decked area directly outside of the property, a lawn beyond and several shrubs lining the borders. Permit parking is available on the road to the front of the property.





## St. Faiths Road, Winchester, Hampshire, SO23 9QD

### Directions

Head south on Southgate Street, away from the City centre and towards St Thomas' Passage. Turn left onto Kingsgate Road then turn right onto St Faith's Rd.

### Location

St Faiths Road is one of the most desirable roads in Winchester, being positioned within the St Cross area of the city, famed for its grand period houses. It is also home to Winchester College and offers easy access to the mainline railway station (links to London Waterloo in approximately 55 minutes), with level access into the city with its high street shops, boutiques, library, coffee shops, public houses, restaurants, theatre, cinema, museums and, of course, the city's historic cathedral. The house is situated close to good local state and private schools. The lovely water meadows offer pretty walks nearby.

COUNCIL TAX: Band E, Winchester City Council.

SERVICES: Mains Gas, Electricity, Water & Drainage.

BROADBAND: Superfast Broadband Available. FTTC (Fibre to the Cabinet). Checked on Openreach May 2025.

MOBILE SIGNAL: Coverage With Certain Providers.

HEATING: Mains Gas Central Heating.

TENURE: Freehold.

EPC RATING: TBC

PARKING: Permit parking available under zone V.

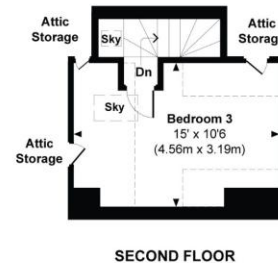
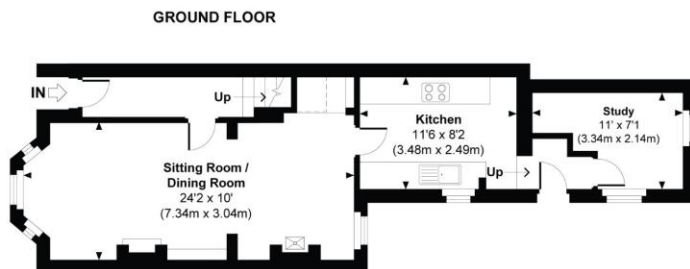
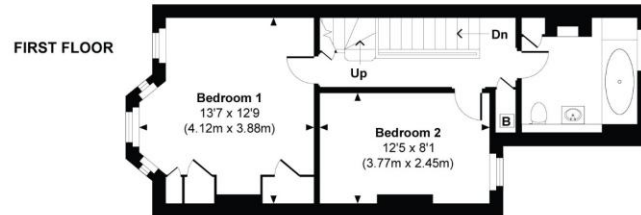
### Viewings

Strictly by appointment with Winkworth Winchester Office

[Winkworth.co.uk/winchester](https://www.winkworth.co.uk/winchester)

## St Faiths Road

Approximate Gross Internal Area  
Main House = 1086 Sq Ft / 100.89 Sq M  
(includes 64 Sq Ft / 7.80 Sq M of restricted room height)



Indicates restricted room height less than 1.5m.

© www.propertyfocus.co | Professional Property Photography & Floorplans

This floorplan is for illustrative purposes only and is not to scale. It's accuracy has been checked, but no responsibility is taken for any error, omission or misrepresentation. The size and placement of windows, doors and other features are approximate only. Dimensions and North point should be verified before making decisions reliant upon them. Measured and drawn in accordance with RICS guidelines.

### Winkworth Winchester

72 High Street, Winchester, SO23 9DA  
01962 866 777 | [winchester@winkworth.co.uk](mailto:winchester@winkworth.co.uk)

### Winkworth Country House Department

13 Charles II Street, St James's, London, SW1Y 4QU  
020 7870 4878 | [countryhouse@winkworth.co.uk](mailto:countryhouse@winkworth.co.uk)

**Winkworth**

See things differently