



Waterfront Apartments, London, W9

£550,000 *Leasehold*



Winkworth have the pleasure in offering this well-proportioned third floor one bedroom apartment, forming part of this modern purpose built block with underground parking, lift and a porter.

The apartment is offered in excellent condition, with a large principal bedroom with fitted wardrobes, a fully fitted bathroom suite and a spacious open plan kitchen reception room, with doors leading onto a southerly facing balcony with stunning views over the famous Regents Canal. Amberley Road is situated in the heart of this fashionable area, close to all the local amenities, including the local shops, cafes and the Underground Station at Westbourne Park (Approximately 0.7 Miles) Circle / Hammersmith & City Line and Warwick Avenue Underground Station Bakerloo Line (Approximately 0.7 Miles)



Winkworth Maida Vale

020 7289 1692 | maidavale@winkworth.co.uk

Winkworth

for every step...



KEY FEATURES

- One Bedroom
- One Reception Room
- One Bathroom
- Third Floor
- Balcony
- Underground Parking
- Leasehold



MATERIAL INFO

Tenure: Leasehold

Lease Expiry Date: 21/12/3013

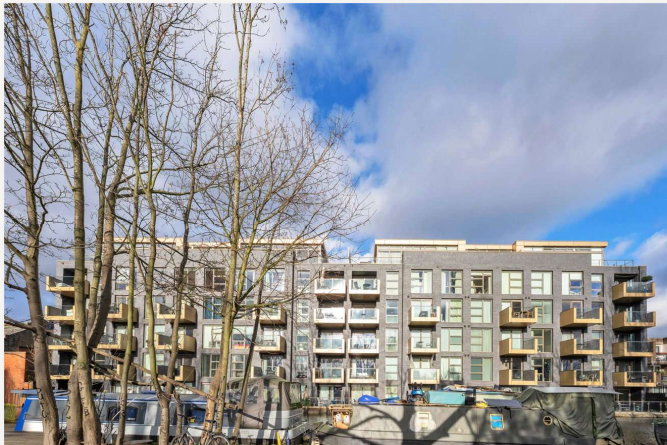
Service Charge: £2,886.84 per annum

Ground Rent: £0 Annually (subject to increase)

Council Tax Band: F

EPC rating: C





Score	Energy rating	Current	Potential
92+	A		
81-91	B		
69-80	C	79 C	79 C
55-68	D		
39-54	E		
21-38	F		
1-20	G		

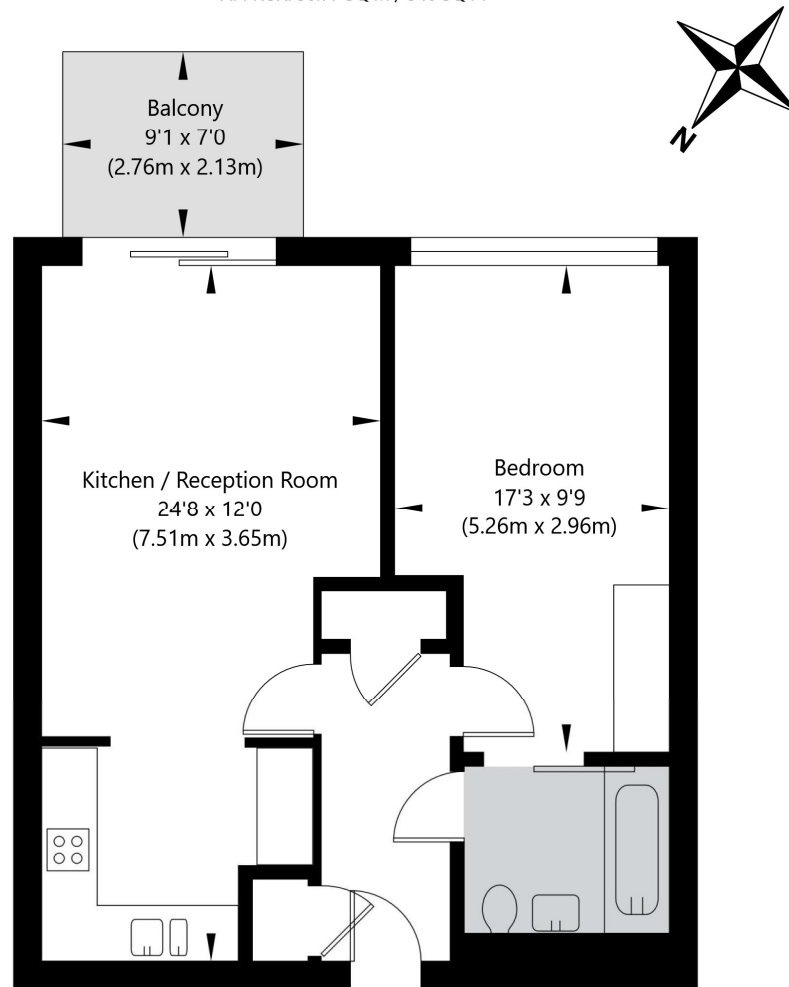
For more information, scan the QR code or visit the link below



<https://www.winkworth.co.uk/sale/property/MDV230019>

Waterfront Apartments, 82 Amberley Road, Westbourne, London W9 2JY

Third Floor
GROSS INTERNAL FLOOR AREA
APPROX. 50.77 SQ M / 546 SQ FT



APPROXIMATE GROSS INTERNAL FLOOR AREA 50.77 SQ M / 546 SQ FT
THIS FLOOR PLAN IS FOR ILLUSTRATIVE PURPOSES ONLY AND
SHOULD BE USED FOR THIS PURPOSE BY PROSPECTIVE APPLICANTS AS ITS NOT TO SCALE.

(c) AMBERSHORE PIX LIMITED / PHOTO - VIDEO - FLOOR PLANS / 0800 999 1577 / WWW.AMBERSHOREPIX.CO.UK

Where no figures are shown, we have been unable to ascertain the information. All figures that are shown were correct at the time of printing.

Winkworth Maida Vale

020 7289 1692 | maidavale@winkworth.co.uk

Winkworth

for every step...

Winkworth wishes to inform prospective buyers and tenants that these particulars are a guide and act as information only. All our details are given in good faith and believed to be correct at the time of printing but they don't form part of an offer or contract. No Winkworth employee has authority to make or give any representation or warranty in relation to this property. All fixtures and fittings, whether fitted or not are deemed removable by the vendor unless stated otherwise and room sizes are measured between internal wall surfaces, including furnishings.