



SUSSEX STREET, SW1V  
**£3,950,000 FREEHOLD**

**Winkworth**





## SUSSEX STREET, SW1V

**A wider-than-average freehold house in the heart of Pimlico offering c.3,287 square feet and with a fabulous roof terrace.**

A rare-to-market and wider than average Pimlico house offering grandeur, space and stunning roof terrace.

Positioned on arguably the best part of Sussex Street this impressive house briefly comprises 5 bedrooms, two bathrooms, ground floor reception room, bright kitchen and dining room, study, and further reception room on the top floor leading out to the split-level terrace.

The ceiling heights on the ground and 1st floors are particularly notable, as well as the aforementioned room widths, leading to incredible proportions and room sizes. The master bedroom has a large ensuite bathroom and the top floor reception room and terraces and perfect for entertaining or enjoying an evening sundowner.



The house has been enjoyed by the current owners and offers an incoming purchaser the chance to make some cosmetic changes or refurbish as they see fit.

A really exciting chance to acquire a prime SW1 freehold house located on a quiet stretch of the street and only a short walk to Victoria station, Belgravia and Elizabeth Street.





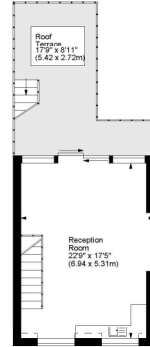
## Sussex Street, SW1



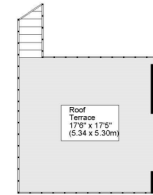
Approx. Gross Internal Area  
3154 Sq Ft - 293.01 Sq M (Including Internal Vault)  
External Vaults Area  
133 Sq Ft - 12.36 Sq M  
Total Area  
3287 Sq Ft - 305.37 Sq M



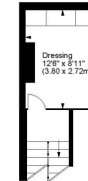
Second Floor



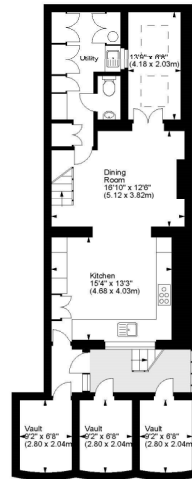
Third Floor



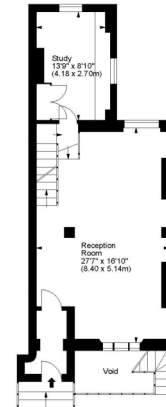
Roof Terrace



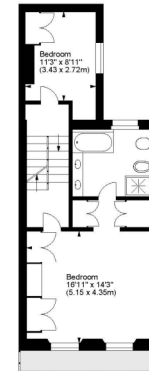
First Floor  
Half Landing



Lower Ground Floor



Ground Floor



First Floor

For illustration purposes only. Not to scale.  
All measurements are taken and shown at floor level.  
www.r3photography.co.uk © Photography / Floor Plans / Lease Plans / EPCs

