



**KHAMA ROAD, SW17**  
**£525,000 SHARE OF FREEHOLD**

## **A SPACIOUS SPLIT LEVEL THREE DOUBLE BEDROOM FLAT FOR SALE**

Tooting | 020 8767 5221 | [tooting@winkworth.co.uk](mailto:tooting@winkworth.co.uk)

**Winkworth**

for every step...

[winkworth.co.uk](http://winkworth.co.uk)



## **DESCRIPTION:**

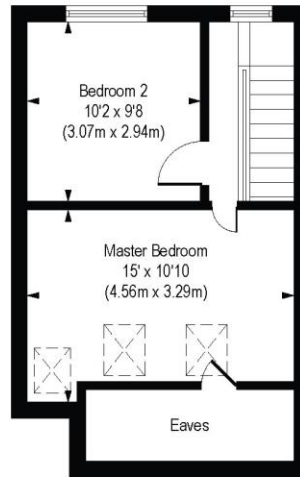
A spacious split level three double bedroom apartment in immaculate condition throughout having been recently refurbished. The accommodation sits over the first and top floor of this charming period property and features an open plan kitchen/reception room and comprises of three bedrooms and a stylish three piece family bathroom. The property retains a share of freehold and will be sold chain free.

Khama Road is extremely well located, within walking distance of Tooting Broadway Tube (Northern Line) and Tooting High Road as well as neighbouring Earlsfield, providing a huge array of local amenities including the hugely popular Selkirk pub and Tooting Market. St George's Hospital and Tooting Common are close by, as is Tooting station that offers trains direct to City Thameslink and London St Pancras.

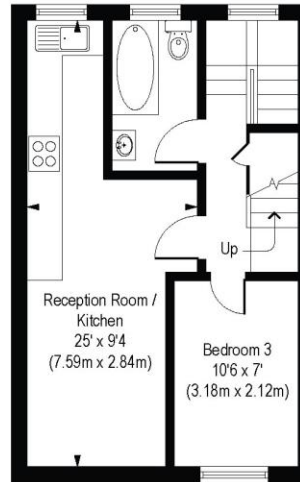


# Khama Road, SW17

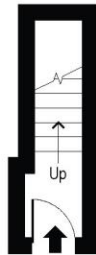
Approx. Gross Internal Floor Area 774 sq. ft / 71.94 sq. m (Including Eaves)  
 Approx. Gross Internal Floor Area 721 sq. ft / 67.01 sq. m (Excluding Eaves)



Second Floor  
 Gross Internal  
 Floor Area 359 sq ft



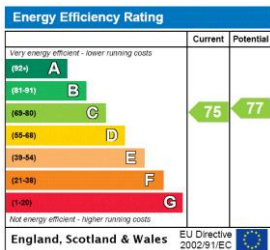
First Floor  
 Gross Internal  
 Floor Area 381 sq ft



Ground Floor  
 Gross Internal  
 Floor Area 34 sq ft

COMPLIANT WITH RICS CODE OF MEASURING PRACTICE. Floorplan is for illustrative purposes only and is not to scale. Every attempt has been made to ensure the accuracy of the floorplan shown, however all measurements, fixtures, fittings and data shown are an approximate interpretation for illustrative purposes only. Liability for errors, omissions or mis-statement through negligence or otherwise is hereby excluded.

This floorplan is for illustration purposes only and is not to scale. The position and size of doors, windows, appliances and other features are approximate.



Tooting | 020 8767 5221 | tooting@winkworth.co.uk



for every step...

winkworth.co.uk

Winkworth wishes to inform prospective buyers and tenants that these particulars are a guide and act as information only. All our details are given in good faith and believed to be correct at the time of printing but they don't form part of an offer or contract. No Winkworth employee has authority to make or give any representation or warranty in relation to this property. All fixtures and fittings, whether fitted or not are deemed removable by the vendor unless stated otherwise and room sizes are measured between internal wall surfaces, including furnishings.