



GAYFORD ROAD, LONDON, W12

£1,300,000 FREEHOLD

A TRULY STUNNING AND SYMPATHETICALLY RESTORED
FOUR BEDROOM FAMILY HOME LOCATED IN THE
POPULAR WENDELL PARK AREA OF SHEPHERDS BUSH

Shepherds Bush | 020 8735 3266 | shepherdsbush@winkworth.co.uk

Winkworth

for every step...

A member of  OnTheMarket.com

[winkworth.co.uk/shepherds-bush](https://www.winkworth.co.uk/shepherds-bush)



DESCRIPTION:

This stunning Victorian four-bedroom family home is flooded with natural light and has been meticulously designed and beautifully refurbished by the current owners to create a modern and stylish property.

Designed with entertaining in mind the ground floor boasts a fabulous open double reception room with an attractive period style fireplace with coal effect gas fire, leading onto the stunning 18' x 15' kitchen / family room. The kitchen provides an abundance of natural light and bi-folding doors which lead onto the private garden perfect for outside entertaining and family fun.

On the first floor are three bedrooms a generous & beautiful family bathroom with roll top bath & separate walk-in shower room. With A further bedroom, shower room and study with double doors leading on to a flat roof are provided on the second floor and there is ample storage provided throughout.

LOCATION:

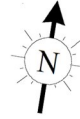
Gayford Road is a sought-after road in Wendell Park area as is moments away from the ever-popular Askew Road with its trendy cafes and deli's. The area is well served by public transport with the closest tube station being Stamford brook district line. For the families it is also within the catchment area for several of outstanding nurseries and schools, including Stepping Stones, Willow Tree, The Good Shepherd Primary School and Wendell Park Primary.



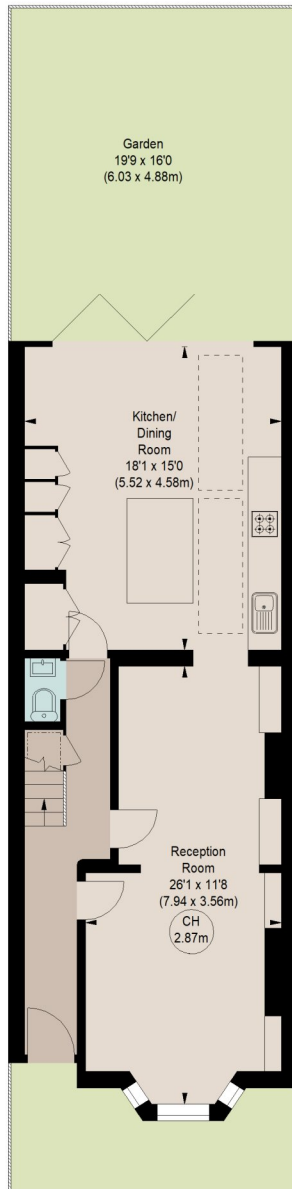


GAYFORD ROAD, W12

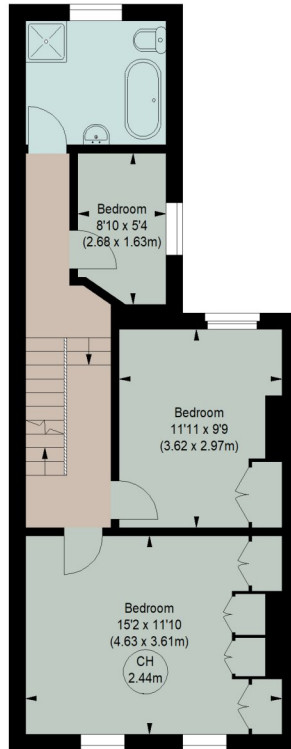
Approximate gross internal area
1624 sq ft / 150.87 sq m
(Including Eaves Storage)
Eaves Storage
78 sq ft / 7.25 sq m



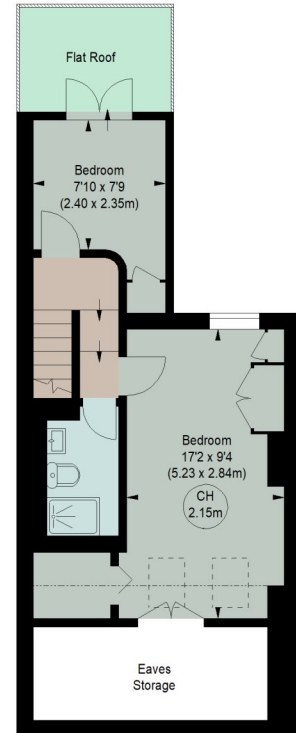
Key :
CH - Ceiling Height



GROUND FLOOR
(61.75 m²)



FIRST FLOOR
(48.46 m²)



SECOND FLOOR
(40.69 m²)

Illustration For Identification Purposes Only.
All measurements and areas are approximate, not to scale.

Shepherds Bush | 020 8735 3266 | shepherdsbush@winkworth.co.uk



winkworth.co.uk/shepherds-bush

for every step...