



**VANBRUGH TERRACE, BLACKHEATH, LONDON, SE3**  
**£2,600 PER MONTH FURNISHED, PART FURNISHED**

**DESCRIPTION:**

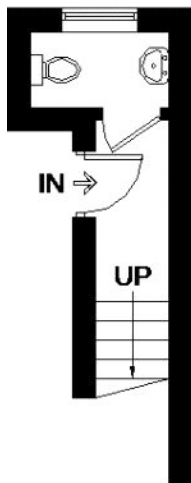
A beautiful two bedroom flat in an exceptional Heath fronting location close to Blackheath Village and Greenwich Park. Offered on a part/furnished basis and available from 6th November 2025, your viewing is recommended.

**Blackheath** | 0208 8520999 | [blackheath@winkworth.co.uk](mailto:blackheath@winkworth.co.uk)

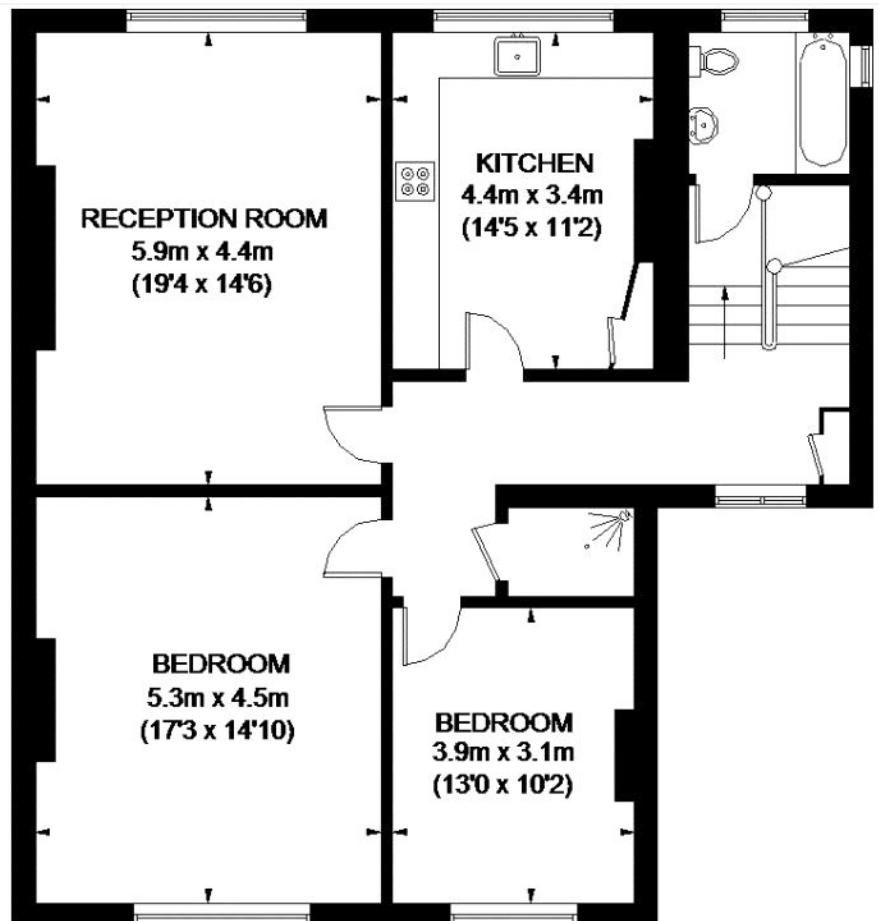
# VANBRUGH TERRACE

APPROXIMATE GROSS INTERNAL AREA  
 FIRST FLOOR = 1130 SQ. FT. (105 SQ. M.)  
 SECOND FLOOR = 58 SQ. FT. (5.4 SQ. M.)  
 TOTAL = 1188 SQ. FT. (110.4 SQ. M.)

This plan is for layout guidance only. Not drawn to scale unless stated. Windows and door openings are approximate. Whilst every care is taken in the preparation of this plan, please check all dimensions, shapes and compass bearings before making any decisions reliant upon them.



FIRST FLOOR



SECOND FLOOR

This floorplan is for illustration purposes only and is not to scale. The position and size of doors, windows, appliances and other features are approximate.

Score	Energy rating	Current	Potential
92+	A		
81-91	B		
69-80	C		
55-68	D	66 D	78 C
39-54	E		
21-38	F		
1-20	G		

Deposit: £3,000.00

Holding Deposit:

Council Tax Band: E

Where no figures are shown, we have been unable to ascertain the information. All figures that are shown were correct at the time of printing.