



KEMPTON HOUSE, WHITMORE ESTATE, LONDON, N1
£500,000 LEASEHOLD

A WONDERFULLY BRIGHT TWO BEDROOM APARTMENT WITH PRIVATE BALCONY

Islington | 0207 354 2480 | islington@winkworth.co.uk

Winkworth

winkworth.co.uk

See things differently



DESCRIPTION:

Positioned on the third floor of very well-kept block is this wonderful 642sqft two bed flat. The property offers amazing light rooms throughout with contemporary interiors finished in neutral tones. The living room boasts solid wood floors and offers ample space for entertaining. The fitted kitchen offers solid stone worktops with lots of storage and provides access to a private balcony. Both double bedrooms are of even proportions and benefit from inbuilt storage. The property is completed with a modern style family bathroom and is offered to the market chain free.

Located on Phillip Street, the property is conveniently located with a huge choice of local amenities with Hoxton Square, Old Street, Shoreditch, Liverpool Street and the City all easily accessible. They also offer an array of boutique shops, cafes, restaurants, and bars and is arguably one of the trendiest areas in the whole of London. You also benefit from excellent transport links with Hoxton overground station and Old Street station a short walk away. There are also regular bus routes that can get you to and from the City.

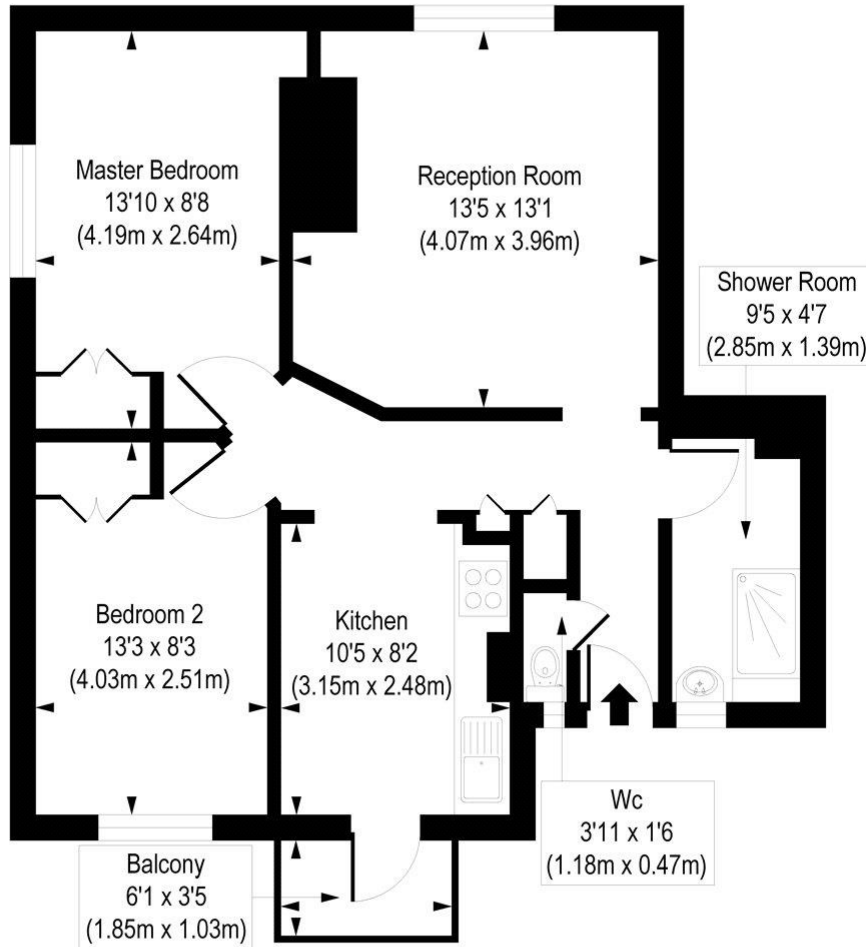
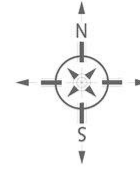
Winkworth



Winkworth

Kempton House, N1

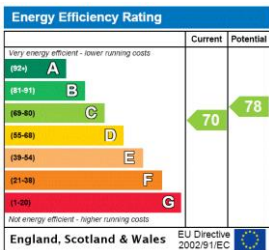
Approx. Gross Internal Floor Area 642 sq. ft / 59.66 sq. m



Third Floor

COMPLIANT WITH RICS CODE OF MEASURING PRACTICE. Floorplan is for illustrative purposes only and is not to scale. Every attempt has been made to ensure the accuracy of the floorplan shown, however all measurements, fixtures, fittings and data shown are an approximate interpretation for illustrative purposes only. Liability for errors, omissions or mis-statement through negligence or otherwise is hereby excluded.

This floorplan is for illustration purposes only and is not to scale. The position and size of doors, windows, appliances and other features are approximate.



Islington | 0207 354 2480 | islington@winkworth.co.uk



winkworth.co.uk

See things differently

Winkworth wishes to inform prospective buyers and tenants that these particulars are a guide and act as information only. All our details are given in good faith and believed to be correct at the time of printing but they don't form part of an offer or contract. No Winkworth employee has authority to make or give any representation or warranty in relation to this property. All fixtures and fittings, whether fitted or not are deemed removable by the vendor unless stated otherwise and room sizes are measured between internal wall surfaces, including furnishings.