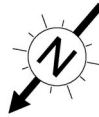
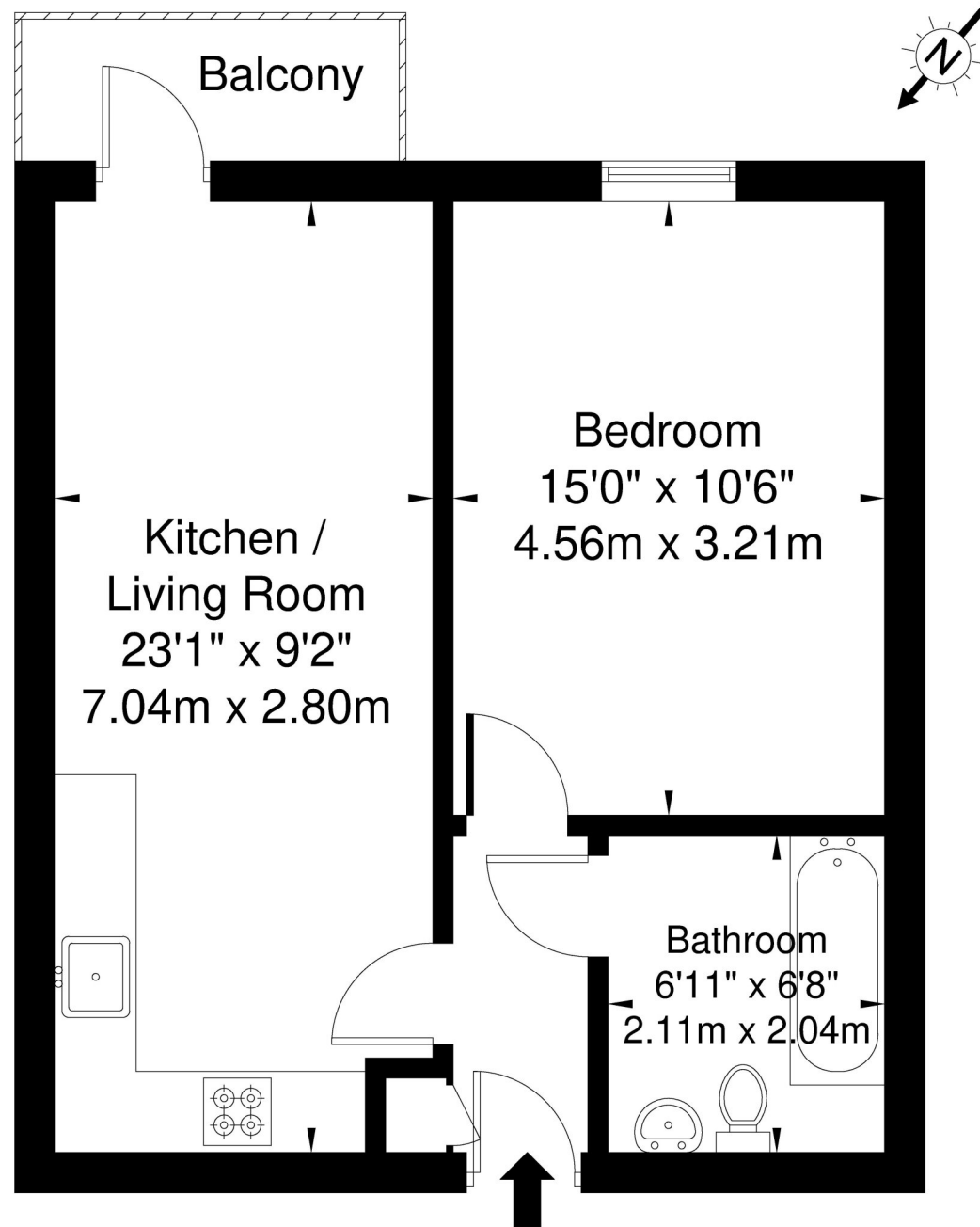


Dowding House West Barnes Lane SW20 0BN

Approx. Gross Internal Area = 43.3 sq m / 466 sq ft



Ref

Copyright

**BLEU
PLAN**

The Floor plan is not to scale and measurements and areas shown are approximate and therefore should be used for illustrative purposes only. The plan has been prepared in accordance with the RICS code of Measuring Practice and whilst we have confidence in the information produced it must not be relied on. If there is any aspect of particular importance, you should carry out or commission your own inspection of the property.

Copyright © BLEUPLAN

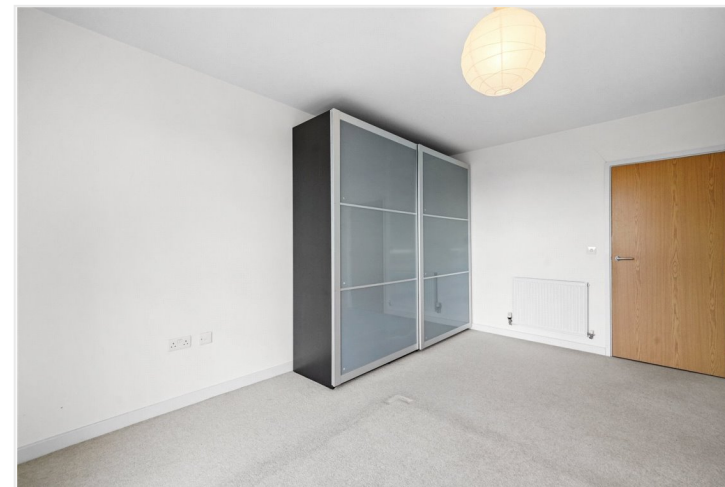


Dowding House, 22 West Barnes Lane, London, SW20

Asking Price £325,000 Leasehold

A stunning one bedroom apartment on the fourth floor of this purpose built modern development located in the heart of Raynes Park.

- **Double bedroom | Balcony**
- **Open plan living space | No chain**



DESCRIPTION

A stunning one bedroom apartment on the fourth floor of this purpose built modern development located in the heart of Raynes Park.

The property comprises of entrance hall, open plan reception / kitchen, double bedroom with built in wardrobes and a 3 piece family bathroom. Further benefits include, Southerly facing private balcony and electric central heating.

Raynes Park has a plethora of boutique shops, cafes, eateries and a Waitrose supermarket. The train station (South Western trains) gives you direct access to The City and West End within 30 minutes. Nearby Wimbledon Common is a popular area for recreation, relaxation and a perfect place for spotting wildlife and birds.

EPC Rating C

Council Tax Band C

Service Charge Approx £1836 per year

Ground Rent included in service charge

