



Anchor Court London Street Basingstoke RG21 7NY

Description

This furnished studio apartment is conveniently located within the 'Top of Town' with parking included.

It is a relatively large studio offering an open plan accommodation, fitted kitchen, living/dining room plus a bedroom area which could be screened off for additional privacy.

Anchor Court is a small converted building with a mix of studio's, one and two bedroom apartments walking distance to the train station and festival place.




Winkworth

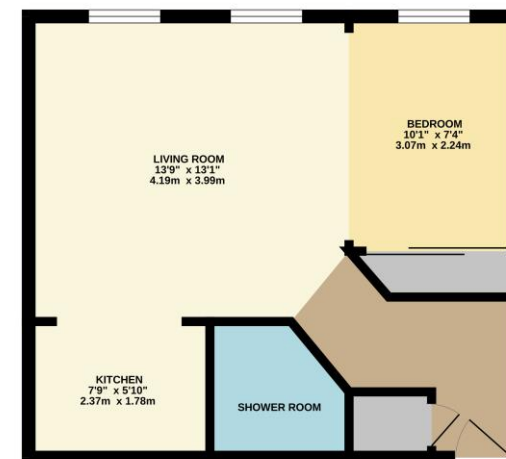
Accommodation

Studio apartment
Open plan living/dining/kitchen
area
Shower room
One parking space
Furnished

All details are given in good faith and are believed to be correct at time of printing. Winkworth give no representation as to their accuracy and potential purchasers or tenants must satisfy themselves by inspection or otherwise as to their correctness. No employee of Winkworth has authority to make or give any representation or warranty in relation to this property.

Energy Efficiency Rating		
	Current	Potential
Very energy efficient - lower running costs		
(92+) A		83
(81-91) B		
(69-80) C		
(55-68) D	69	
(39-54) E		
(21-38) F		
(1-20) G		
Not energy efficient - higher running costs		
England, Scotland & Wales		EU Directive 2002/91/EC 

FIRST FLOOR
399 sq.ft. (37.1 sq.m.) approx.



TOTAL FLOOR AREA : 399 sq.ft. (37.1 sq.m.) approx.
Whilst every attempt has been made to ensure the accuracy of the floorplan contained here, the measurements of rooms, sections, corners and any other details are approximate and should not be relied upon for any legal or prospective purchase. The services, systems and appliances shown have not been tested and no guarantee is given as to their condition or efficiency at the time of printing.



Basingstoke Office

10B Church Street, Basingstoke, Hampshire, RG21 7QE
01256 811730 | basingstoke@winkworth.co.uk

winkworth.co.uk/Basingstoke

Winkworth

See things differently.