



Sinclair Road, Brook Green, W14

£599,950 Share of Freehold

A stylish two bedroom flat on the top floor of a mid-terrace Victorian house.

Reception Room | Open Plan Kitchen | 2 Bedrooms | Bathroom | 755 Sq Ft / 70 Sq M | Council Tax Band D | EPC Rating Band D

Winkworth

winkworth.co.uk

for every step...



LOCATION

The property is located close to the junction with Maclise Road, ideal for the numerous amenities of both Brook Green and Shepherds Bush, including Westfield London, as well as the open spaces of Holland Park. The closest stations are Shepherds Bush (Central Line and Overground) and Hammersmith (Piccadilly, District, Circle and Hammersmith & City Lines). The eagerly anticipated and soon to open Kensington Olympia redevelopment is also just moments away.

DESCRIPTION

The property is well presented throughout in a modern contemporary style, offering accommodation which comprises entrance hall, two double bedrooms, bathroom and open plan kitchen/reception room.

Share of freehold with an underlying lease of 999 years from 25 December 1977

Ground Rent:- £105 p.a.

Service Charge:- c. £1000 p.a.





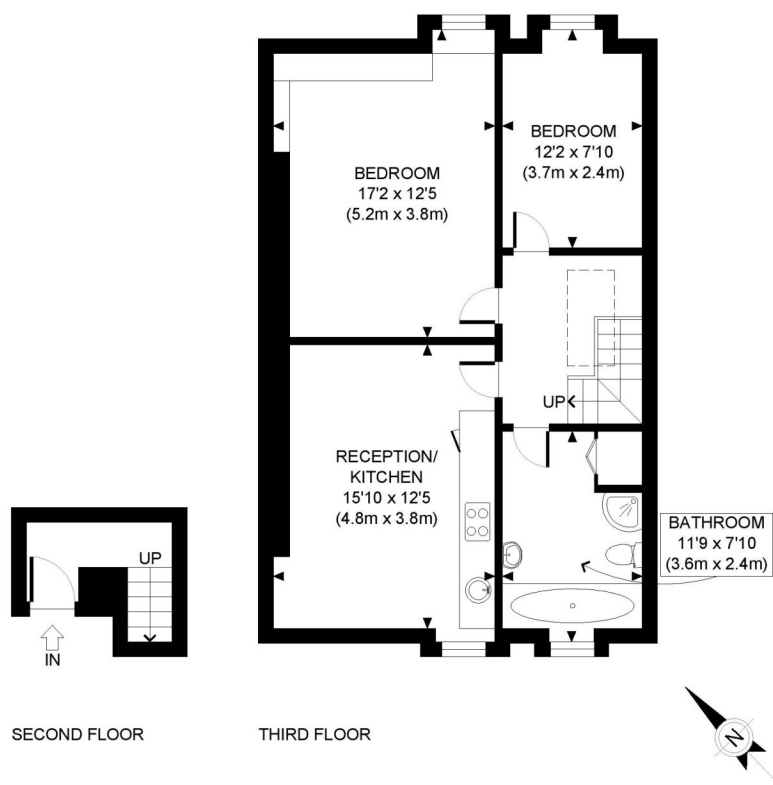
LOCAL AUTHORITY
Hammersmith & Fulham

TENURE
Share of Freehold 951 years 5 months.

PRICE: £599,950 Share of Freehold



Score	Energy rating	Current	Potential
92+	A		
81-91	B		
69-80	C		
55-68	D	62 D	63 D
39-54	E		
21-38	F		
1-20	G		



SECOND FLOOR

THIRD FLOOR

APPROX. GROSS INTERNAL FLOOR AREA: 755 SQ FT/ 70 SQM

Winkworth

SINCLAIR ROAD, W14

This plan is for illustrative purposes only and should be used as such by any prospective client. Whilst every attempt has been made to ensure the accuracy of the Floor Plan contained here, measurements of the doors, windows, rooms and any other items are approximate and no responsibility is taken for any errors, omissions, or misstatement. The services, systems and appliances shown have not been tested and no guarantee as to the operability or efficiency can be given.

PROPERTY PHOTO PLANS .CO.UK
ONE STOP SHOP FOR PROPERTY MARKETING

The displayed square footage is taken from the floor plans with measurements created using the Royal Institute of Chartered Surveyors' Code of Practice for Measuring. These measurements are approximate and included for illustrative purposes only. Winkworth does not make any representation as to the accuracy of these measurements and you should seek to verify them for yourself. Winkworth accept no liability for any loss you may suffer if you rely on these measurements.

Hammersmith | 0207 371 4466 | hammersmith@winkworth.co.uk

Winkworth

for every step...

Under the Property Misdescriptions Act 1991, these Particulars are a guide and act as information only. All details are given in good faith and are believed to be correct at time of printing. Winkworth give no representation as to their accuracy and potential purchasers or tenants must satisfy themselves by inspection or otherwise as to their correctness. No employee of Winkworth has authority to make or give any representation or warranty in relation to this property.