



Lowden Close, Winchester, Hampshire, SO22 4EW

Winkworth



Lowden Close, Winchester, Hampshire, SO22 4EW

Ideal First Home or Investment Opportunity in Badger Farm

This excellent house in the popular area of Badger Farm is offered with no forward chain. It is beautifully presented with plenty of natural light, finished in an attractive, neutral palette of colours and has recently been re-clad with cement weatherboard cladding.

The property is entered via an enclosed porch with boiler cupboard to the right, with another door leading into an attractive, double aspect, open plan sitting/dining room with glazed doors opening out to the patio and garden. A substantial storage cupboard is located under the stairs. The modern, fitted kitchen has ample base and eye-level units with integrated oven, hob and extractor and space for further appliances such as washing machine and fridge/freezer.

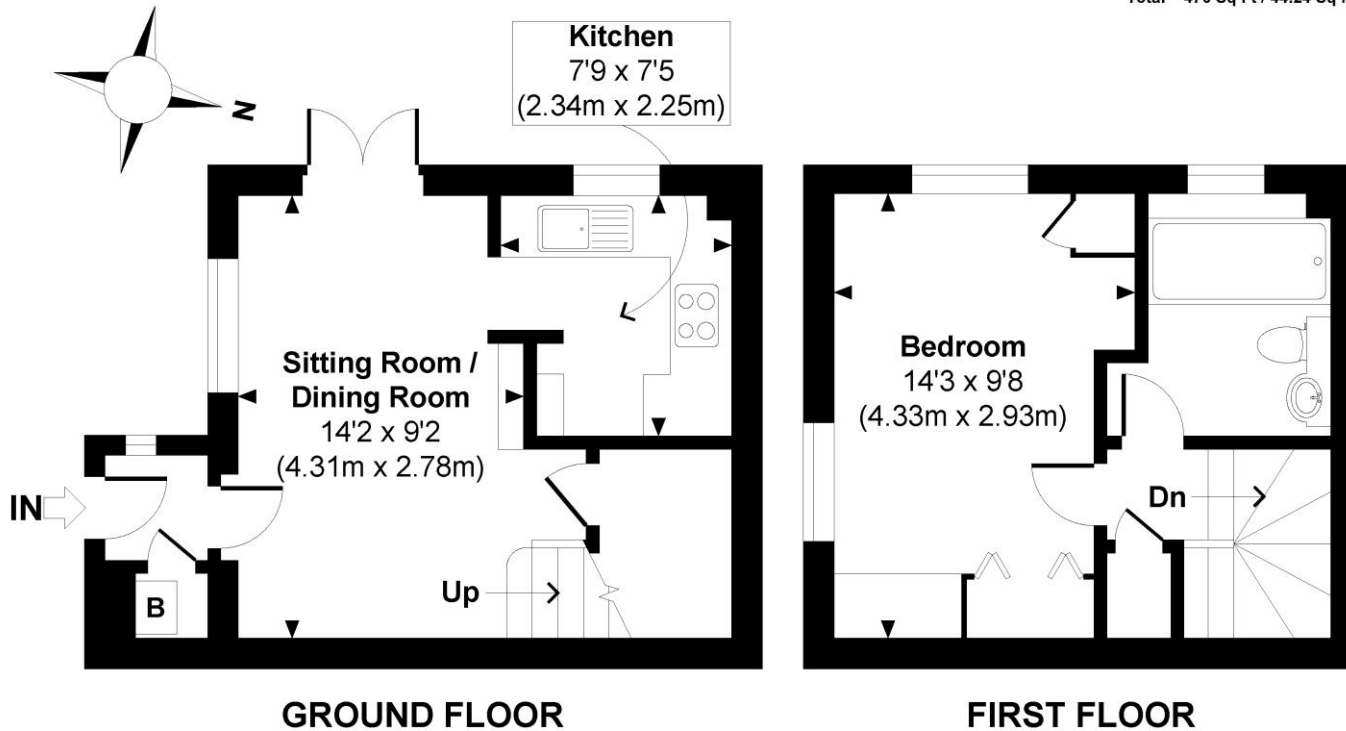
Stairs rise to the first floor where there is a generous double bedroom with built-in wardrobes and additional integrated storage. The contemporary bathroom is fully tiled with shower over the bath. Further useful storage is located on the landing.

Outside to the front of the house a small number of steps lead up to the front door with an area of lawn to the left of a path. The rear garden is part paved with the remainder laid to lawn and is fully enclosed. The property includes an allocated parking space.



Lowden Close

Approximate Gross Internal Area
Total = 476 Sq Ft / 44.24 Sq M



© www.propertyfocus.co | Professional Property Photography & Floorplans

This plan is for illustrative purposes only and is not to scale. If specified, the Gross Internal Area (GIA), dimensions, North point orientation and the size and placement of features are approximate and should not be relied on as a statement of fact. No guarantee is given for the GIA and no responsibility is taken for any error, omission or misrepresentation.

Lowden Close, Winchester, Hampshire, SO22 4EW

Directions

From our office in Southgate Street, head in a southerly direction along St Cross Road. Turn right at the roundabout, signposted for Oliver's Battery and Badger Farm. Proceed along Badger Farm Road and turn right at the next roundabout into Meadow Way. Take the first right onto Plough Way, then the first left onto Lowden Close. The property is on the left-hand side.

Location

Conveniently located in the popular Badger Farm area of Winchester with easy access to the M3. Sainsbury's superstore is close by and there are excellent bus services into the centre of Winchester with its railway station (links to London Waterloo in approximately 55 minutes), high street shops, boutiques, library, coffee shops, public houses, restaurants, theatre, cinema, museums and, of course, the City's historic cathedral. In the catchment for Kings' secondary school which is rated Outstanding by Ofsted.

Tenure: Freehold

Services

Mains gas, electricity, water and drainage

Winchester City Council

Council tax band: B

EPC rating: C

Viewings

Strictly by appointment with Winkworth Winchester Office

Winkworth.co.uk/winchester

Winkworth Winchester

2 Black Swan Buildings, Southgate Street, Winchester, SO23 9DT
01962 866 777 | winchester@winkworth.co.uk

Winkworth Country House Department

13 Charles II Street, St James's, London, SW1Y 4QU
020 7870 4878 | countryhouse@winkworth.co.uk

Winkworth

See things differently