



16 HEATHLANDS COURT, WOKINGHAM, BERKSHIRE, RG40 3AY
OIE £525,000 FREEHOLD

SITUATED ON THE BORDERS OF WOKINGHAM AND CROWTHORNE IN THIS SEMI RURAL LOCATION IS THIS SOUGHT AFTER TOWN HOUSE SAT IN 6 ACRES OF COMMUNAL PARK LIKE GROUNDS WITH STUNNING VIEWS.

Winkworth

Wokingham | 01189 072777 | wokingham@winkworth.co.uk

for every step...

winkworth.co.uk



DESCRIPTION:

Situated on the borders of Wokingham and Crowthorne in this semi rural location is this sought after town house sat in 6 acres of communal park like grounds with stunning views.

The accommodation is over 3 floors and comprises, to the ground floor living room, dining room, modern fitted kitchen with integrated appliances, and a cloakroom. To the first floor there are three bedrooms with re fitted en-suite to master, plus modern family bathroom. To the second floor is a further bedroom/office.

The estate is well hidden from view and offers a quiet residential haven. There is a generous amount of private residents' parking and a visitor parking area. All maintained by communal estate.

To the rear is a private garden enclosed by hedges and shrubbery with a patio area and the remainder mainly laid to lawn with an array of mature bush and tree borders. The private gardens are maintained by the estate gardeners.

To the front is a private terrace area partially laid to lawn with mature bush borders and covered entrance to front door with light, with a view across the formal lawns and gardens to the paddock and woods beyond.

Garage is in a block of four. High pitched roof offering generous sized rafter storage. Power sockets and lighting.

AT A GLANCE

- Park Like Setting with 6 Acres of Grounds
- Modern Kitchen with appliances
- Two Reception Rooms
- Four Good Sized Bedrooms
- No Onward Chain
- Garage & Further (Allocated) Parking
- Service charge £210 pm
- Council tax band F Wokingham
- Ultra fast broadband 1000 Mbps
- Mobile Coverage Vodafone, O2





Heathlands Court

Approximate Gross Internal Area = 123.6 sq m / 1330 sq ft

Winkworth

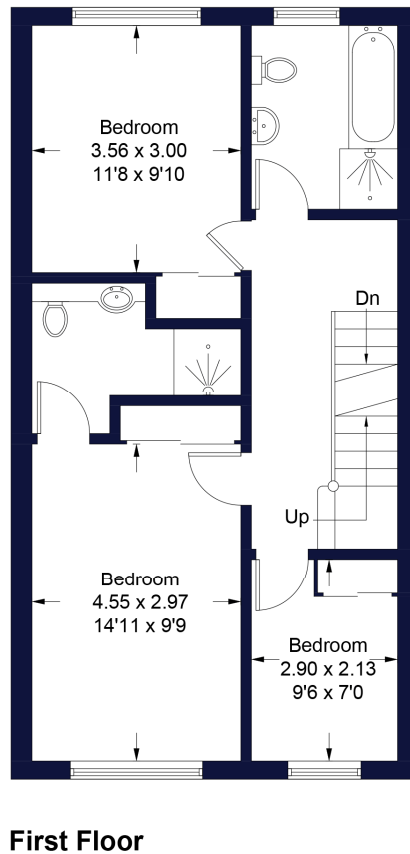
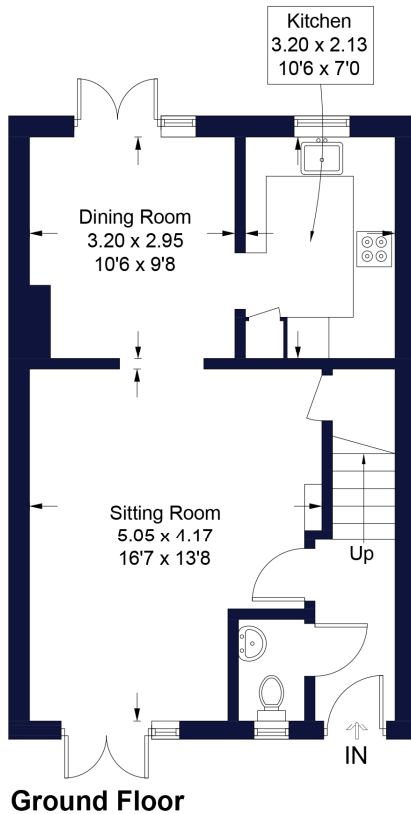
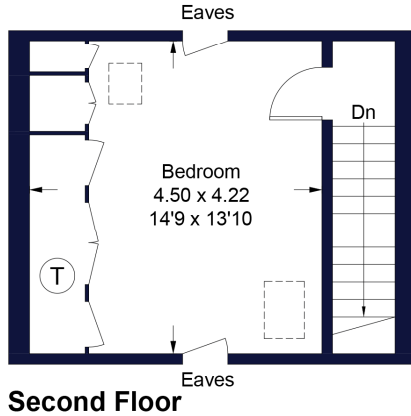
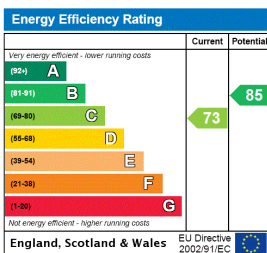


Illustration for identification purposes only, measurements are approximate, not to scale. FloorplansUsketch.com © 2024 (ID1126195)

This floorplan is for illustration purposes only and is not to scale. The position and size of doors, windows, appliances and other features are approximate.



Wokingham | 01189 072777 | wokingham@winkworth.co.uk

winkworth.co.uk

Winkworth wishes to inform prospective buyers and tenants that these particulars are a guide and act as information only. All our details are given in good faith and believed to be correct at the time of printing but they don't form part of an offer or contract. No Winkworth employee has authority to make or give any representation or warranty in relation to this property. All fixtures and fittings, whether fitted or not are deemed removable by the vendor unless stated otherwise and room sizes are measured between internal wall surfaces, including furnishings.

We are required by law to conduct anti-money laundering checks on all those buying a property. Whilst we retain responsibility for ensuring checks and any ongoing monitoring are carried out correctly, the initial checks are carried out on our behalf by Landmark who will contact you once you have had an offer accepted on a property you wish to buy. The cost of these checks is £25 per person and this will need to be paid by you in advance of us issuing a memorandum of sale, directly to Landmark, and is non-refundable.

Winkworth

for every step...