



**BARDSLEY HOUSE, GREENWICH, LONDON, SE10**  
**£395,000 LEASEHOLD**

**A BEAUTIFULLY PRESENTED TWO BEDROOM FLAT WHICH IS FOUND ON THE 2ND FLOOR OF THIS 1940'S BLOCK THAT IS LOCATED IN WEST GREENWICH, JUST MOMENTS FROM THE TOWN CENTRE AND RIVER WALKWAY. MEASURING CIRCA 556 SQ FT.**

Greenwich | 02030533033 | [greenwich@winkworth.co.uk](mailto:greenwich@winkworth.co.uk)

**Winkworth**

for every step...

[winkworth.co.uk](http://winkworth.co.uk)





## DESCRIPTION:

A beautifully presented two bedroom flat which is found on the 2nd floor of this 1940's block that is located in West Greenwich, just moments from the town centre and river walkway. Measuring circa 556 sq ft.

In superb order throughout the property features a fabulous galley style kitchen, that in turn leads onto a 12ft private balcony. There are two good sized double bedrooms, a lovely reception room and a modern family bathroom. Added benefits include entry phone, double glazing and gas central heating, along with ample storage.

Bardsley Lane is quietly located just to the west of the town centre, meaning it's just moments away from a wonderful selection of shops and restaurants, with Greenwich Market and of course The Royal Park , with its Observatory. Mainline Rail, DLR and riverboat service are also close to hand.

## AT A GLANCE

- two bedroom flat
- beautiful condition
- circa 556 sq ft
- 2nd floor
- lovely galley kitchen
- double bedrooms
- West Greenwich location
- moments from river walk
- close to town centre

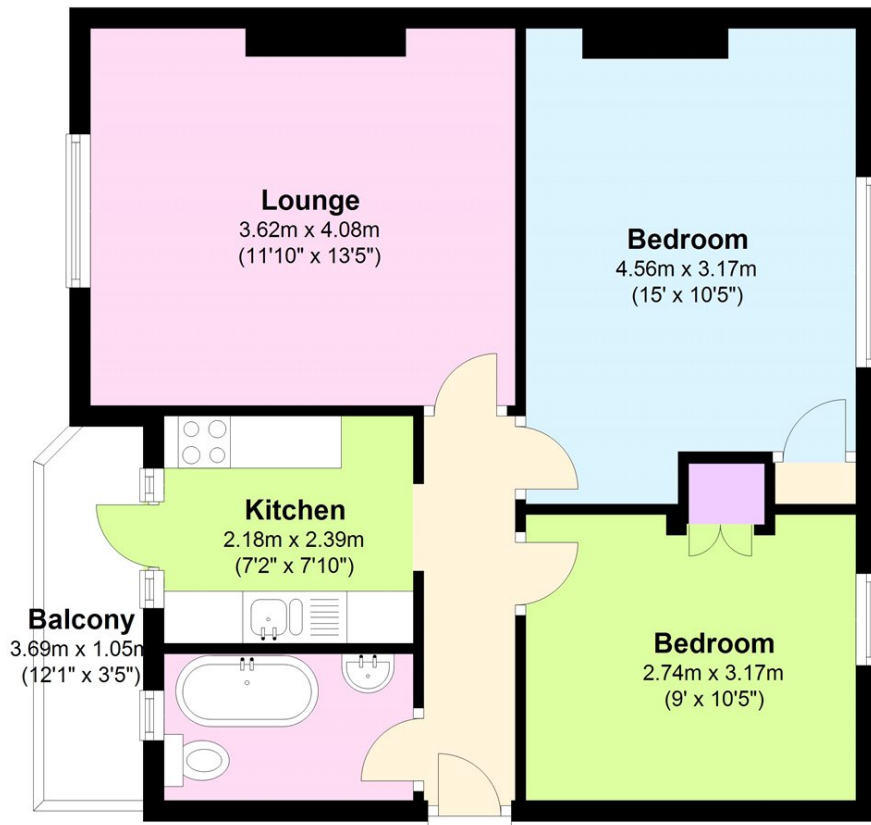






## Second Floor

Approx. 51.7 sq. metres (556.0 sq. feet)



Total area: approx. 51.7 sq. metres (556.0 sq. feet)

This floorplan is for illustration purposes only and is not to scale. The position and size of doors, windows, appliances and other features are approximate.

Score	Energy rating	Current	Potential
92+	A		
81-91	B		
69-80	C		80 C
55-68	D	67 D	
39-54	E		
21-38	F		
1-20	G		

**Tenure:** Leasehold

**Term:** 103 year and 11 months

**Service Charge:** £1348 per annum

**Ground Rent:** £ 0 Annually (subject to increase)

**Council Tax Band:** A

Where no figures are shown, we have been unable to ascertain the information. All figures that are shown were correct at the time of printing.

Greenwich | 02030533033 | greenwich@winkworth.co.uk

**Winkworth**

for every step...

winkworth.co.uk

Winkworth wishes to inform prospective buyers and tenants that these particulars are a guide and act as information only. All our details are given in good faith and believed to be correct at the time of printing but they don't form part of an offer or contract. No Winkworth employee has authority to make or give any representation or warranty in relation to this property. All fixtures and fittings, whether fitted or not are deemed removable by the vendor unless stated otherwise and room sizes are measured between internal wall surfaces, including furnishings.