



19 Leeson Drive
Ferndown BH22 9QL
Guide Price £375,000

Winkworth



**GUIDE PRICE £375,000
FREEHOLD**

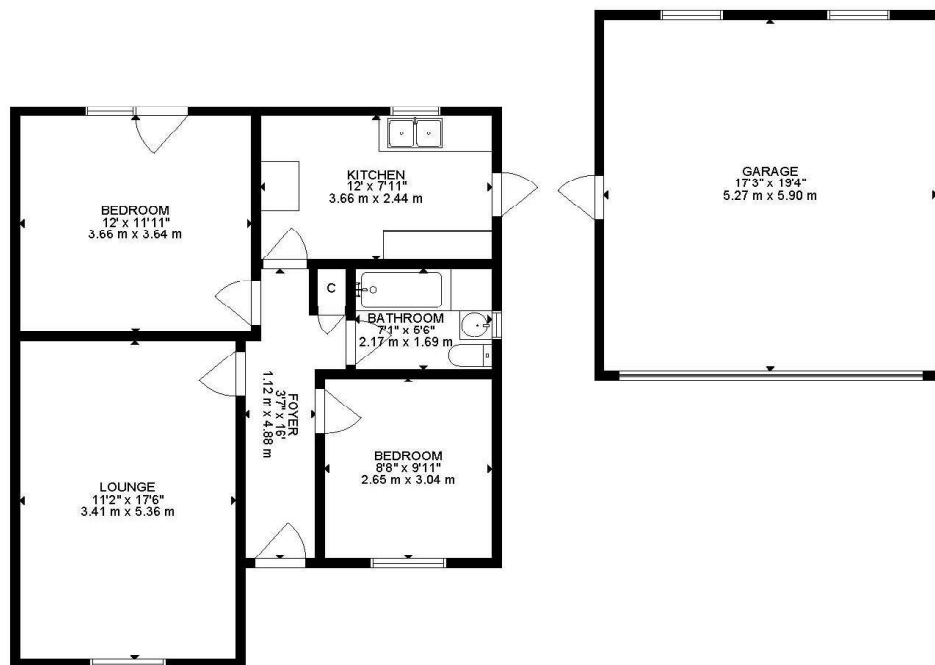
**A fantastic opportunity to
purchase this two double
bedroom bungalow,
positioned in a quiet residential
cul-de-sac and benefiting from
no onward chain, a secluded
garden and detached double
garage with electric door.**

Bungalow
New Boiler
Detached Double Garage With Electric
Door
Driveway
Vast Potential To Improve
Secluded Garden
Sought After Residential Location
Two Double Bedrooms
No Onward Chain

EPC TBC | Council Tax Band C

**01202 434365
ferndown@winkworth.co.uk**





GROSS INTERNAL AREA
 FLOOR 1: 710 SQ FT, 66 m²
 EXCLUDED AREAS: GARAGE: 33 SQ FT, 31 m²
 TOTAL: 710 SQ FT, 66 m²
 SIZE AND DIMENSIONS ARE APPROXIMATE, ACTUAL MAY VARY



LOCATION

Positioned in this sought after, quiet residential location just a short distance from Ferndown town centre which has range of amenities, including an M&S Food Hall. There are bus routes nearby giving you easy access to Bournemouth & Poole, both of which have an excellent range of shops, bars, restaurants and leisure facilities, as well as award winning sandy beaches. The nearby A31 provides quick access to the New Forest, Southampton and beyond for the commuter by car.

Winkworth Ferndown

406 Ringwood Road, Ferndown, Dorset, BH22 9AU

01202 434365 | ferndown@winkworth.co.uk

winkworth.co.uk/ferndown

Winkworth