



CLOUDESLEY MANSIONS, CLOUDESLEY PLACE, LONDON, N1
£375,000 LEASEHOLD

Islington | 0207 354 2480 | islington@winkworth.co.uk

Winkworth

winkworth.co.uk

See things differently



DESCRIPTION:

This wonderfully light one bed flat is set over the raised ground floor of this charming Victorian mansion block in one of Barnsburys most sought after locations. The property offers the perfect opportunity to modernise throughout and is offered to the market chain free.

The lease has 60 years remaining so this will be for cash buyers only.

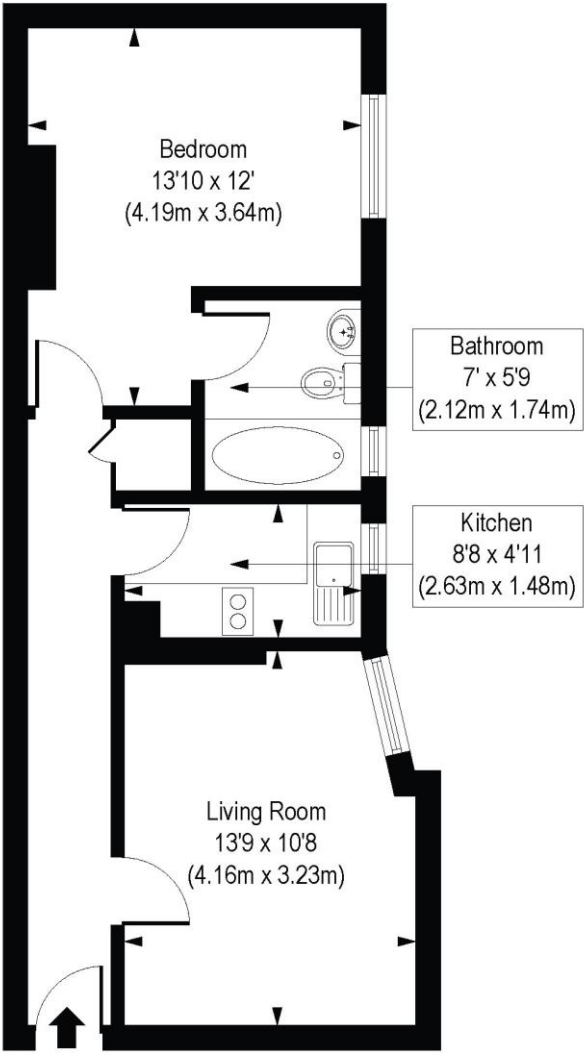
Cloudesley Mansions is set on the ever-popular Cloudesley Place, a quiet no through road which is conveniently set just moments from Angel. An array of excellent shops and restaurants are located on Upper Street alongside a Waitrose and Marks and Spencer just a couple of roads away. A selection of excellent gastropubs including The Albion, Pig and Butcher and The Crown are all at hand and excellent transport links provide effortless access to the City and West End. Angel Station offers the closest underground services on the Northern line whilst a selection of routes, alongside international links, can be easily reached at Kings Cross and St Pancras.

Winkworth



Winkworth

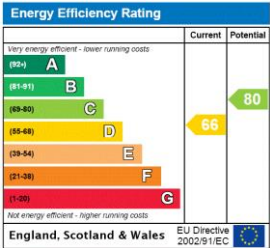
Cloudesley Mansions, Cloudesley Place, N1
 Approx. Gross Internal Floor Area 461 sq. ft / 42.84 sq. m



Raised Ground Floor

COMPLIANT WITH RICS CODE OF MEASURING PRACTICE. Floorplan is for illustrative purposes only and is not to scale. Every attempt has been made to ensure the accuracy of the floorplan shown, however all measurements, fixtures, fittings and data shown are an approximate interpretation for illustrative purposes only. Liability for errors, omissions or mis-statement through negligence or otherwise is hereby excluded.

This floorplan is for illustration purposes only and is not to scale. The position and size of doors, windows, appliances and other features are approximate.



Islington | 0207 354 2480 | islington@winkworth.co.uk



winkworth.co.uk

See things differently

Winkworth wishes to inform prospective buyers and tenants that these particulars are a guide and act as information only. All our details are given in good faith and believed to be correct at the time of printing but they don't form part of an offer or contract. No Winkworth employee has authority to make or give any representation or warranty in relation to this property. All fixtures and fittings, whether fitted or not are deemed removable by the vendor unless stated otherwise and room sizes are measured between internal wall surfaces, including furnishings.