



CLAVERTON STREET, SW1V

£575,000

SHARE OF FREEHOLD

At a glance...

- Large Garden
- Double Bedroom
- Open Hallway
- Great Location
- Share Of Freehold
- Council Tax Band: D

Winkworth

for every step...



Score	Energy rating	Current	Potential
92+	A		
81-91	B		
69-80	C		77 C
55-68	D	67 D	
39-54	E		
21-38	F		
1-20	G		

CLAVERTON STREET, SW1V

£575,000

SHARE OF FREEHOLD

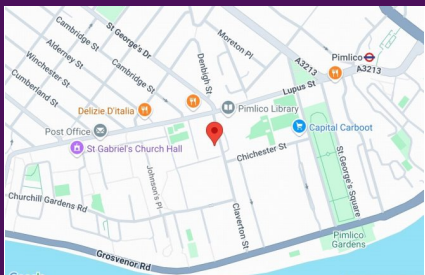
Winkworth are proud to be presenting this well proportioned, garden apartment on Claverton Street. It is well located for Pimlico station, which is only a short stroll away by foot, with easy access into Central London.

The apartment itself has its own private entrance which opens into a nice, bright and open hallway with space for dining as well as a generous coat cupboard.

The living area is well proportioned with laminate flooring as well as some built in cupboards for extra storage.

The newly renovated modern bathroom, is fully tiled with a shower over bath, heated towel rail and under sink and over sink storage.

The super spacious kitchen benefits from plenty of worktop and storage space and a large window looking out into the beautiful patioed, green garden.

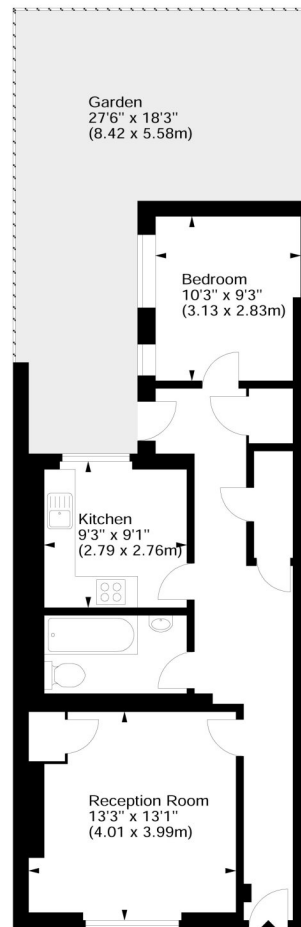


winkworth wishes to inform prospective buyers and tenants that these particulars are a guide and act as information only. All our details are given in good faith and believed to be correct at the time of printing but they don't form part of an offer or contract. No Winkworth employee has authority to make or give any representation or warranty in relation to this property. All fixtures and fittings, whether fitted or not are deemed removable by the vendor unless stated otherwise and room sizes are measured between internal wall surfaces - including fire-chimneys.

Claverton Street, SW1



Approx. Gross Internal Area
604 Sq Ft - 56.11 Sq M



Lower Ground Floor

For illustration purposes only. Not to scale.
All measurements are taken and shown at floor level.
www.r3photography.co.uk © Photography / Floor Plans / Lease Plans / EPCs



Pimlico & Westminster

020 7828 1786

pimlico@winkworth.co.uk

winkworth.co.uk/pimlico-westminster

Winkworth

for every step...