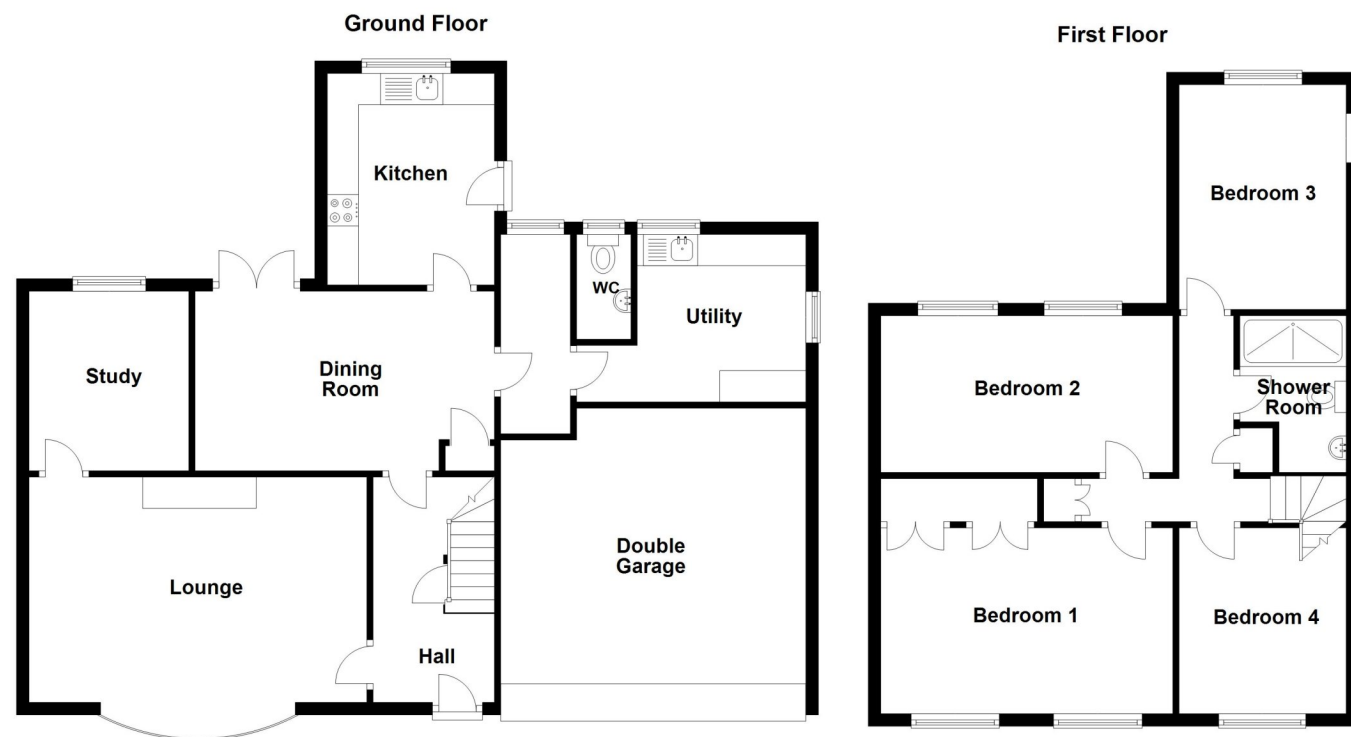


EPC TO FOLLOW



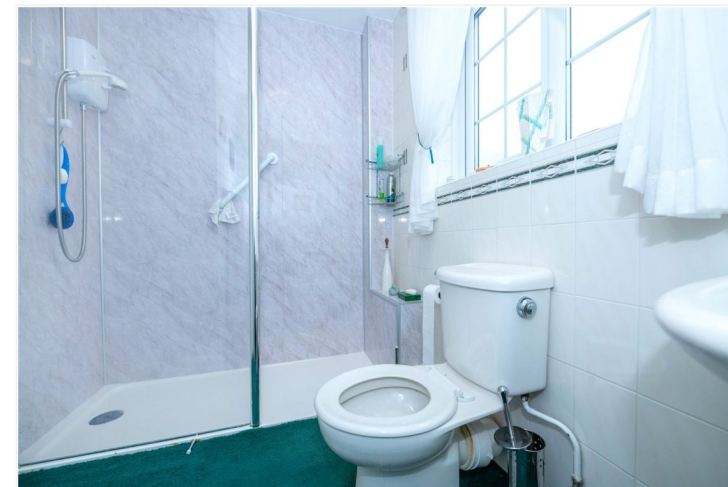
18 Main Street, Wilsford, Grantham, Lincolnshire, NG32 3NP

£325,000 Freehold

NO CHAIN Winkworth are delighted to offer for sale this well presented Four Bedroom Detached Home with a Double Garage sat on a fantastic sized plot with ample parking and a large rear garden. The property boasts spacious accommodation, Four great sized Bedrooms and a modern fitted Shower Room upstairs. Internally, the accommodation briefly comprises of Entrance Hall, Lounge, Study, Dining Room, Kitchen, Utility Room, Downstairs W/C, Four Bedrooms, Shower Room & a Double Garage.

The rear garden is a fantastic selling point, being principally laid to lawn with numerous mature plants, trees and shrubs, an initial paved pathway and gravel area perfect for sitting out and enjoying the morning sun. To the front of the property, there is another lawned area with numerous shrubs and trees providing privacy, along with a tarmac driveway offering off street parking for numerous vehicles.

NO CHAIN | AMPLE PARKING | WELL PRESENTED THROUGHOUT | SPACIOUS ACCOMMODATION | LARGE NON OVERLOOKED REAR GARDEN | POPULAR VILLAGE LOCATION | DOUBLE GARAGE | UPVC DOUBLE GLAZING



ACCOMMODATION

Entrance Hall

Living Room - 17'10" x 11'10" (5.44m x 3.6m)

Study - 9'5" x 8'5" (2.87m x 2.57m)

Dining Room - 15'9" x 9'6" (4.8m x 2.9m)

Kitchen - 11'1" x 8'9" (3.38m x 2.67m)

Utility Room - 12' x 8'9" (3.66m x 2.67m)

Downstairs W/C

Bedroom One - 14'6" x 10'4" (4.42m x 3.15m)

Bedroom Two - 15'6" x 9'6" (4.72m x 2.9m)

Bedroom Three - 11'1" x 8'10" (3.38m x 2.7m)

Bedroom Four - 9'10" x 9'9" (3m x 2.97m)

Shower Room

LOCAL AUTHORITY

North Kesteven District Council

TENURE

Freehold

COUNCIL TAX BAND

D