





A beautifully presented contemporary apartment, situated in the heart of highly sought after Southfields.

The two double bedroom apartment is arranged over three floors. The entrance hall is on the second floor and leads to both the first and third floors.

On the first floor, there is a well-designed open plan reception room/kitchen/dining room with double height ceiling, making a light and airy space which is perfect for entertaining. Also on the first floor is a second double bedroom featuring built in fitted wardrobes. The second floor has a mezzanine bedroom currently being used as a spacious study, perfect for working from home. The third floor features a large master bedroom with a sizeable ensuite bathroom including bath and an elegant south facing balcony. The third floor features the spacious master bedroom, a well-designed ensuite bathroom and a South facing elegant balcony.

Wimbledon Park Road is situated in the heart of Southfields and within walking distances to the wide-open spaces of Wimbledon Common and Putney Heath. The property is ideally located for access to all local amenities and Southfields Underground station.

Flat 4, 243A Wimbledon Park Road, Southfields, London, SW18 5RJ



Energy Efficiency Rating		Current	Potential
Very energy efficient - lower running costs			
(92-)	A		
(81-91)	B		
(69-80)	C	74	76
(55-68)	D		
(39-54)	E		
(21-38)	F		
(1-20)	G		
Not energy efficient - higher running costs			
England, Scotland & Wales		EU Directive 2002/91/EC	

Accommodation

Entrance Hall, Reception/Dining Room/Kitchen, Study/Mezzanine Bedroom, One Master Bedroom with Ensuite, Additional Second Double Bedroom, Family Bathroom, Balcony

Leasehold

Internal area

Approximate gross internal area:
Total 1118 sq.ft/ 103 sq.m

£775,000



Flat 4, 243A Wimbledon Park Road, Southfields, London, SW18 5RJ



Wimbledon Park Road

Approximate Gross Internal Area Total = 103.9 sq m / 1118 sq ft
(Excluding Void)

Winkworth

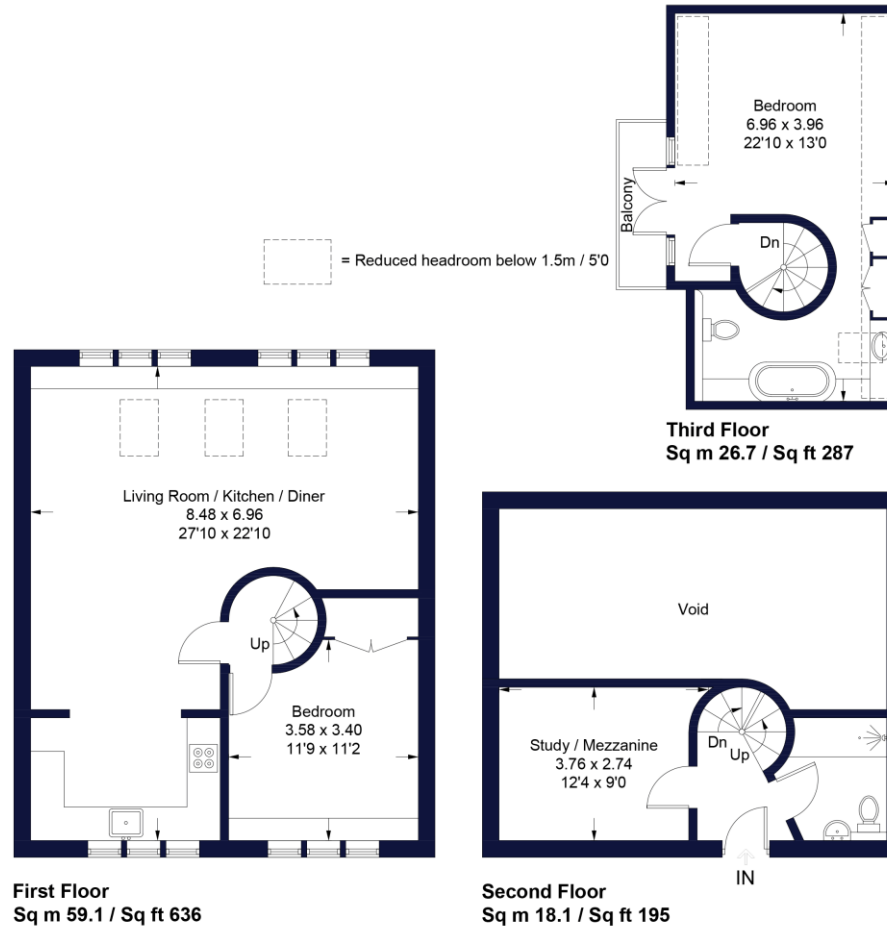


Illustration for identification purposes only, measurements are approximate, not to scale. FloorplansUsketch.com © 2022 (ID823156)

W614 Ravensworth 01670 713330

Winkworth

Under the Property Misdescriptions Act these particulars are intended as a guide and act as information only. They give a fair overall description for the guidance of potential purchasers or tenants but do not constitute an offer or part of a contract. All details and approximate measurements are given in good faith and are believed to be correct at the time of printing, but any potential purchasers or tenants should not rely on the mis-statements or representations of fact but must satisfy themselves by inspection or otherwise as to their correctness. No employee of Winkworth has authority to make or give any representation or warranty to this property.

Southfields office 241 Wimbledon Park Road, London SW18 5RJ | Tel: 0208 877 1000 | E-mail: Southfields@winkworth.co.uk
winkworth.co.uk