



ADAGIO POINT, DEPTFORD, LONDON, SE8
£365,000 LEASEHOLD

A BEAUTIFULLY PRESENTED AND LARGE ONE BEDROOM MODERN APARTMENT, THAT IS FOUND ON THE 4TH FLOOR OF THIS POPULAR DEVELOPMENT LOCATED JUST TO THE WEST OF GREENWICH TOWN CENTRE AND MOMENTS FROM THE RIVER WALK. FEATURING SUPERB RIVER AND CREEK VIEWS AND MEASURING CIRCA 614 SQ FT.

Greenwich | 02030533033 | greenwich@winkworth.co.uk

Winkworth

for every step...

winkworth.co.uk



DESCRIPTION:

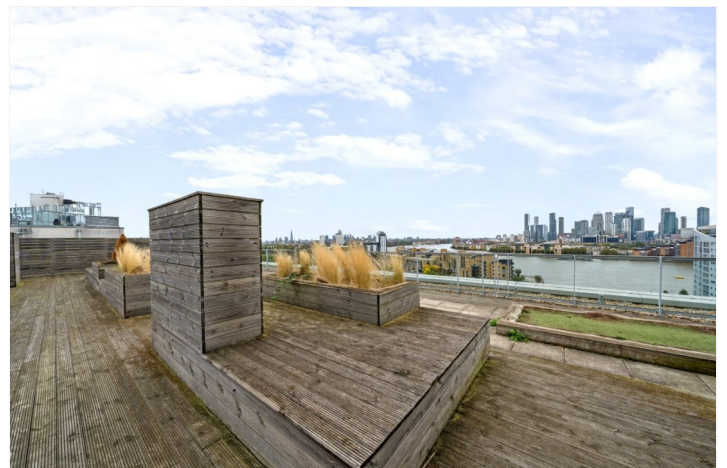
A beautifully presented and large one bedroom modern apartment, that is found on the 4th floor of this popular development located just to the west of Greenwich Town Centre and moments from the river walk. Featuring superb river and creek views and measuring circa 614 sq ft.

Presented in excellent order throughout, the accommodation briefly comprises a large 31ft reception room with a well fitted open plan kitchen area that has fitted white goods. This room in turn leads onto a private covered balcony, with the aforementioned views. There is a good sized double bedroom with fitted wardrobes, and a lovely family bathroom. Added benefits include video entry, a large communal roof terrace and concierge on site.

Creekside is a supremely popular development that sits next to the Creek, and as mentioned just moments from the river. Greenwich Town Centre is just a few minutes away, offering a fantastic array of shops and restaurants, along with mainline rail, DLR and riverboat service. The Royal Park, with its Observatory and the Naval Museum are also close by.

AT A GLANCE

- one bedroom flat
- 4th floor (with lift)
- river and creek views
- circa 614 sq ft
- lovely condition
- 31ft kitchen diner
- balcony
- communal roof terrace
- concierge on site
- no chain
- moments from river walk



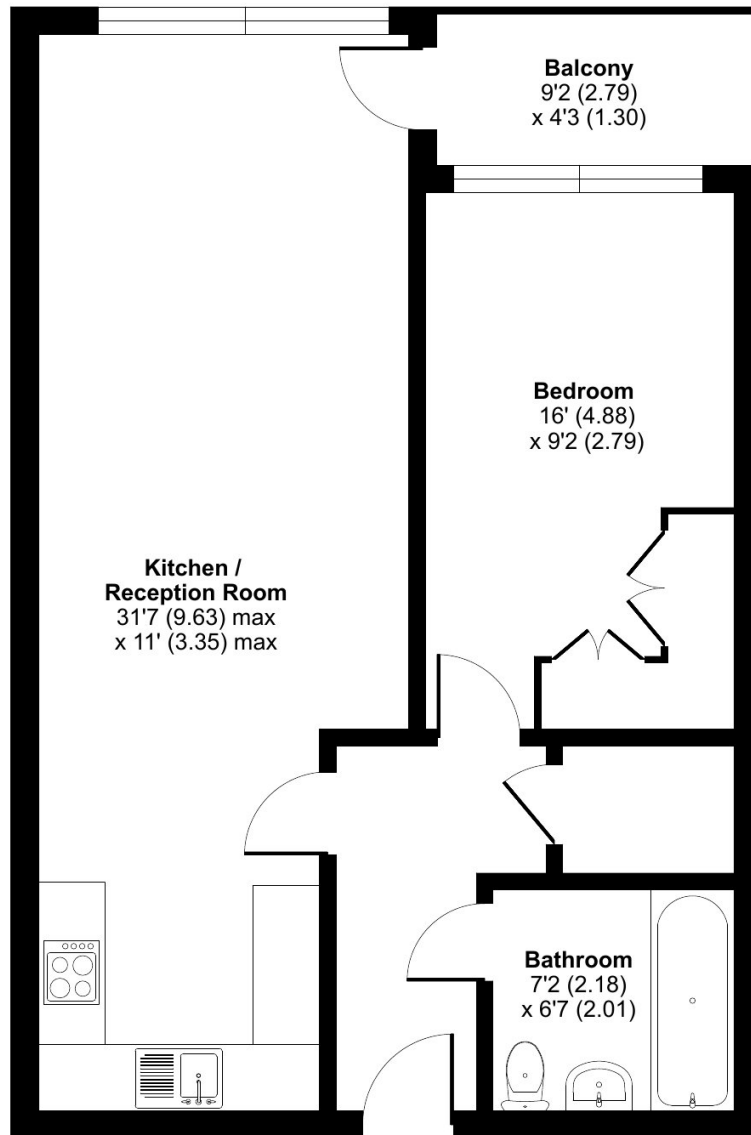




Laban Walk, London, SE8

Approximate Area = 614 sq ft / 57 sq m

For identification only - Not to scale



FOURTH FLOOR



Floor plan produced in accordance with RICS Property Measurement Standards incorporating International Property Measurement Standards (IPMS2 Residential). © nlschem 2024. Produced for L&Q Group. REF: 1195469

This floorplan is for illustration purposes only and is not to scale. The position and size of doors, windows, appliances and other features are approximate.

Score	Energy rating	Current	Potential
92+	A		
81-91	B	82 B	82 B
69-80	C		
55-68	D		
39-54	E		
21-38	F		
1-20	G		

Tenure: Leasehold

Term: 108 year and 0 months

Service Charge: £3858 per annum

Ground Rent: £ 0 Annually (subject to increase)

Council Tax Band:

Where no figures are shown, we have been unable to ascertain the information. All figures that are shown were correct at the time of printing.

Greenwich | 02030533033 | greenwich@winkworth.co.uk

Winkworth

for every step...

winkworth.co.uk

Winkworth wishes to inform prospective buyers and tenants that these particulars are a guide and act as information only. All our details are given in good faith and believed to be correct at the time of printing but they don't form part of an offer or contract. No Winkworth employee has authority to make or give any representation or warranty in relation to this property. All fixtures and fittings, whether fitted or not are deemed removable by the vendor unless stated otherwise and room sizes are measured between internal wall surfaces, including furnishings.