

PRINCIPAL SQUARE, LONDON, E9
£4,100 PER MONTH UNFURNISHED

SPACIOUS TWO-BEDROOM LOFT-STYLE APARTMENT – OVER 1,100 SQ FT

Hackney | 020 8986 4216 | hackney@winkworth.co.uk

Tenant Fees Apply: Details of fees for tenant referencing, tenancy agreement admin fees and renewal fees are available on the Winkworth website and the link can be found with the displayed rent for the property. Tenants should ensure they are fully conversant with these upfront fees and other costs that are involved at the outset of the tenancy before making an offer to rent and your local Winkworth office will provide written details upon request.

[winkworth.co.uk](https://www.winkworth.co.uk)

Winkworth

See things differently



DESCRIPTION:

Set within a charming former school conversion, this impressive loft-style apartment offers over 1,100 sq ft of living space, complete with a private patio. Perfectly located just moments from Homerton Station and the vibrant amenities of Chatsworth Road, it combines character with convenience.

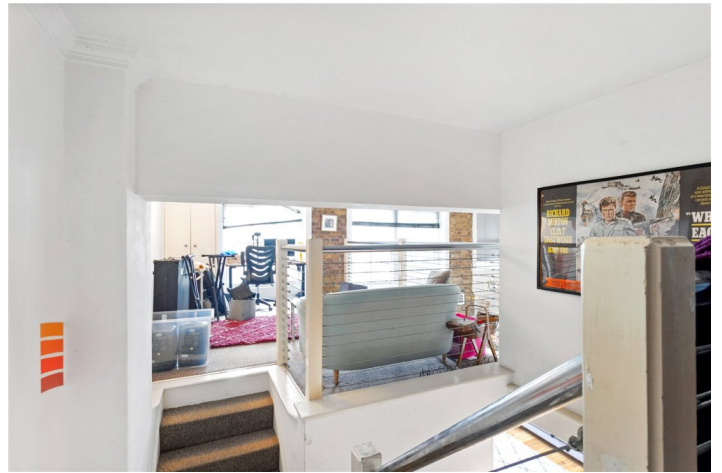
Arranged across two floors, the property features:

Two well-proportioned bedrooms

A dedicated office area

A generous open-plan dining and entertaining space

Winkworth



Winkworth



This floorplan is for illustration purposes only and is not to scale. The position and size of doors, windows, appliances and other features are approximate.

Hackney | 020 8986 4216 | hackney@winkworth.co.uk



[winkworth.co.uk](https://www.winkworth.co.uk)

See things differently

Winkworth wishes to inform prospective buyers and tenants that these particulars are a guide and act as information only. All our details are given in good faith and believed to be correct at the time of printing but they don't form part of an offer or contract. No Winkworth employee has authority to make or give any representation or warranty in relation to this property. All fixtures and fittings, whether fitted or not are deemed removable by the vendor unless stated otherwise and room sizes are measured between internal wall surfaces, including furnishings.