



Winkworth

for every step...

Thornton Road, Berkshire, RG30 1JY

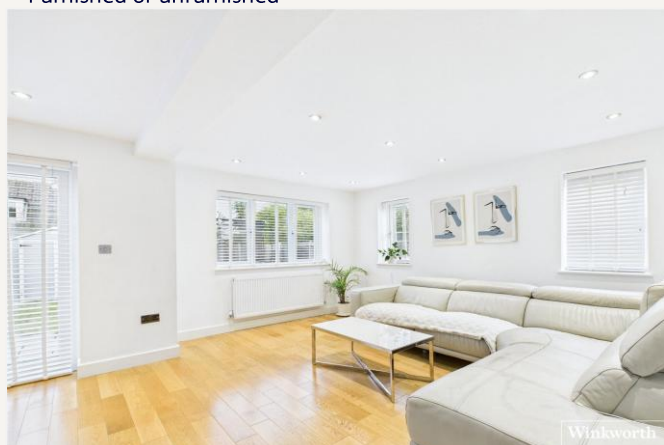
£1,950 per month *Furnished, Unfurnished*

3  1  2 

Three bedroom detached house built in 2019 offering easy access to Reading Town Centre as well as local amenities and transport links. The property comprises living room, kitchen/diner and cloakroom on the ground floor. Three bedrooms, en suite shower room to the master bedroom and a three piece bathroom occupy the first floor. Additional benefits include off road parking and private rear garden with side access. Available now. Furnished or unfurnished.

KEY FEATURES

- Three bedroom detached house
- Good links to Reading town centre
- Two bathrooms
- Council tax band D
- Off road parking
- Available now
- Furnished or unfurnished



Reading

0118 4022 300 | reading@winkworth.co.uk

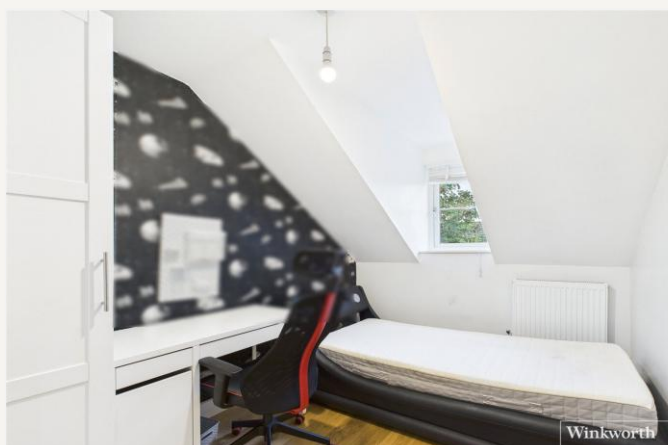
Winkworth

for every step...



*Awaiting EPC.





MATERIAL INFO

Deposit: £2,250.00

Holding Deposit: £450.00

Council Tax Band: D



Ground Floor

Approximate total area⁽⁷⁾84.4 m²909 ft²

Reduced headroom

2.4 m²26 ft²

Reduced headroom

..... Below 1.5 m/5 ft

Calculations reference the RICS IPMS 3C standard. Measurements are approximate and not to scale. This floor plan is intended for illustration only.

GIRAFFE 360

<https://www.winkworth.co.uk/rent/property/REA250426>

Where no figures are shown, we have been unable to ascertain the information. All figures that are shown were correct at the time of printing.

Reading

0118 4022 300 | reading@winkworth.co.uk

Winkworth

for every step...

Winkworth wishes to inform prospective buyers and tenants that these particulars are a guide and act as information only. All our details are given in good faith and believed to be correct at the time of printing but they don't form part of an offer or contract. No Winkworth employee has authority to make or give any representation or warranty in relation to this property. All fixtures and fittings, whether fitted or not are deemed removable by the vendor unless stated otherwise and room sizes are measured between internal wall surfaces, including furnishings.