



CHURCHILL GARDENS, SW1V

£665,000

LEASEHOLD

At a glance...

- Three Bedrooms
- Large Balcony
- Super Presentation
- Parquet Flooring
- Split-Level
- Council Tax Band: D

Winkworth

for every step...



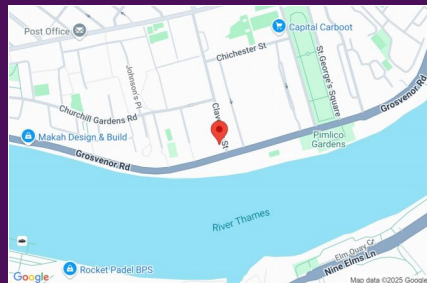
Score	Energy rating	Current	Potential
92+	A		
81-91	B		
69-80	C		
55-68	D	58 D	66 D
39-54	E		
21-38	F		
1-20	G		

CHURCHILL GARDENS, SW1V

£665,000

LEASEHOLD

Stunningly bright and modern upper floor apartment boasting three bedrooms, located in a sought-after area with convenient lift access. This stylish property offers a contemporary living space with a touch of elegance. The spacious balcony provides a perfect spot for entertaining, offering beautiful views towards the river. The apartment is thoughtfully designed and meticulously maintained, featuring high-quality finishes throughout. The open-plan layout creates a seamless flow between the living, dining, and kitchen areas, ideal for modern living. With its prime location and desirable features, this property is perfect for those seeking a sophisticated and comfortable home.

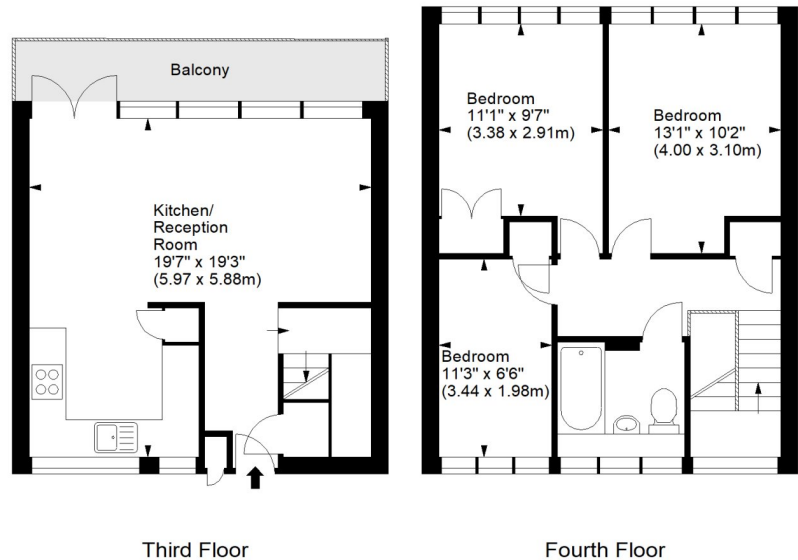


winkworth wishes to inform prospective buyers and tenants that these particulars are a guide and act as information only. All our details are given in good faith and believed to be correct at the time of printing but they don't form part of an offer or contract. No winkworth employee has authority to make or give any representation or warranty in relation to this property. All fixtures and fittings, whether fitted or not are deemed removable by the vendor unless stated otherwise and room sizes are measured between internal wall surfaces - including fireplaces.

Hungerford House, SW1



Approx. Gross Internal Area 873 Sq Ft - 81.10 Sq M



For illustration purposes only. Not to scale.
All measurements are taken and shown at floor level.
www.r3photography.co.uk © Photography / Floor Plans / Lease Plans / EPCs



Pimlico & Westminster

020 7828 1786

pimlico@winkworth.co.uk

winkworth.co.uk/pimlico-westminster

Winkworth

for every step...