



8 Spencer House Limes Park Basingstoke RG24 9WP

Description

This modern two bedroom apartment is light, bright and airy with plenty of space and the great advantage of having two allocated parking spaces.

It is situated within the sought after 'Limes Park' area on the north-western side of town and is handy for ease of access onto the ring road and to the North Hampshire Hospital.

Both bedrooms are 'doubles' and the modern kitchen area includes a number of appliances.



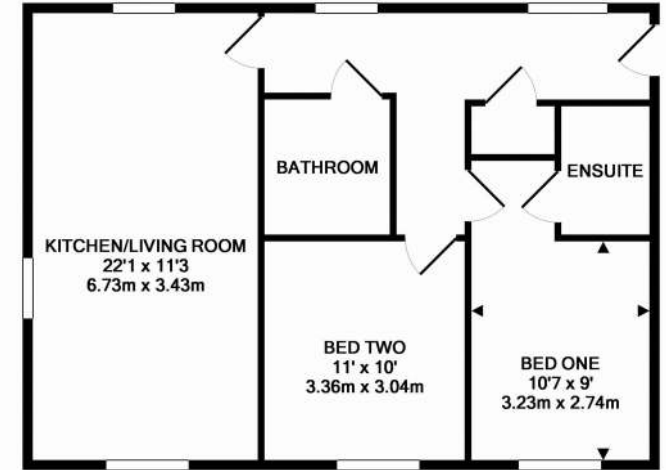
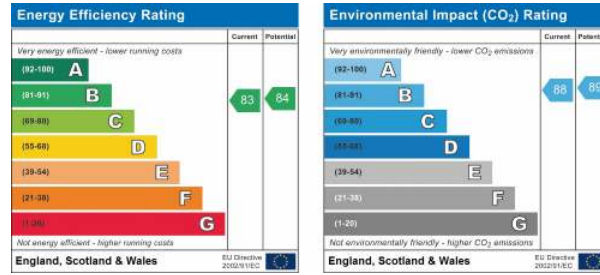
Winkworth

Accommodation

Two double bedrooms
 En-suite shower room
 Bathroom
 Kitchen/living room
 Two parking spaces

Agents Note – a personal interest is declared in that the vendor is related to staff of Winkworth.

Under the Property Misdescriptions Act 1991, these Particulars are a guide and act as information only. All details are given in good faith and are believed to be correct at time of printing. Winkworth give no representation as to their accuracy and potential purchasers or tenants must satisfy themselves by inspection or otherwise as to their correctness. No employee of Winkworth has authority to make or give any representation or warranty in relation to this property.



TOTAL APPROX. FLOOR AREA 667 SQ.FT. (62.0 SQ.M.)

Whilst every attempt has been made to ensure the accuracy of the floor plan contained here, measurements of doors, windows, rooms and any other items are approximate and no responsibility is taken for any error, omission, or mis-statement. This plan is for illustrative purposes only and should be used as such by any prospective purchaser. The services, systems and appliances shown have not been tested and no guarantee as to their operability or efficiency can be given
 Made with Metropix ©2018



Basingstoke Office

10B Church Street, Basingstoke, Hampshire, RG21 7QE

01256 811730 | basingstoke@winkworth.co.uk

winkworth.co.uk/Basingstoke



See things differently.