



ENNISMORE GARDENS, KNIGHTSBRIDGE, LONDON, SW7  
**£1,107 PER WEEK FURNISHED**

## A LARGE AND BRIGHT MAISONETTE SITUATED IN A HIGHLY DESIRABLE LOCATION CLOSE TO HYDE PARK

### DESCRIPTION:

A large and bright maisonette situated on the fourth and fifth floor (no lift) of a period building in a highly desirable location in the heart of Knightsbridge and only a few minutes walk from Hyde Park. The property benefits from wood flooring throughout, a large master bedroom with adjacent bathroom, two further bedrooms with en-suite bathrooms and a balcony with amazing views.

### AT A GLANCE

- Three Bedroom Maisonette
- Reception Room
- Two Balconies
- Prestige Location
- Wood Floors

Knightsbridge & Chelsea | 0207 589 6616 | [knightsbridge@winkworth.co.uk](mailto:knightsbridge@winkworth.co.uk)

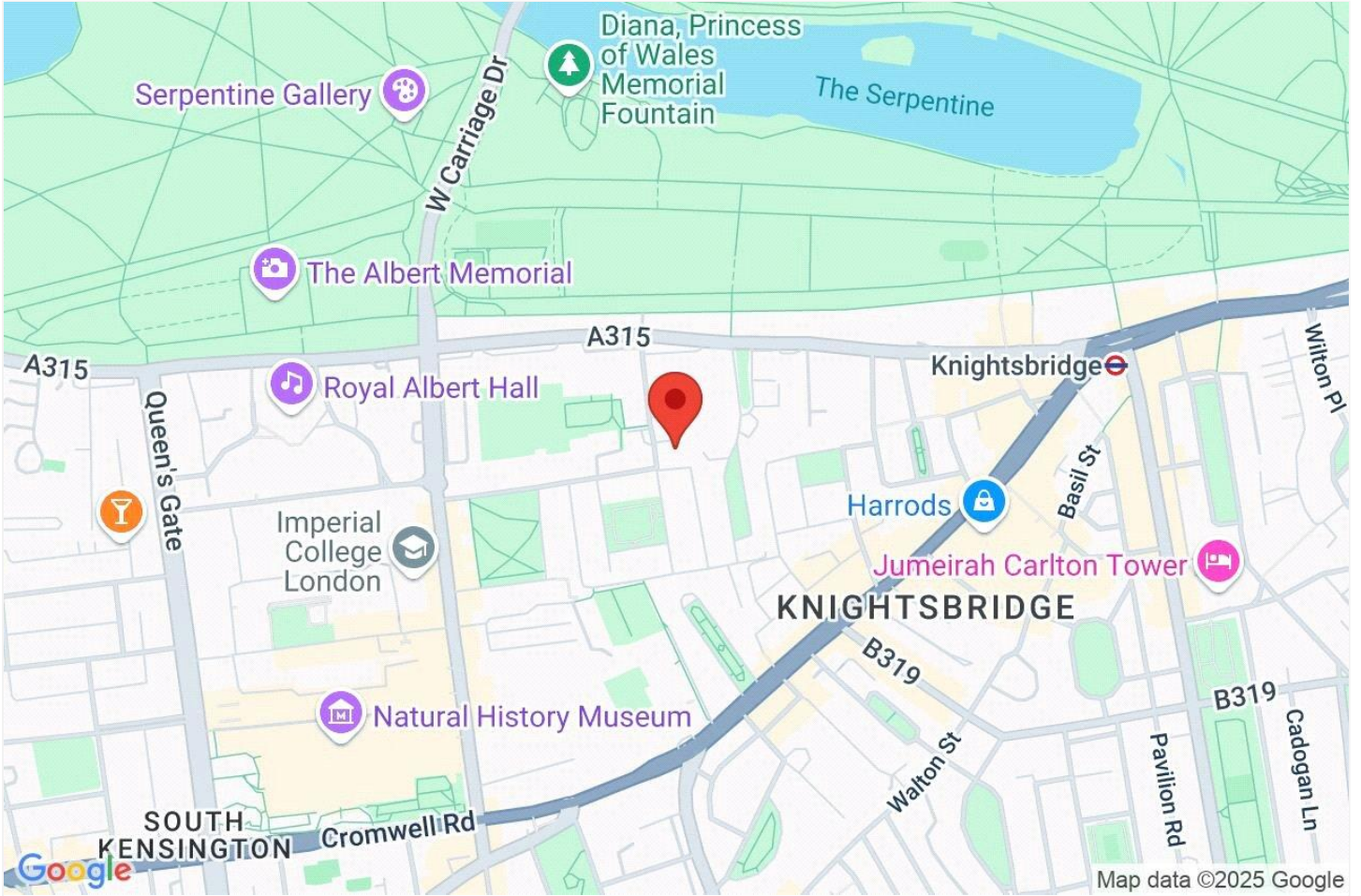
**Winkworth**

for every step...

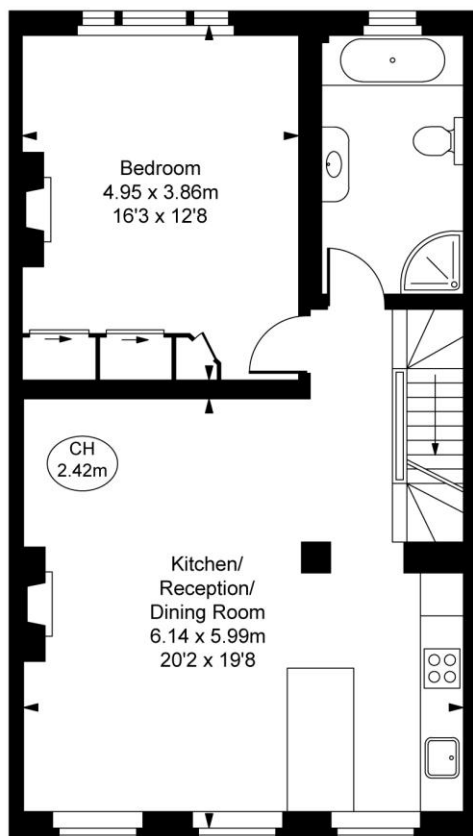




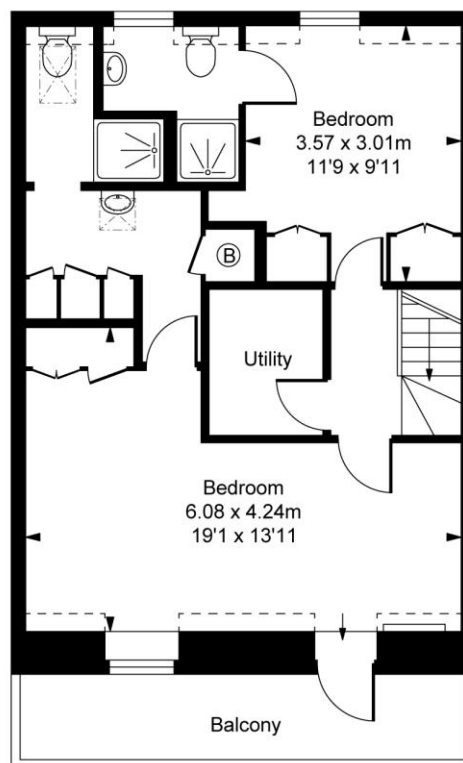




( CH = Ceiling Heights )




Third Floor  
Approximate Gross Internal Area  
67.89 sq m / 731 sq ft



Fourth Floor  
Approximate Gross Internal Area  
51.69 sq m / 556 sq ft

This plan is not to scale. It is for guidance and not for valuation purposes.  
All measurements and areas are approximate only, and have been prepared in accordance with the current edition of the RICS Code of Measuring Practice.  
© Fulham Performance

Energy Efficiency Rating		Current	Potential
Very energy efficient - lower running costs			
(95-100)	A		
(81-91)	B		
(69-80)	C		79
(55-68)	D	60	
(39-54)	E		
(21-38)	F		
(1-10)	G		
Not energy efficient - higher running costs			
England, Scotland & Wales		EU Directive Minimum 2018	

# Winkworth

winkworth.co.uk

Winkworth wishes to inform prospective buyers and tenants that these particulars are a guide and act as information only. All our details are given in good faith and believed to be correct at the time of printing but they don't form part of an offer or contract. No Winkworth employee has authority to make or give any representation or warranty in relation to this property. All fixtures and fittings, whether fitted or not are deemed removable by the vendor unless stated otherwise and room sizes are measured between internal wall surfaces, including furnishings.