



DARTMOUTH ROAD, WILLESSEN GREEN, LONDON, NW2

**£2,850 PER MONTH FURNISHED**

**NEWLY DECORATED TOP FLOOR APARTMENT  
WITH THREE LARGE DOUBLE BEDROOMS  
LOCATED MOMENTS FROM WILLESSEN GREEN  
UNDERGROUND STATION.**

Kensal & Queens Park | 0208 960 4947 | [kensalrise@winkworth.co.uk](mailto:kensalrise@winkworth.co.uk)

**Winkworth**

for every step...

[winkworth.co.uk](http://winkworth.co.uk)





## DESCRIPTION:

AVAILABLE NOW and LICENCED FOR 3 PROFESSIONAL SHARERS.

This Incredibly large and bright top floor apartment is located moments from Willesden Green tube station and situated in the desirable Mapesbury area.

This newly decorated and re-carpeted apartment comprises of three large double bedroom, tiled bathroom, separate kitchen and spacious living room.

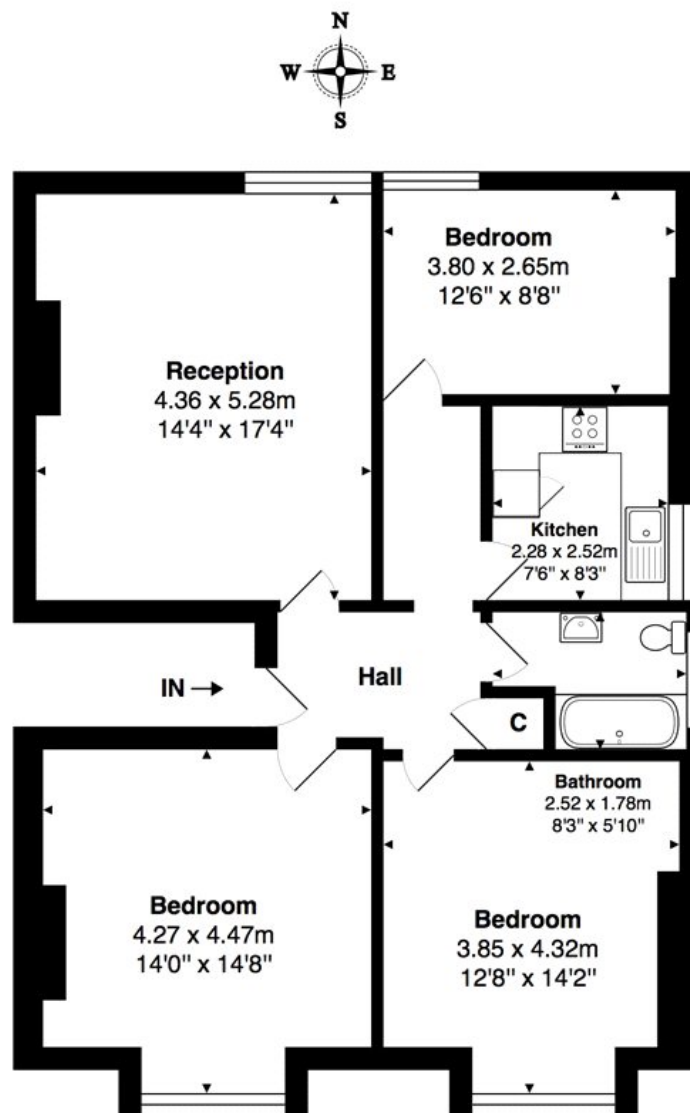
## AT A GLANCE

- New Carpets
- Newly Decorated
- Three Double Bedrooms
- Moments From Willesden Green Underground Station
- Furnished
- Perfect For Three Sharers - HMO Licenced







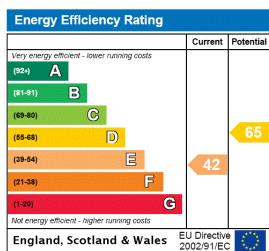


**2nd Floor**

**Total Area: 88.4 m<sup>2</sup> ... 951 ft<sup>2</sup>**

All measurements are approximate and for display purposes only

This floorplan is for illustration purposes only and is not to scale. The position and size of doors, windows, appliances and other features are approximate.



Kensal & Queens Park | 0208 960 4947 | kensalrise@winkworth.co.uk

**Winkworth**

for every step...

[winkworth.co.uk](http://winkworth.co.uk)

winkworth wishes to inform prospective buyers and tenants that these particulars are a guide and act as information only. All our details are given in good faith and believed to be correct at the time of printing but they don't form part of an offer or contract. No winkworth employee has authority to make or give any representation or warranty in relation to this property. All fixtures and fittings, whether fitted or not are deemed removable by the vendor unless stated otherwise and room sizes are measured between internal wall surfaces, including furnishings.