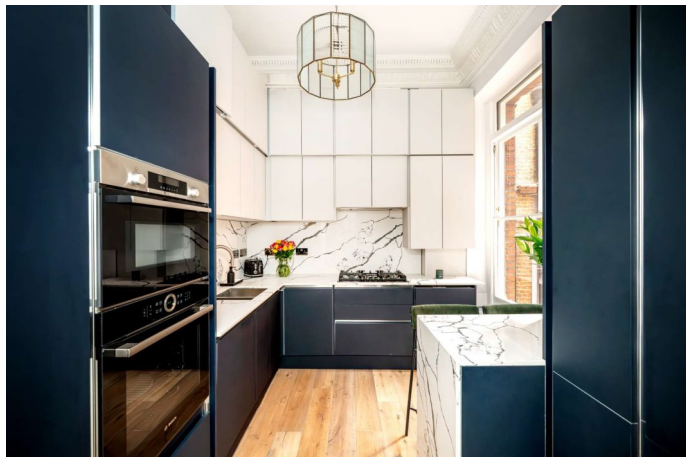




ROSARY GARDENS, SW7
£11,995 PER MONTH FURNISHED, PART FURNISHED, UNFURNISHED

Winkworth



ROSARY GARDENS, SW7

An exquisite, recently refurbished three-bedroom apartment offering luxurious lateral living, with its own private street entrance and sole access to a beautifully landscaped private garden. Occupying the entire ground floor of a grand red-brick corner conversion at the junction of Wetherby Place and Rosary Gardens, this outstanding home extends to approximately 1,698 sq ft (158 sq m) of impeccably finished and generously proportioned accommodation.

Designed with an exceptional level of detail, the apartment seamlessly blends period elegance with cutting-edge contemporary features. A wide and welcoming entrance hall leads to two magnificent reception rooms, both with soaring ceilings, ornate detailing, and integrated Sonos speakers—perfect for stylish entertaining or relaxed everyday living.

The property comprises three generous double bedrooms, each benefitting from integrated air conditioning, bespoke fitted wardrobes, and large windows that flood the rooms with natural light. Throughout the flat, there is an abundance of cleverly designed storage, including bespoke cabinetry and built-in solutions, ensuring both practicality and elegance.

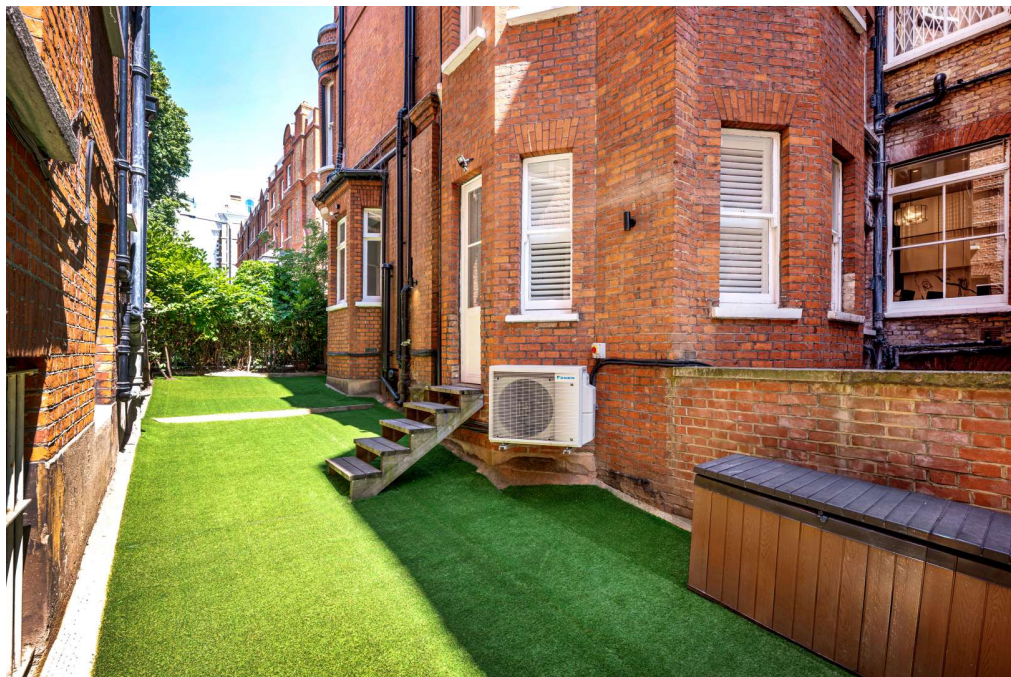
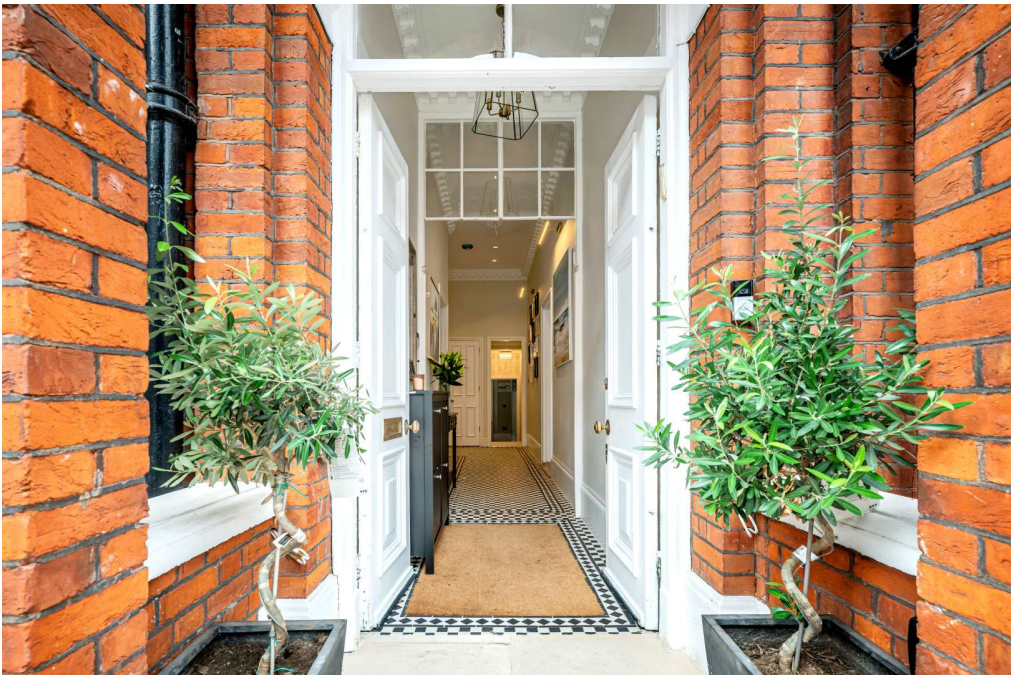
The principal bedroom features a sleek en-suite bathroom, while the additional bedrooms are served by a beautifully appointed family bathroom. Both bathrooms enjoy luxurious finishes and the added comfort of underfloor heating.

The bespoke kitchen is as functional as it is striking—equipped with premium integrated appliances, a Quooker boiling water tap, underfloor heating, and sleek modern cabinetry offering extensive storage options.

One of the home's standout features is its beautifully landscaped private garden, accessed directly from the flat and ideal for al fresco dining, entertaining, or peaceful moments outdoors.

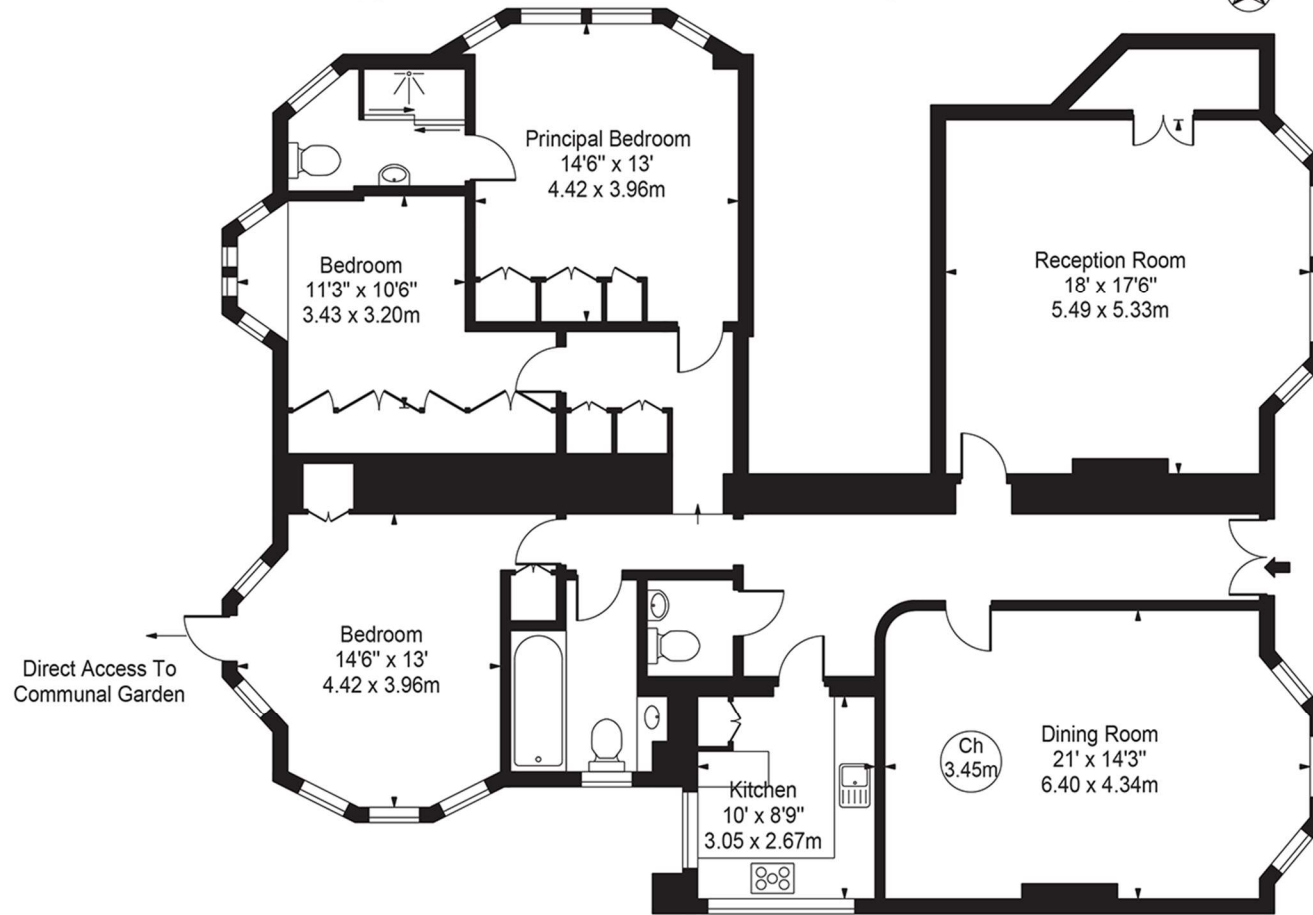
Rosary Gardens is a highly sought-after and tranquil street in the heart of South Kensington, just moments from the boutiques, restaurants, and cafés of Gloucester Road. Excellent transport connections are close by, with access to the Circle, District, and Piccadilly lines.

A truly exceptional opportunity to rent a high-specification, beautifully finished residence with abundant storage, private garden access, and refined design in one of London's most prestigious neighbourhoods.



Rosary Gardens

Approx. Gross Internal Area 1698 Sq Ft - 157.74 Sq M



Upper Ground Floor

For Illustration Purposes Only - Not To Scale

This floor plan should be used as a general outline for guidance only and does not constitute in whole or in part an offer or contract. Any intending purchaser or lessee should satisfy themselves by inspection, searches, enquiries and full survey as to the correctness of each statement. Any areas, measurements or distances quoted are approximate and should not be used to value a property or be the basis of any sale or let.

Copyright Morriarti Photography & Design LTD

Score	Energy rating	Current	Potential
92+	A		
81-91	B		
69-80	C	79 C	82 B
55-68	D		
39-54	E		
21-38	F		
1-20	G		

North Kensington | 020 7792 5000 | northkensington@winkworth.co.uk

winkworth.co.uk

Winkworth wishes to inform prospective buyers and tenants that these particulars are a guide and act as information only. All our details are given in good faith and believed to be correct at the time of printing but they don't form part of an offer or contract. No Winkworth employee has authority to make or give any representation or warranty in relation to this property. All fixtures and fittings, whether fitted or not are deemed removable by the vendor unless stated otherwise and room sizes are measured between internal wall surfaces, including furnishings.

Winkworth